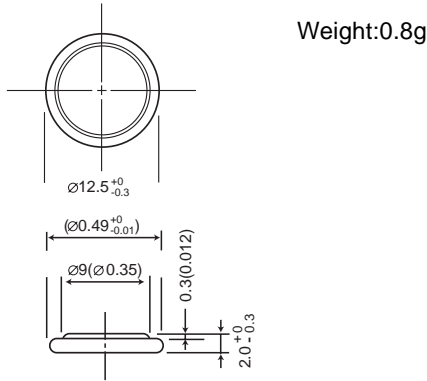


Vanadium Pentoxide Lithium Coin Batteries (VL Series): Individual Specifications

VL1220

Dimensions(mm)

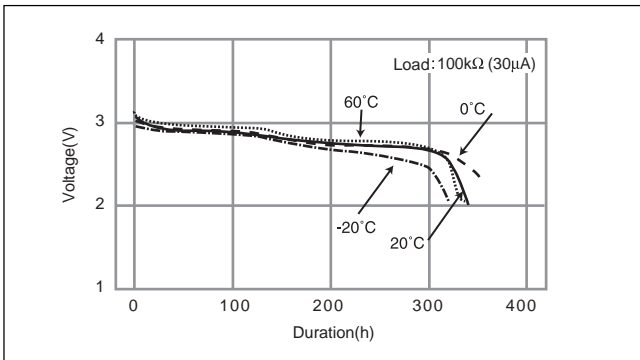


Note: This bare cell diagram is for size reference only. Please refer to the tab configurations at the end of this section for available tabs.

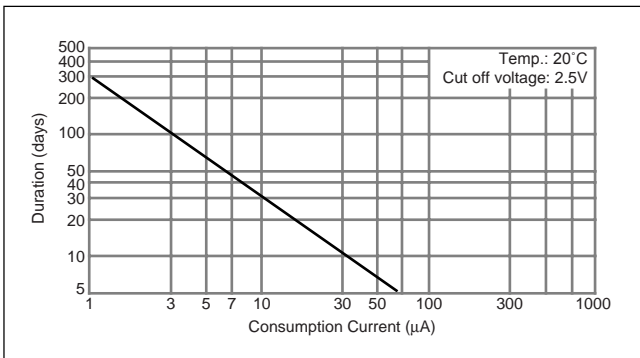
Specification

Nominal voltage (V)	3
Nominal capacity (mAh)	7.0
Continuous standard load (mA)	0.03
Operating temperature (C)	-20 ~ +60

Discharge Temperature Characteristics

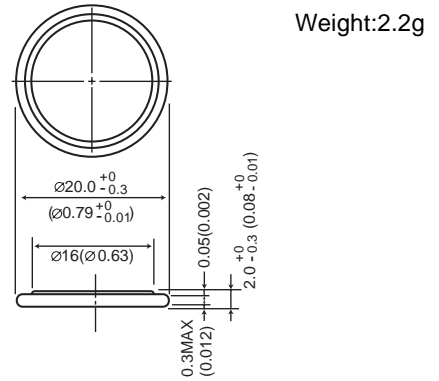


Consumption current vs. Duration time



VL2020

Dimensions(mm)

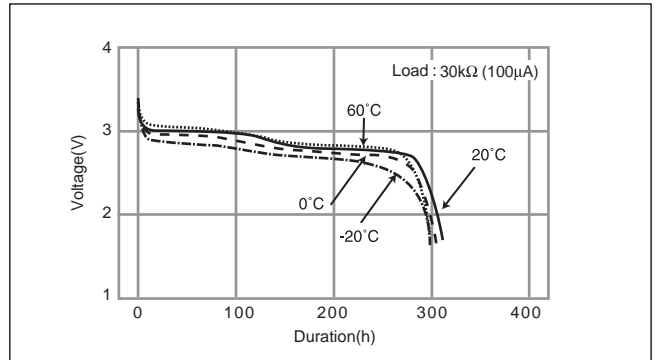


Note: This bare cell diagram is for size reference only. Please refer to the tab configurations at the end of this section for available tabs.

Specification

Nominal voltage (V)	3
Nominal capacity (mAh)	20.0
Continuous standard load (mA)	0.07
Operating temperature (C)	-20 ~ +60

Discharge Temperature Characteristics



Consumption current vs. Duration time

