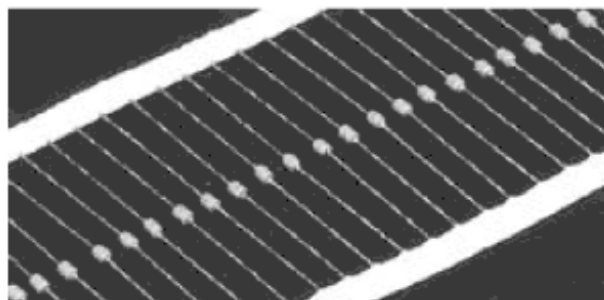


# Конденсаторы

## Керамические - Аксиальные

### FEATURES

- + Wide capacitance, TC, voltage and tolerance range
- + Industry standard sizes
- + Tape and Reel available for auto placement



### HOW TO ORDER

CC42	104	Z	17	CG	500	F
CC42: 1	Nominal Capacitance	Tolerance	Max Component length (inches)	Dielectric	Rated Voltage	Packaging Style
Class I axial leads MLC	104 10 x 10 <sup>4</sup>	B ±0.10PF	17 0.17	CG COG(NPO)	160 16 x 10 <sup>0</sup>	Tape & Reel P Ammo
CT42: 2	5R0 5.0	C ±0.25PF	20 0.20	B X7R	250 25 x 10 <sup>0</sup>	T Reel
Class II axial leads MLC		D ±0.5PF		F Y5V	500 50 x 10 <sup>0</sup>	Pitch (mm)
		F ±1.0%		E Z5U	630 63 x 10 <sup>0</sup>	F <sub>2</sub> 5.08
		G ±2.0%			101 10 x 10 <sup>1</sup>	F <sub>3</sub> 7.5
		J ±5.0%				F <sub>4</sub> 10
		K ±10%				
		M ±20%				
		S +50-20%				
		Z +80-20%				
		P ±100%				

### SIZE CODE CAPACITANCE AND VOLTAGE

Size Code	Dimensions: (mm)						Voltage	Capacitance (PF)		
	Lmax	Dmax	A±1.5	F±0.6	D	COG(NPO)		X7R(B)	Y5V(Z5U)	
17	4.3	2.5	62	5.08	10.0	0.5	25V 50V 100V	1.0 ~ 102 1.0 ~ 102 1.0 ~ 102	331 ~ 333 331 ~ 333 331 ~ 333	103 ~ 105 103 ~ 105 103 ~ 105
20	5.1	3.0	63	7.50	10.0	0.5	25V 50V 100V	560 ~ 472 560 ~ 472 390 ~ 392	102 ~ 224 102 ~ 104 102 ~ 683	103 ~ 125 103 ~ 105 103 ~ 105

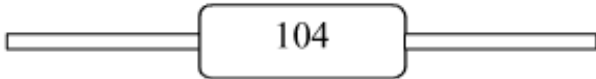
### CONSTRUCTION AND MECHANICAL PERFORMANCES OF COLOR CAPACITANCE

No	Component	Material
1	Lead wire	CP lead or copper lead
2	Cap	Fe (Iron)
3	Element	Multi-layer ceramic
4	External coating	Epoxy-based coating material
5	Color code	Melamine-based ink

# Конденсаторы

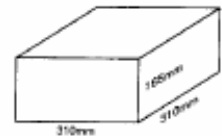
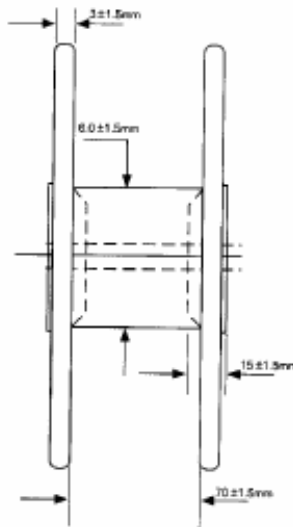
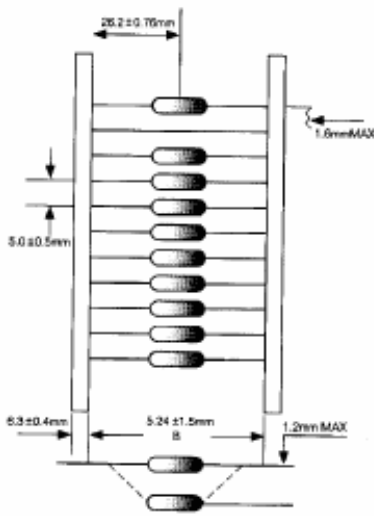
Керамические - Аксиальные

## NOMINAL CAPACITANCE CODE MARKING

	Nominal Capacitance (PF)	
	104	$10 \times 10^4$
	5R0	5.0

## PACKAGING STYLE

Tape and Reel



## Packaging Quantity

Size	Tape and Reel	Ammo Package	Bulk Package
17	5000	5000	1000 , 500
20	5000	5000	1000 , 500

