

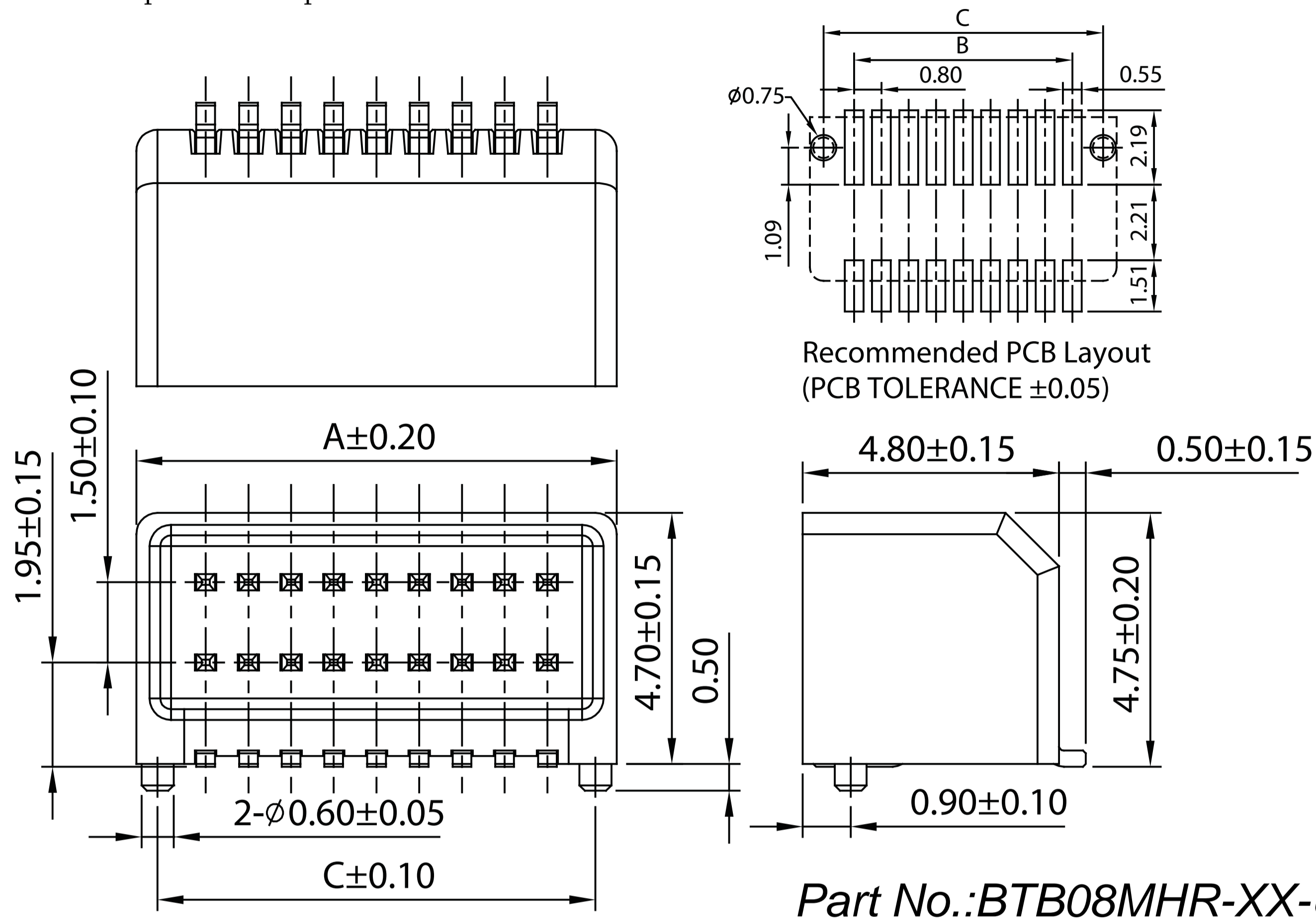
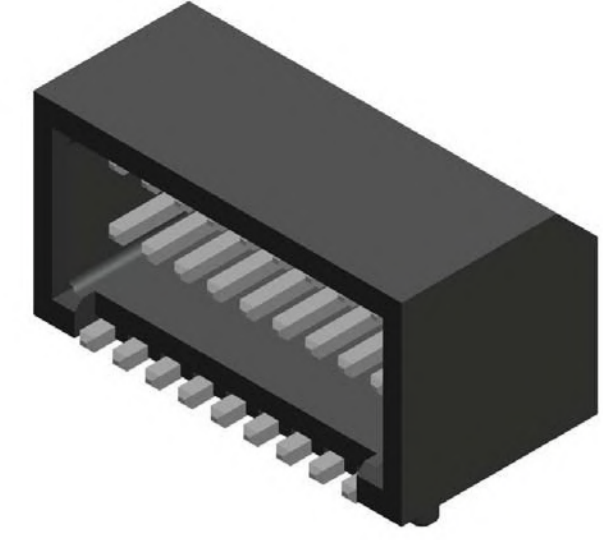
Board To Board Male 0.8mm Right Angle Type

SPECIFICATION

Current Rate:0.5 AMP
 Insulation Resistance:1000MΩ Min.
 Contact Resistance:20mΩ Max.
 Dielectric Voltage:200V AC for one minute
 Operation Temperature:-20°C to +105°C

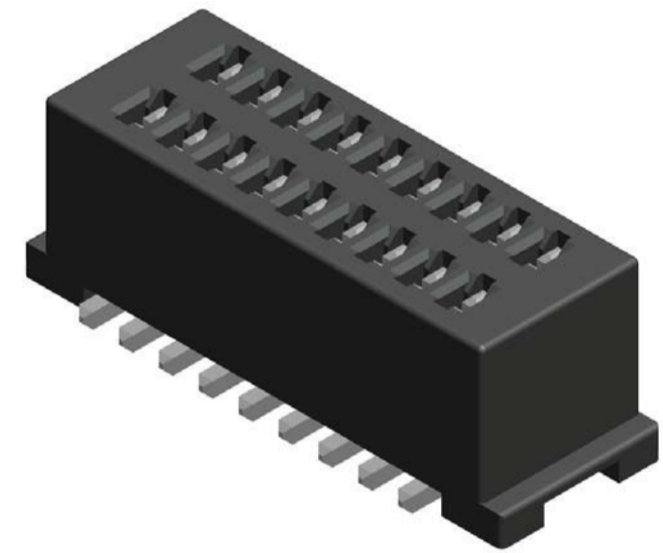
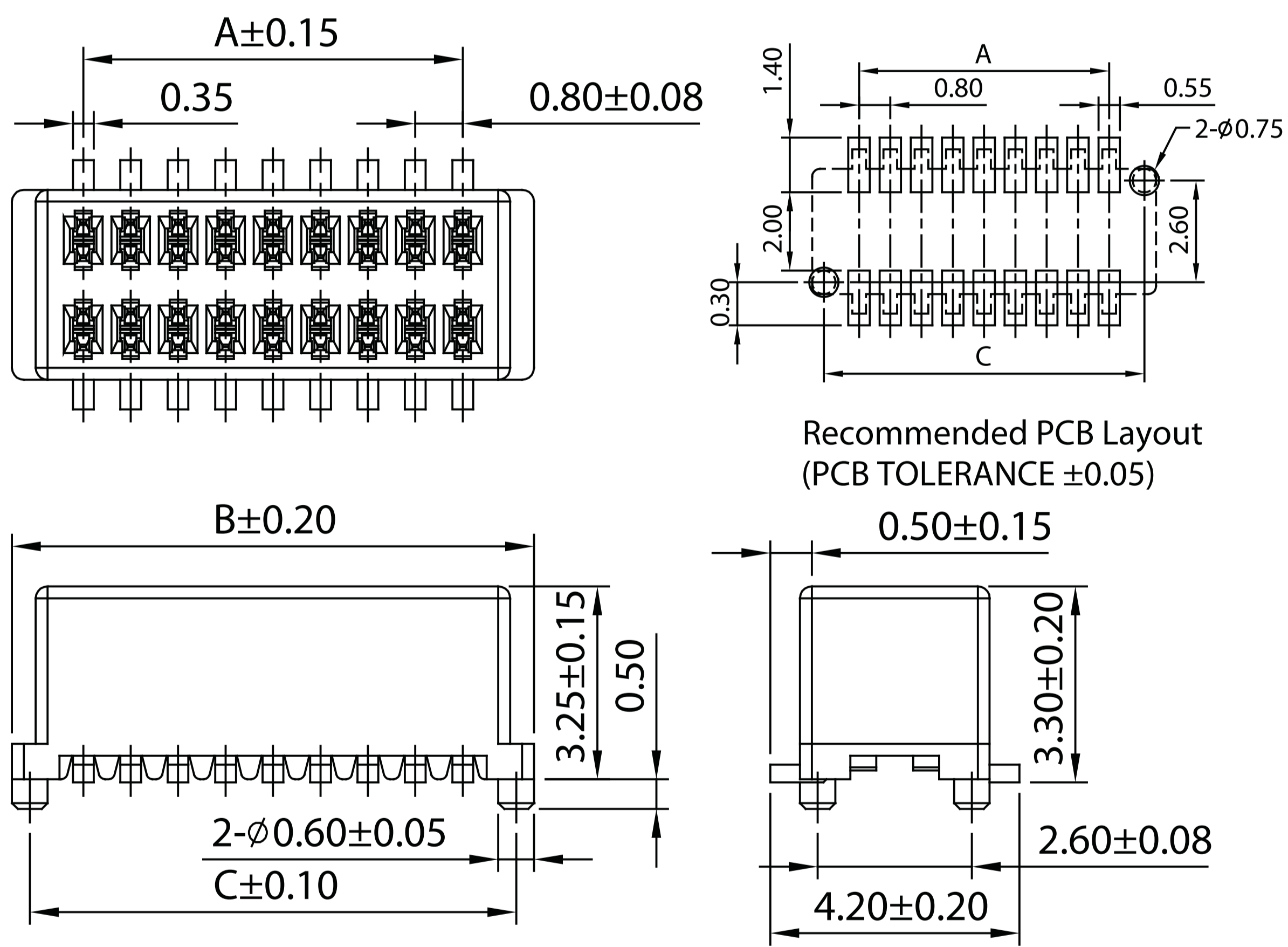
MATERIAL

Insulator:Polyester,UL 94V-0
 Standard:LCP
 Contact Pin:Copper Alloy
 Contact Plating:Nickel In All Area , Au/Tin Over Nickel



No. of Contacts	Dim. A	Dim. B	Dim. C
6	4.20	1.60	3.40
8	5.00	2.40	4.20
10	5.80	3.20	5.00
12	6.60	4.00	5.80
14	7.40	4.80	6.60
16	8.20	5.60	7.40
18	9.00	6.40	8.20
20	9.80	7.20	9.00
22	10.60	8.00	9.80
24	11.40	8.80	10.60
26	12.20	9.60	11.40
28	13.00	10.40	12.20
30	13.80	11.20	13.00
32	14.60	12.00	13.80
34	15.40	12.80	14.60
36	16.20	13.60	15.40

Board To Board Female 0.8mm H=3.3mm



No. of Contacts	Dim. A	Dim. B	Dim. C
6	1.60	4.00	3.40
8	2.40	4.80	4.20
10	3.20	5.60	5.00
12	4.00	6.40	5.80
14	4.80	7.20	6.60
16	5.60	8.00	7.40
18	6.40	8.80	8.20
20	7.20	9.60	9.00
22	8.00	10.40	9.80
24	8.80	11.20	10.60
26	9.60	12.00	11.40
28	10.40	12.80	12.20
30	11.20	13.60	13.00
32	12.00	14.40	13.80
34	12.80	15.20	14.60
36	13.60	16.00	15.40

ORDER INFORMATION

