

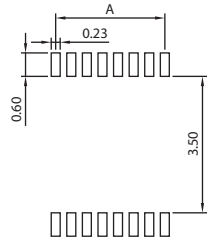
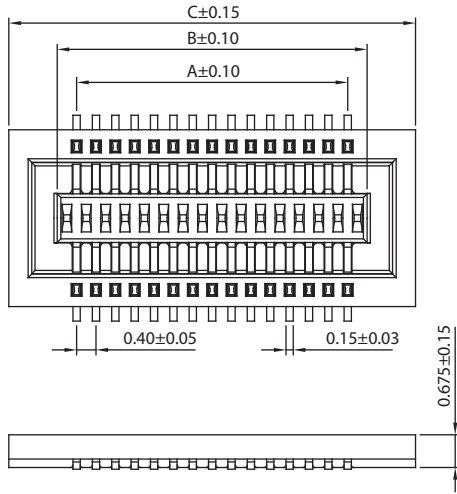
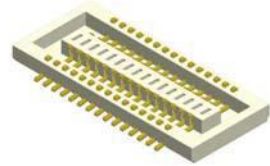
Board To Board Male 0.4mm H=0.675mm

SPECIFICATION

Current Rate:0.3 AMP
 Insulation Resistance:100MΩ Min.
 Contact Resistance:90mΩ Max.
 Dielectric Voltage:50V AC for one minute
 Operation Temperature:-25° C to +85° C

MATERIAL

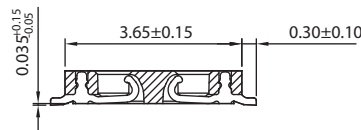
Insulator:Polyester,UL 94V-0
 Standard:LCP
 Contact Pin:Phosphor Bronze
 Contact Plating:Gold Dash all over



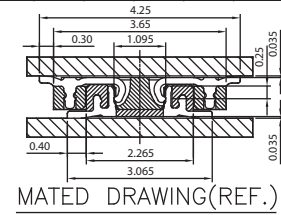
Recommended PCB Layout
(PCB TOLERANCE ±0.05)

After Mating Height

MALE	0.90
FEMALE	0.90

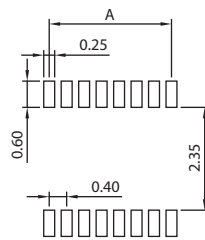
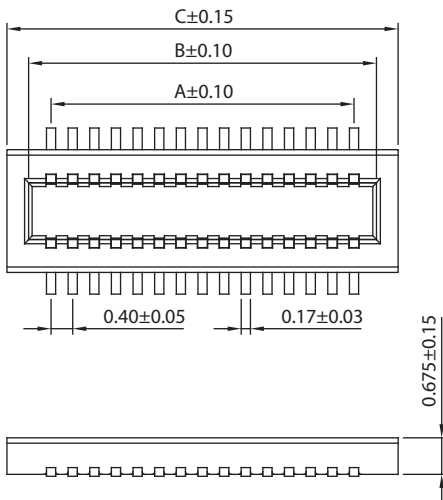


No. of Contacts	Dim. A	Dim. B	Dim. C	No. of Contacts	Dim. A	Dim. B	Dim. C
10	1.60	2.40	4.40	46	8.80	9.60	11.60
12	2.00	2.80	4.80	48	9.20	10.00	12.00
14	2.40	3.20	5.20	50	9.60	10.40	12.40
16	2.80	3.60	5.60	52	10.00	10.80	12.80
18	3.20	4.00	6.00	54	10.40	11.20	13.20
20	3.60	4.40	6.40	56	10.80	11.60	13.60
22	4.00	4.80	6.80	58	11.20	12.00	14.00
24	4.40	5.20	7.20	60	11.60	12.40	14.40
26	4.80	5.60	7.60	62	12.00	12.80	14.80
28	5.20	6.00	8.00	64	12.40	13.20	15.20
30	5.60	6.40	8.40	66	12.80	13.60	15.60
32	6.00	6.80	8.80	68	13.20	14.00	16.00
34	6.40	7.20	9.20	70	13.60	14.40	16.40
36	6.80	7.60	9.60	72	14.00	14.80	16.80
38	7.20	8.00	10.00	74	14.40	15.20	17.20
40	7.60	8.40	10.40	76	14.80	15.60	17.60
42	8.00	8.80	10.80	78	15.20	16.00	18.00
44	8.40	9.20	11.20	80	15.60	16.40	18.40

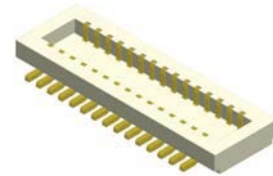
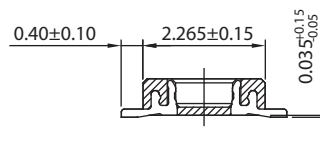


Part No.:BTB04M-XX-U

Board To Board Female 0.4mm H=0.675mm



Recommended PCB Layout
(PCB TOLERANCE ±0.05)



No. of Contacts	Dim. A	Dim. B	Dim. C	No. of Contacts	Dim. A	Dim. B	Dim. C
10	1.60	2.43	3.23	46	8.80	9.63	10.43
12	2.00	2.83	3.63	48	9.20	10.03	10.83
14	2.40	3.23	4.03	50	9.60	10.43	11.23
16	2.80	3.63	4.43	52	10.00	10.83	11.63
18	3.20	4.03	4.83	54	10.40	11.23	12.03
20	3.60	4.43	5.23	56	10.80	11.63	12.43
22	4.00	4.83	5.63	58	11.20	12.03	12.83
24	4.40	5.23	6.03	60	11.60	12.43	13.23
26	4.80	5.63	6.43	62	12.00	12.83	13.63
28	5.20	6.03	6.83	64	12.40	13.23	14.03
30	5.60	6.43	7.23	66	12.80	13.63	14.43
32	6.00	6.83	7.63	68	13.20	14.03	14.83
34	6.40	7.23	8.03	70	13.60	14.43	15.23
36	6.80	7.63	8.43	72	14.00	14.83	15.63
38	7.20	8.03	8.83	74	14.40	15.23	16.03
40	7.60	8.43	9.23	76	14.80	15.63	16.43
42	8.00	8.83	9.63	78	15.20	16.03	16.83
44	8.40	9.23	10.03	80	15.60	16.43	17.23

Part No.:BTB04F-XX-U

ORDER INFORMATION

