

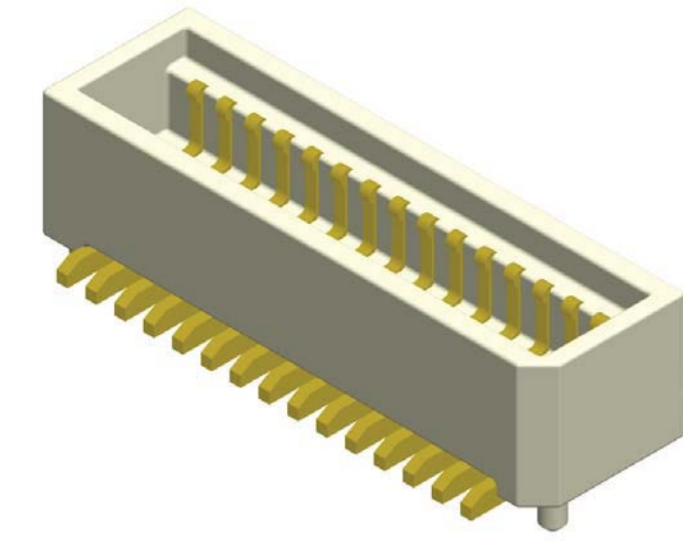
Board To Board Female 0.8mm H=3.65/4.15/5.15/5.65mm

SPECIFICATION

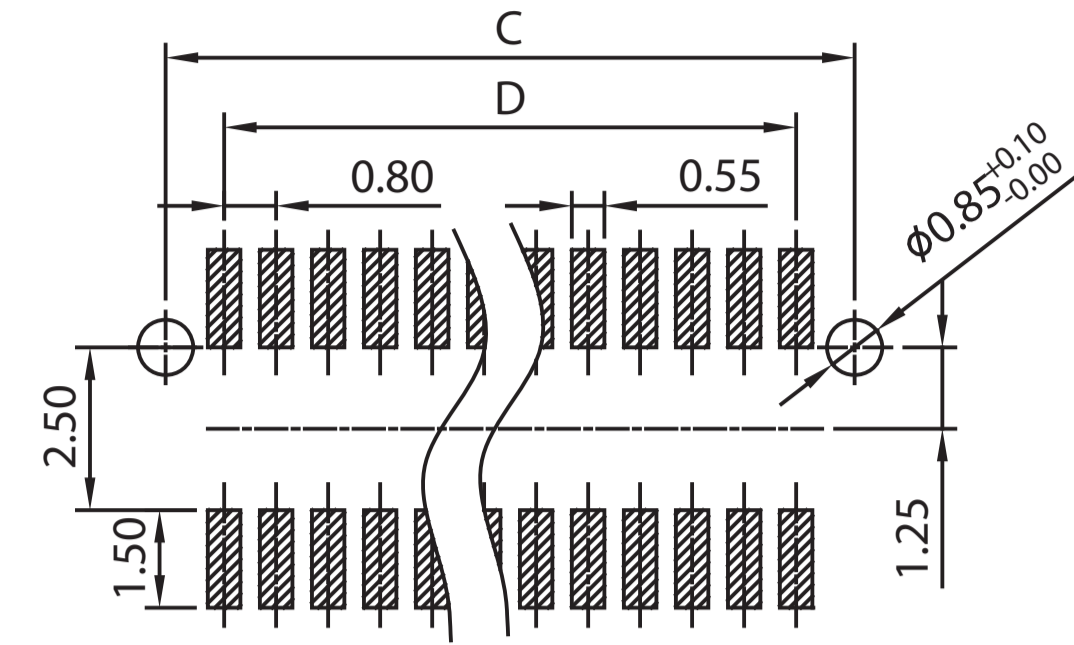
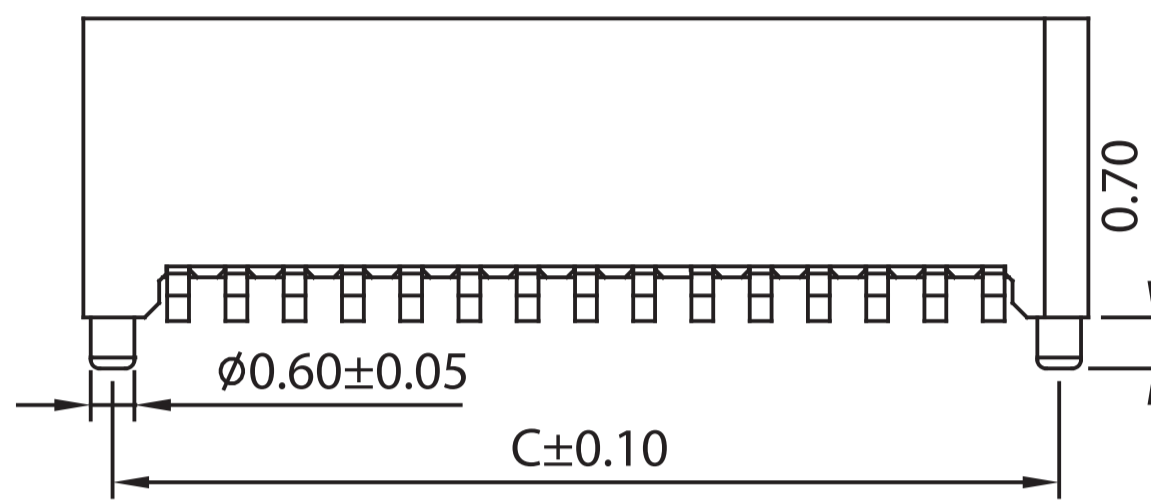
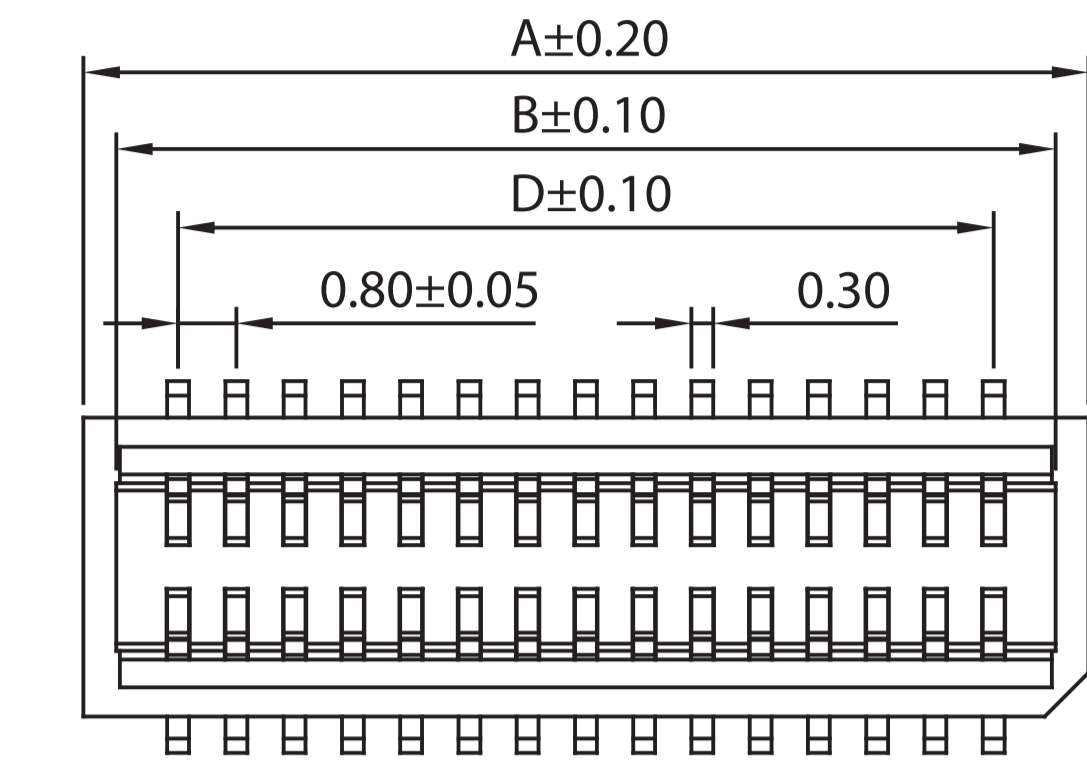
Current Rate:0.5 AMP
 Insulation Resistance:100MΩ Min.
 Contact Resistance:40mΩ Max.
 Dielectric Voltage:500V AC for one minute
 Operation Temperature:-40°C to +105°C

MATERIAL

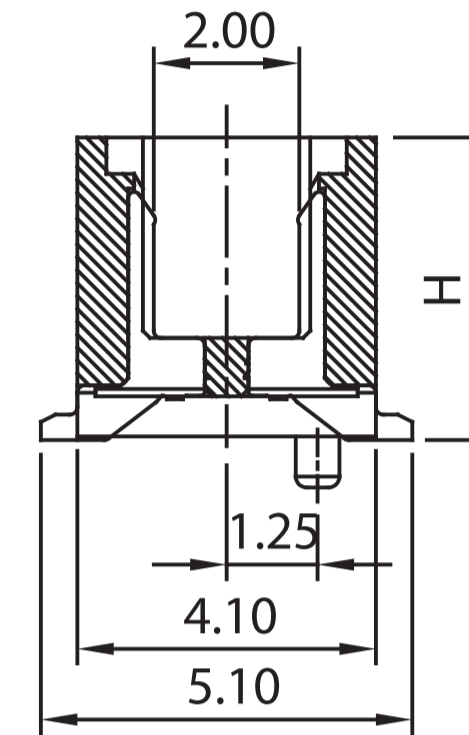
Insulator:Polyester,UL 94V-0
 Standard:Nylon 46
 Contact Pin:Phosphor Bronze
 Contact Plating:Gold Flash all over



No. of Contacts	Dimensions			
	A	B	C	D
10	5.80	4.90	5.00	3.20
12	6.60	5.70	5.80	4.00
14	7.40	6.50	6.60	4.80
16	8.20	7.30	7.40	5.60
18	9.00	8.10	8.20	6.40
20	9.80	8.90	9.00	7.20
22	10.60	9.70	9.80	8.00
24	11.40	10.50	10.60	8.80
26	12.20	11.30	11.40	9.60
28	13.00	12.10	12.20	10.40
30	13.80	12.90	13.00	11.20
32	14.60	13.70	13.80	12.00
34	15.40	14.50	14.60	12.80
36	16.20	15.30	15.40	13.60
38	17.00	16.10	16.20	14.40
40	17.80	16.90	17.00	15.20
50	21.80	20.90	21.00	19.20
60	25.80	24.90	25.00	23.20
68	29.00	28.10	28.20	26.40
70	29.80	28.90	29.00	27.20
80	33.80	32.90	33.00	31.20
90	37.80	36.90	37.00	35.20
100	41.80	40.90	41.00	39.20



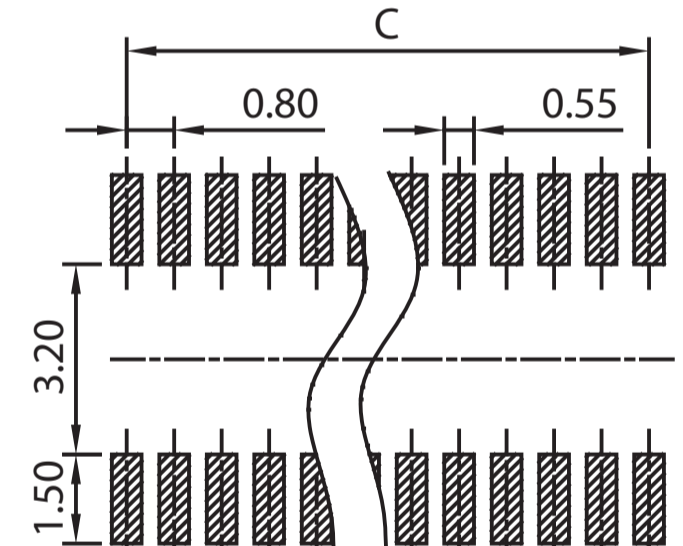
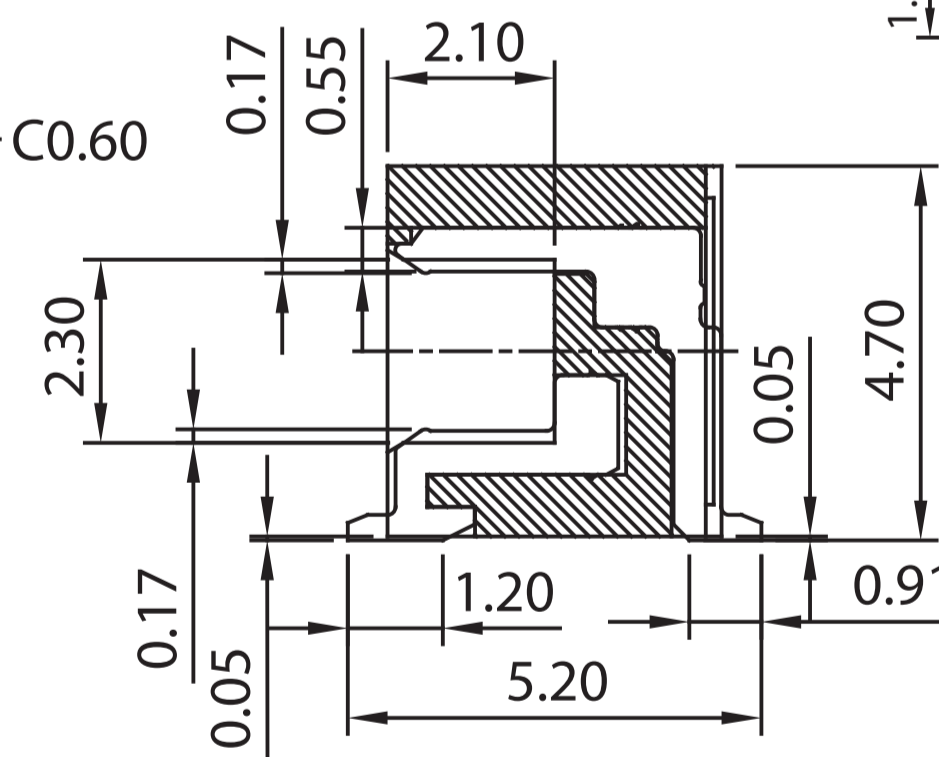
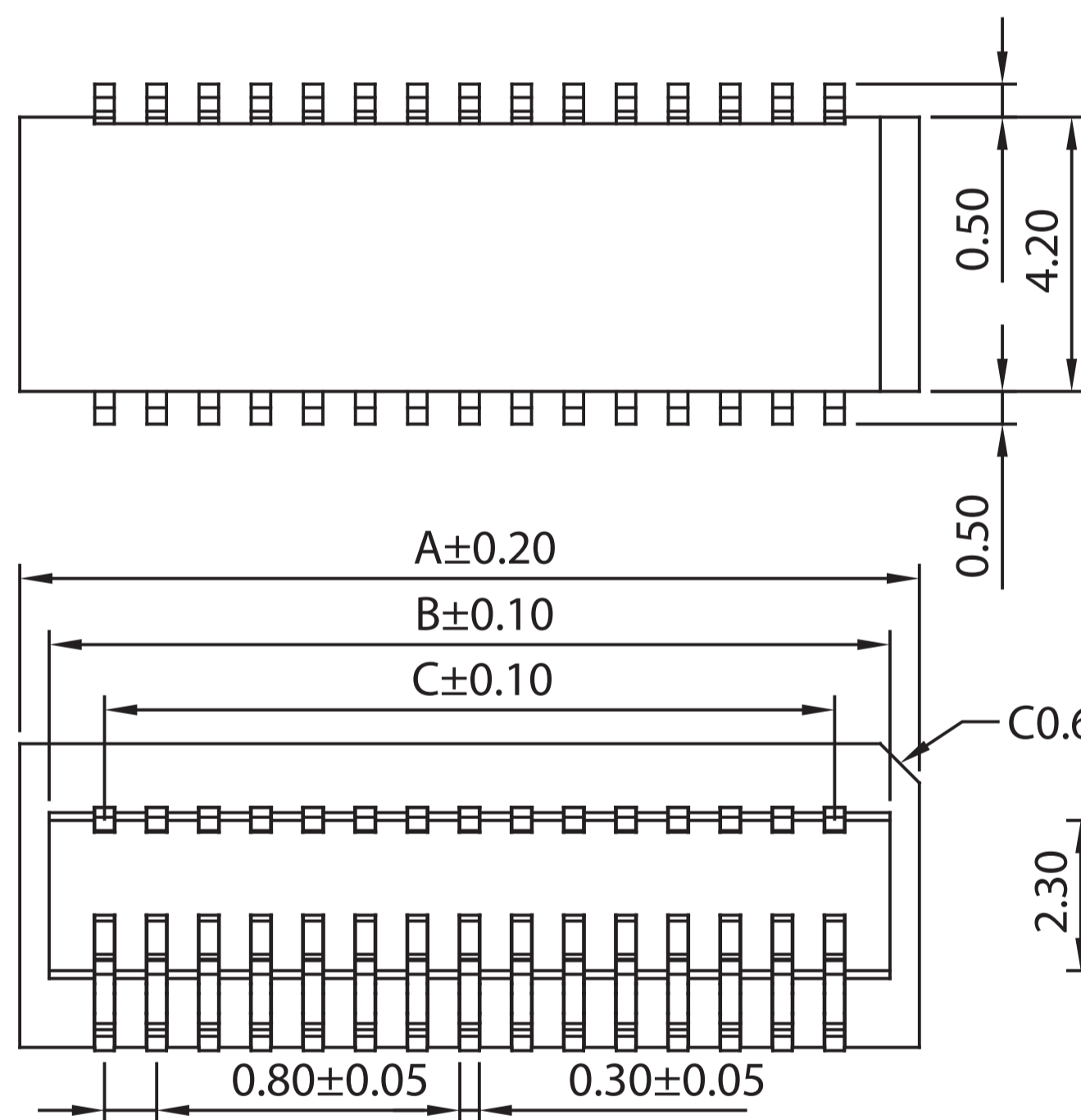
Recommended PCB Layout
(PCB TOLERANCE ±0.05)



Part No.:BTB08FCXX-XX-U

Board To Board Female 0.8mm Right Angle Type

No. of Contacts	Dimensions		
	A	B	D
10	5.80	4.90	3.20
12	6.60	5.70	4.00
14	7.40	6.50	4.80
16	8.20	7.30	5.60
18	9.00	8.10	6.40
20	9.80	8.90	7.20
22	10.60	9.70	8.00
24	11.40	10.50	8.80
26	12.20	11.30	9.60
28	13.00	12.10	10.40
30	13.80	12.90	11.20
32	14.60	13.70	12.00
34	15.40	14.50	12.80
36	16.20	15.30	13.60
38	17.00	16.10	14.40
40	17.80	16.90	15.20
50	21.80	20.90	19.20
60	25.80	24.90	23.20
68	29.00	28.10	26.40
70	29.80	28.90	27.20
80	33.80	32.90	31.20
90	37.80	36.90	35.20
100	41.80	40.90	39.20



Recommended PCB Layout
(PCB TOLERANCE ±0.05)

Part No.:BTB08FBR-XX-U

ORDER INFORMATION

B T B 0 8 F B R

B T B 0 8 F C X X - X X G N X X X - U

Female Insulator Height
37:Insulator Height H=3.65mm
42:Insulator Height H=4.15mm
52:Insulator Height H=5.15mm
57:Insulator Height H=5.65mm

Insulator Height

No. of Contacts (10~100)

G:Gold Flash

N:Nylon Natural

C:With Cap
(option for BTB08FCXX only)

P:With Peg
O:W/O Peg

T:Tube
R:Tape & Reel

U:RoHS + Nylon 46