

# SD188SBWS

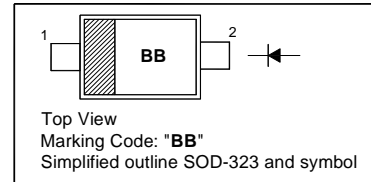
## SILICON SCHOTTKY BARRIER DIODE

### Features

- Small surface mounting type
- Ultra low  $V_F$
- High reliability

### PINNING

PIN	DESCRIPTION
1	Cathode
2	Anode



### Absolute Maximum Ratings ( $T_a = 25\text{ }^\circ\text{C}$ )

Parameter	Symbol	Value	Unit
Peak Reverse Voltage	$V_{RM}$	20	V
Reverse Voltage	$V_R$	10	V
Mean Rectifying Current	$I_O$	200	mA
Peak Forward Surge Current	$I_{FSM}$	0.5	A
Junction Temperature	$T_j$	125	$^\circ\text{C}$
Storage Temperature Range	$T_{stg}$	- 40 to + 125	$^\circ\text{C}$

### Characteristics at $T_a = 25\text{ }^\circ\text{C}$

Parameter	Symbol	Max.	Unit
Forward Voltage at $I_F = 50\text{ mA}$ at $I_F = 200\text{ mA}$	$V_F$	0.3 0.41	V
Reverse Current at $V_R = 10\text{ V}$	$I_R$	20	$\mu\text{A}$

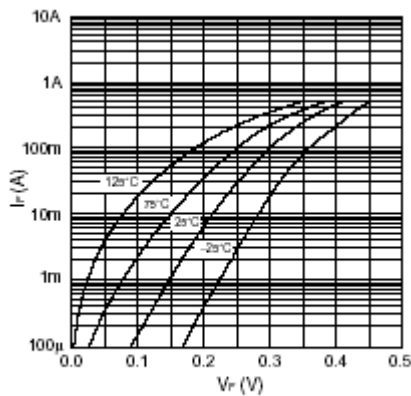


Fig.1 Forward characteristics

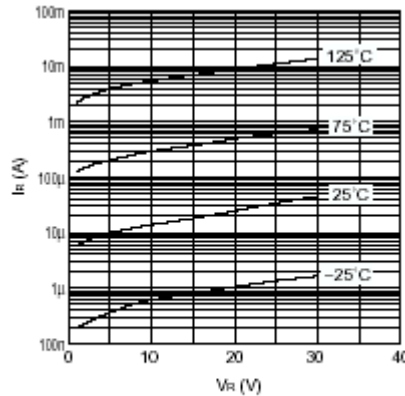


Fig.2 Reverse characteristics

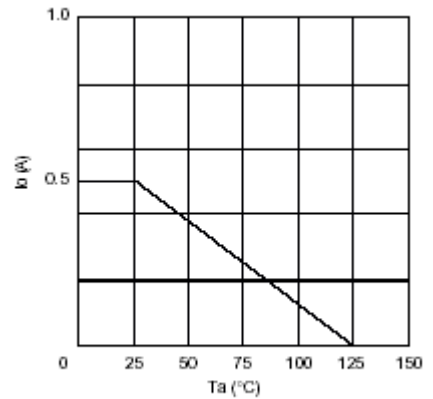
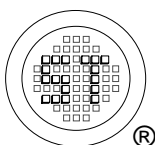


Fig.3 Derating curve



**SEMTECH ELECTRONICS LTD.**  
Subsidiary of Sino-Tech International (BVI) Limited



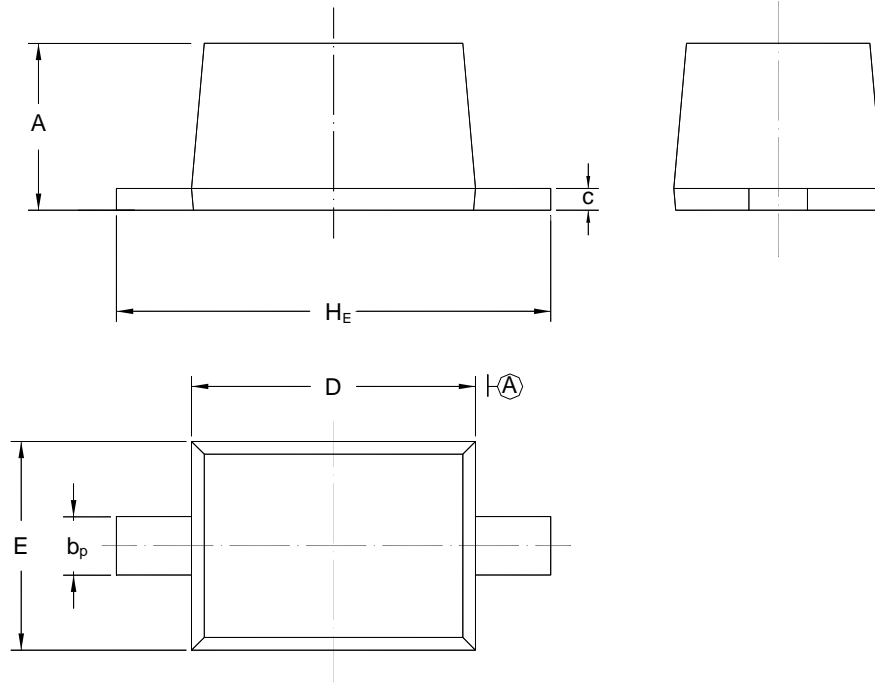
Dated : 01/09/2006

# SD188SBWS

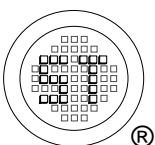
## PACKAGE OUTLINE

Plastic surface mounted package; 2 leads

SOD-323



UNIT	A	$b_p$	C	D	E	$H_E$
mm	1.10 0.80	0.40 0.25	0.15 0.10	1.80 1.60	1.35 1.15	2.80 2.30



**SEMTECH ELECTRONICS LTD.**  
Subsidiary of Sino-Tech International (BVI) Limited



Dated : 01/09/2006