

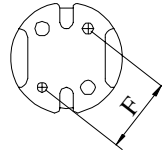
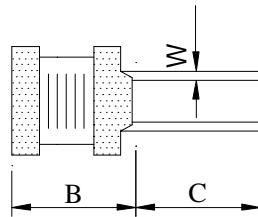
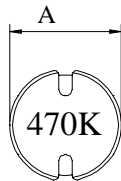
# SPECIFICATION FOR APPROVAL

REF :

PAGE: 1

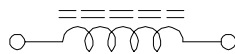
PROD. NAME	RADIAL INDUCTOR	ABC'S DWG NO.	RC1008□□□□L□-□□□
		ABC'S ITEM NO.	

. MECHANICAL DIMENSION :



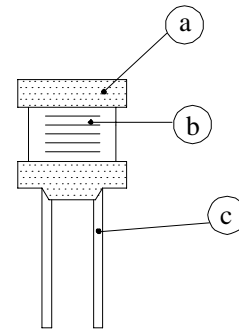
A :	10.0±0.5	m/m
B :	8.0±0.5	m/m
C :	18.0±3.0	m/m
F :	6.4 typ.	m/m
Wψ :	0.8±0.05	m/m

. SCHEMATIC DIAGRAM :



. MATERIALS :

- a . Core : Ferrite DR core
- b . Wire : Enamelled copper wire ( Class F )
- c . Lead : Sn/Ag/Cu
- d . Coating : Varnish
- e . Remark : Products comply with RoHS' requirements



. ELECTRICAL CHARACTERISTICS :

- a . Temp. rise : 30 typ. at rated current.
- b . Storage temp. : -25 ---- +85
- c . Operating temp. : -20 ---- +80

# SPECIFICATION FOR APPROVAL

REF :

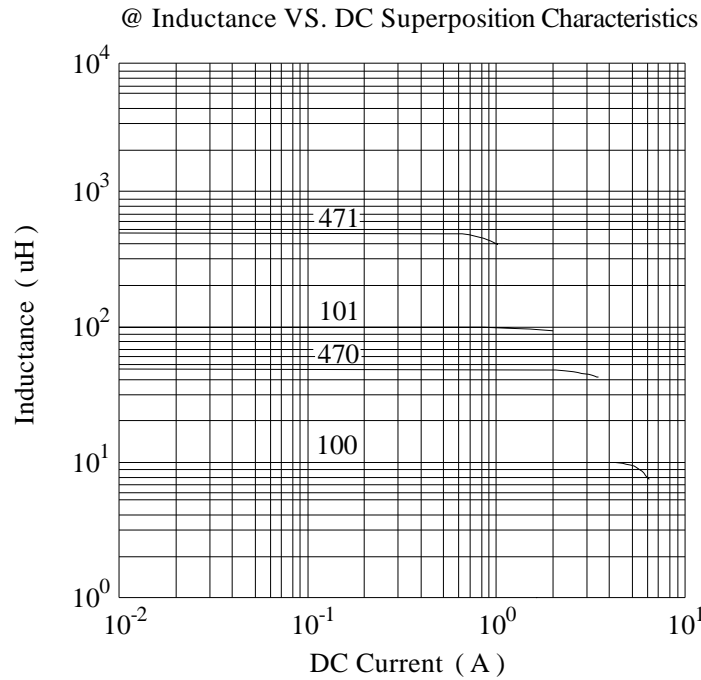
PAGE: 2

PROD. NAME	RADIAL INDUCTOR	ABC'S DWG NO.	RC1008□□□□L□-□□□
		ABC'S ITEM NO.	

**. ELECTRICAL CHARACTERISTICS :**

DWG No.	Inductance ( μH )	Test Freq. L	SRF ( MHz ) typ.	RDC ( Ω )		I <sub>rms</sub> ( A ) typ.	I <sub>sat</sub> ( A ) typ.
				max.	typ.		
RC1008100ML□-□□□	10 ±20%	1V/1KHz	22.00	0.026	0.019	4.50	4.70
RC1008150ML□-□□□	15 ±20%	1V/1KHz	16.50	0.035	0.026	3.80	4.00
RC1008220ML□-□□□	22 ±20%	1V/1KHz	14.00	0.050	0.034	3.00	3.30
RC1008330ML□-□□□	33 ±20%	1V/1KHz	10.00	0.070	0.050	2.50	2.70
RC1008470KL□-□□□	47 ±10%	1V/1KHz	9.20	0.098	0.077	2.20	2.40
RC1008680KL□-□□□	68 ±10%	1V/1KHz	7.00	0.145	0.112	1.80	2.00
RC1008101KL□-□□□	100 ±10%	1V/1KHz	6.00	0.210	0.165	1.40	1.60
RC1008151KL□-□□□	150 ±10%	1V/1KHz	4.90	0.300	0.238	1.20	1.40
RC1008221KL□-□□□	220 ±10%	1V/1KHz	3.80	0.420	0.335	1.00	1.10
RC1008331KL□-□□□	330 ±10%	1V/1KHz	3.30	0.660	0.530	0.80	0.92
RC1008471KL□-□□□	470 ±10%	1V/1KHz	2.70	0.860	0.685	0.72	0.80
RC1008681KL□-□□□	680 ±10%	1V/1KHz	2.20	1.280	1.020	0.56	0.63
RC1008102KL□-□□□	1000 ±10%	1V/1KHz	1.65	1.850	1.510	0.46	0.54

- 1). □ : Packaging information... [A] : Bulk
- 2). "-□□□" : Reference code
- 3). I<sub>rms</sub> base on temp. rise 30 typ.
- 4). I<sub>sat</sub> base on L/L0A=10% typ.



AR-001A



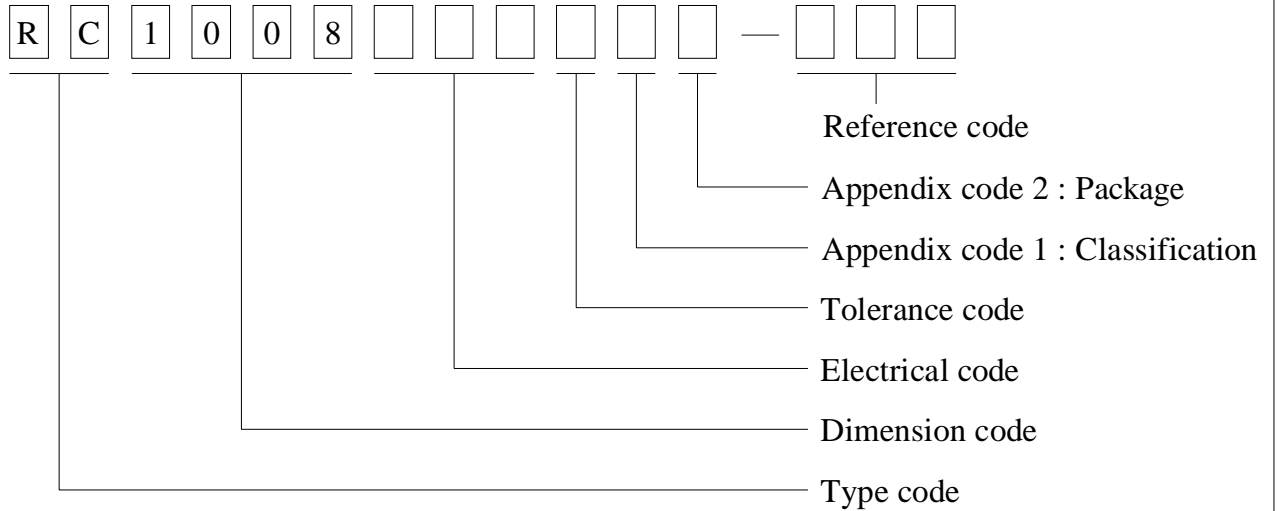
# SPECIFICATION FOR APPROVAL

REF :

PAGE: 3

PROD. NAME	RADIAL INDUCTOR	ABC'S DWG NO.	RC1008□□□□L□-□□□
		ABC'S ITEM NO.	

. DWGING NUMBER EXPRESSION :



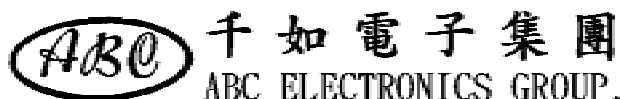
Appendix code 1 : Product Classification

- L : Lead Free Standard products comply with RoHS' requirements
- 1 ~ 9 : Lead Free Special products comply with RoHS' requirements

Appendix code 2 : Package Information

Code	Inner package	Inner package Q'TY	Remark
A	Box	130 pcs	

AR-001A



# SPECIFICATION FOR APPROVAL

REF :

PAGE: 4

PROD. NAME	RADIAL INDUCTOR	ABC'S DWG NO.	RC1008□□□□L□-□□□
		ABC'S ITEM NO.	

**UL CARD :**

OBMW2 September 8, 2000  
Magnet Wire-Component

**JUNG SHING WIRE CO LTD** E174837  
231 CHUNG CHENG RD, SEC 3 JEN-TEH HSIANG, TAINAN  
HSIEN TAIWAN

Mtl Dsg	Mark Dsg	BC	Coat Typ	OC	ANSI Type	Temp Class
AIW	---	Polyamideimide		---	MW81-C	220
CFUEWB	---	Polyurethane		---	MW75C	130
EIAIW	---	Polyesterimide		Polyamideimide	MW35C	200
EILOCKY	---	Polyesterimide		Polyamide	---	180
EILOCKW	---	Polyesterimide		Modified Epoxy	---	200
EIW	---	Polyesterimide		---	---	220
EIW-2	---	Polyesterimide		---	MW74-C	200
FL.EILOCKY	---	Modified Polyester		Polyamide	---	155
LSFFW	---	Polyurethane		---	MW79-C	155
LSUEW	---	Polyurethane		---	---	130
PEW	---	Polyester		---	---	155
PEY	---	Polyester		Nylon	MW24-C	155
SF.FLW	---	Modified Polyester		---	MW26C	155
SF.EIW	---	Polyesterimide		---	MW77C	180
SF.BY@	---	Modified Polyester		Nylon	MW27-C	155
SF.FLY@	---	Modified Polyester		Nylon	MW27-C	155
SF.BLOCKBS	---	Modified Polyester		Modified Polyamide	---	155
SF.EILOCKY#	---	Polyesterimide		Polyamide	---	180
SF.EILOCKBS	---	Polyesterimide		Modified Polyamide	---	180
SF.BW@	---	Modified Polyester		---	MW26C	155
SFFW	---	Polyurethane		---	MW79	155

287806002 Page 1 of 2

A not-for-profit organization  
dedicated to public safety and  
committed to quality service

Mtl Dsg	Mark Dsg	BC	Coat Typ	OC	ANSI Type	Temp Class
SFFY	---	Polyurethane		Polyamide	MW80C	155
UEW-1	---	Polyurethane		---	MW2-C	105
UEW-2	---	Polyurethane		---	---	130
UEW-4	---	Polyurethane		---	MW75C	130
UEY	---	Polyurethane		Nylon	MW28-C	130
UEY-2	---	Polyurethane		Polyamide	MW28-C	130

@-May be suffixed by LZ; # - May be suffixed by LZ, EL or LZL.  
LZ - Signifies magened wires twisted together; EL - signifies base coated magnet wire laid parallel with top coat applied overall; LZL - signi-  
fies base coated magnet wire twisted together and covered with top coat overall.

Marking: Company name or trademarks **JSW** or 榮星電線 , material designation or marked designation on packaed or reel, and  
Recognized Component Mark.

See General Information Preceding These Recognitions  
For use only in equipment where the acceptability of the combination is determined by Underwriters Laboratories Inc.

287806002 Page 2 of 2

OBMW2E174837  
September 8, 2000

AR-001A

