

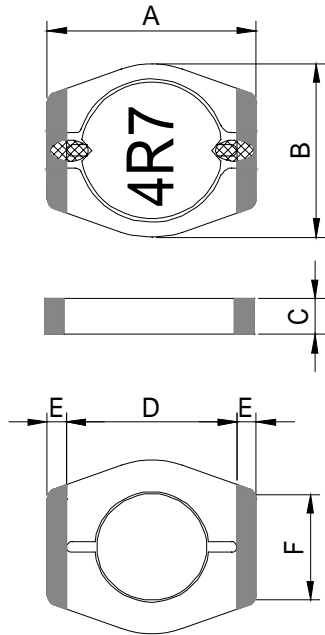
SPECIFICATION FOR APPROVAL

REF :

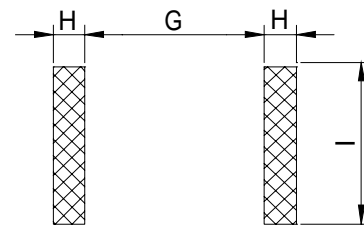
PAGE: 1

PROD. NAME	SMD POWER INDUCTOR	ABC'S DWG NO.	SB3506	L
		ABC'S ITEM NO.		

. CONFIGURATION & DIMENSIONS :

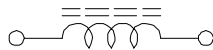


A	: 9.20	max.	m/m
B	: 7.90	max.	m/m
C	: 1.65	max.	m/m
D	: 6.80	typ.	m/m
E	: 0.90	typ.	m/m
F	: 5.06	typ.	m/m
G	: 7.20	ref.	m/m
H	: 1.20	ref.	m/m
I	: 5.80	ref.	m/m



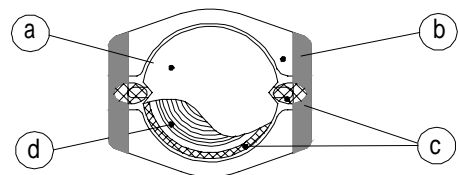
(PCB Pattern Suggestion)

. SCHEMATIC DIAGRAM :

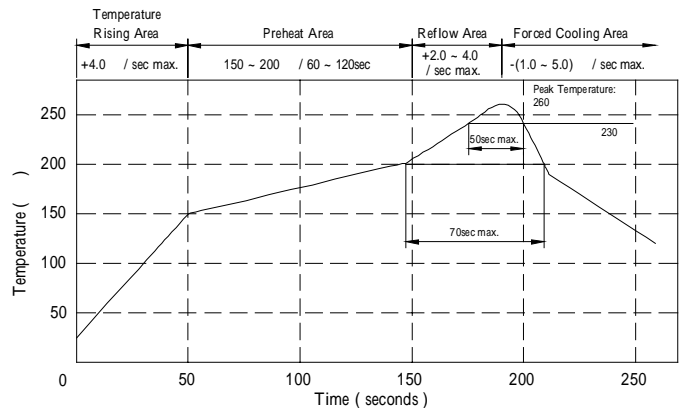


. MATERIALS :

- a . Core : Ferrite DR core
- b . Base : Ceramic base
- c . Adhesive : Epoxy resin
- d . Wire : Enamelled copper wire (class F)
- e . Terminal : MoMn/Ni/Au
- f . Remark : Lead content 200ppm max.
include ferrite



Peak Temp : 260 max.
Max time above 230 : 50sec max.
Max time above 200 : 70sec max.



. GENERAL SPECIFICATION :

- a . Temp. rise : 40 max.
- b . Rated current : Base on temp. rise
& L / LOA=10% typ.
- c . Storage temp. : -40 ----+125
- d . Operating temp. : -40 ----+105
- e . Resistance to solder heat : 260 .10 secs.

AE-001A

SPECIFICATION FOR APPROVAL

REF :

PAGE: 2

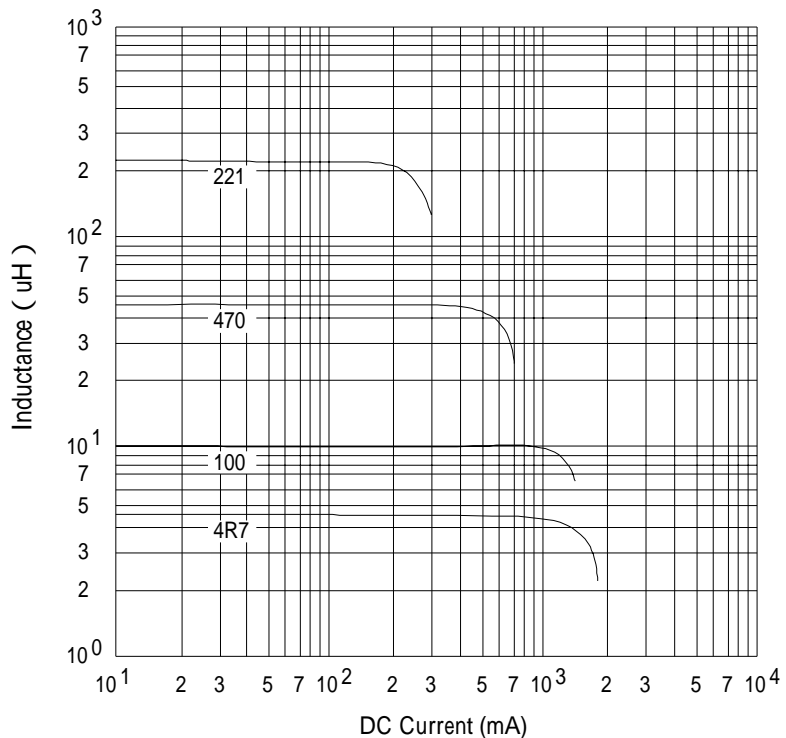
PROD. NAME	SMD POWER INDUCTOR	ABC'S DWG NO.	SB3506	L
		ABC'S ITEM NO.		

ELECTRICAL CHARACTERISTICS :

DWG. No.	Inductance (μ H)	Test Freq. (Hz)	SRF (MHz) typ	RDC (Ω) $\pm 20\%$	I _{rms} (A) max	I _{sat} (A) typ
SB35064R7ML	4.7 $\pm 20\%$	100K	65	0.125	1.50	1.40
SB35066R8ML	6.8 $\pm 20\%$	100K	55	0.160	1.40	1.30
SB3506100ML	10.0 $\pm 20\%$	100K	48	0.200	1.20	1.10
SB3506150ML	15.0 $\pm 20\%$	100K	35	0.300	0.90	0.90
SB3506220ML	22.0 $\pm 20\%$	100K	30	0.380	0.76	0.70
SB3506330ML	33.0 $\pm 20\%$	100K	22	0.530	0.68	0.62
SB3506470ML	47.0 $\pm 20\%$	100K	20	0.770	0.54	0.42
SB3506680ML	68.0 $\pm 20\%$	100K	16	1.100	0.42	0.38
SB3506101ML	100.0 $\pm 20\%$	100K	13	1.600	0.36	0.35
SB3506151ML	150.0 $\pm 20\%$	100K	11	2.500	0.28	0.28
SB3506221ML	220.0 $\pm 20\%$	100K	9	3.900	0.24	0.24

- 1). : Packaging information A : Bulk B : Taping Reel
- 2). Inductance test freq. : 100KHz / 0.1V
- 3). I_{rms} base on temp. rise 40 max.
- 4). I_{sat} base on L/L0A=10 % typ.

@ Inductance VS. DC Current Curve



AE-001A

SPECIFICATION FOR APPROVAL

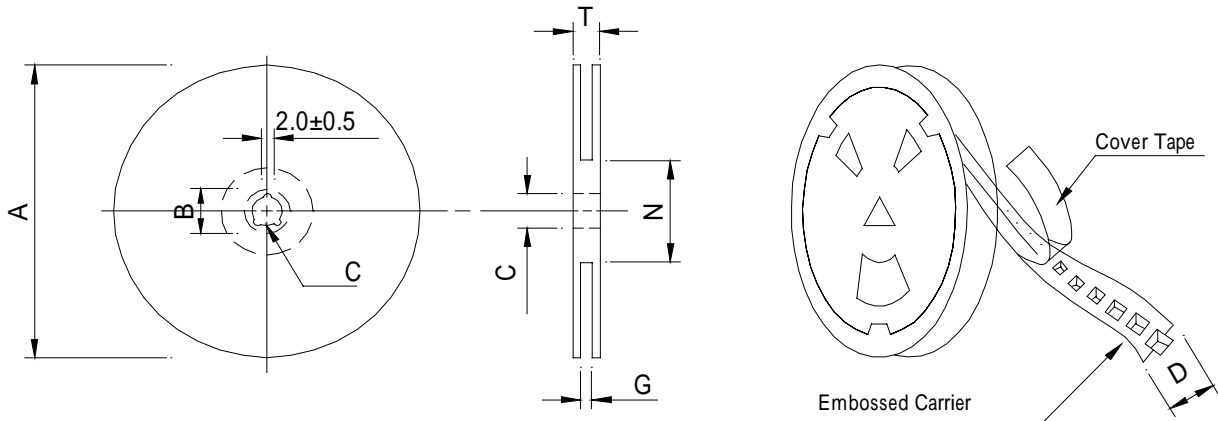
REF :

PAGE: 3

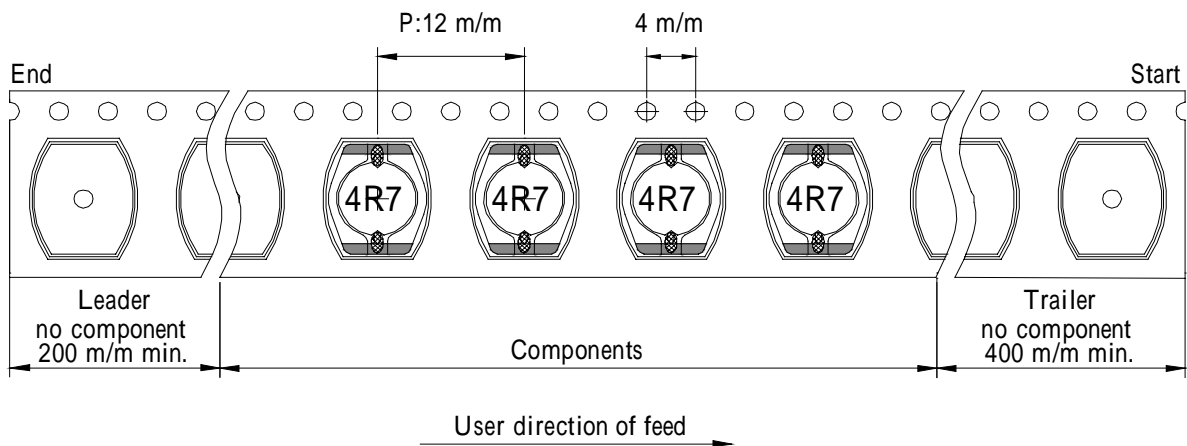
PROD. NAME	SMD POWER INDUCTOR	ABC'S DWG NO.	SB3506	L
		ABC'S ITEM NO.		

PACKAGING INFORMATION :

(1) Configuration



Carrier Tape Width : D



(2) Dimensions

Unit:m/m

Style	A	B	C	D	G	N	T
07-16	178	21±0.8	13	16	18 ⁺⁰	50 ⁻⁰	20.5

(3) Q'TY & G.W. Per package

Series	Inner : Reel			Outer : Carton		
	Q'TY (pcs)	G.W. (gw)	Style	Q'TY (pcs)	G.W. (Kg)	Size (cm)
SB3506	600	250	07-16	18,000	8.0	42 x 41 x 24

AE-001A

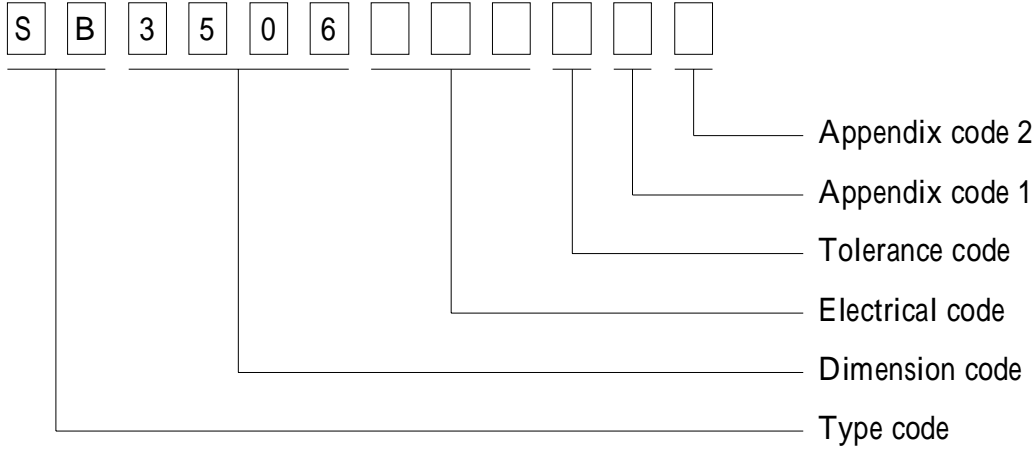
SPECIFICATION FOR APPROVAL

REF :

PAGE: 4

PROD. NAME	SMD POWER INDUCTOR	ABC'S DWG NO.	SB3506	L
		ABC'S ITEM NO.		

. DWG EXPRESSION :



Appendix code 1 : S : Standard products
 A K , M R , T Z : Special products
 L : Standard Lead Free products
 1 ~ 9 : Special Lead Free products

Appendix code 2 :

Code	Inner package	Inner package Q'TY	Remark
A	Empty	Empty	
B	T / R (Reel package)	600 pcs	

SPECIFICATION FOR APPROVAL

REF :

PAGE: 5

PROD. NAME	SMD POWER INDUCTOR	ABC'S DWG NO.	SB3506	L
		ABC'S ITEM NO.		

. RELIABILITY TEST :

Test item	Specification	Test condition						
Solderability	More than 90% of the terminal electrode shall be covered With fresh solder.	Preheat : 150±25 for 60 seconds Solder : Sn96.5 / Ag3 / Cu0.5 or equivalent Solder temp. : 235±5 Flux : Rosin Dip time : 4±1 seconds						
Thermal shock test (Temp. cycle)	Inductance shall not change more than ±20%	<table style="width: 100%; border: none;"> <tr> <td style="text-align: center;">Room temp. 15 minutes</td> <td style="text-align: center;">→</td> <td style="text-align: center;"><u>-25±2</u> 30 minutes</td> </tr> <tr> <td style="text-align: center;">Room temp. 15 minutes</td> <td style="text-align: center;">→</td> <td style="text-align: center;"><u>85±2</u> 30 minutes</td> </tr> </table> <p>Total : 50 cycles</p>	Room temp. 15 minutes	→	<u>-25±2</u> 30 minutes	Room temp. 15 minutes	→	<u>85±2</u> 30 minutes
Room temp. 15 minutes		→	<u>-25±2</u> 30 minutes					
Room temp. 15 minutes		→	<u>85±2</u> 30 minutes					
Humidity Resistance test		Temperature : 40±2 Humidity : 90 ~ 95% Applied current : Per spec. Time : 500 hours						
High temp. Resistance test	Temperature : 105±2 Applied current : Per spec. Time : 500 hours							

AE-001A



SPECIFICATION FOR APPROVAL

REF :

PAGE: 6

PROD. NAME	SMD POWER INDUCTOR	ABC'S DWG NO.	SB3506	L
		ABC'S ITEM NO.		

UL CARD :

OBMW2 September 8, 2000
Magnet Wire-Component
JUNG SHING WIRE CO LTD E174837
231 CHUNG CHENG RD, SEC 3 JEN-TEH HSIANG, TAINAN
HSIEN TAIWAN

Mtl Dsg	Mark Dsg	BC	Coat Typ	OC	ANSI Type	Temp Class
AIW	---	Polyamideimide		---	MW81-C	220
CFUEWB	---	Polyurethane		---	MW75C	130
EIAIW	---	Polyesterimide	Polyamideimide	---	MW35C	200
EILOCKY	---	Polyesterimide	Polyamide	---	---	180
EILOCKW	---	Polyesterimide	Modified Epoxy	---	---	200
EIW	---	Polyesterimide		---	---	220
EIW-2	---	Polyesterimide		---	MW74-C	200
FL.EILOCKY	---	Modified Polyester	Polyamide	---	---	155
LSFFW	---	Polyurethane		---	MW79-C	155
LSUEW	---	Polyurethane		---	---	130
PEW	---	Polyester		---	---	155
PEY	---	Polyester	Nylon	---	MW24-C	155
SF.FLW	---	Modified Polyester		---	MW26C	155
SF.EIW	---	Polyesterimide		---	MW77C	180
SF.BY@	---	Modified Polyester	Nylon	---	MW27-C	155
SF.FLY@	---	Modified Polyester	Nylon	---	MW27-C	155
SF.BLOCKBS	---	Modified Polyester	Modified Polyamide	---	---	155
SF.EILOCKY#	---	Polyesterimide	Polyamide	---	---	180
SF.EILOCKBS	---	Polyesterimide	Modified Polyamide	---	---	180
SF.BW@	---	Modified Polyester		---	MW26C	155
SFFW	---	Polyurethane		---	MW79	155

287806002 Page 1 of 2

A not-for-profit organization dedicated to public safety and committed to quality service

Mtl Dsg	Mark Dsg	BC	Coat Typ	OC	ANSI Type	Temp Class
SFFY	---	Polyurethane		Polyamide	MW80C	155
UEW-1	---	Polyurethane		---	MW2-C	105
UEW-2	---	Polyurethane		---	---	130
UEW-4	---	Polyurethane		---	MW75C	130
UEY	---	Polyurethane	Nylon	---	MW28-C	130
UEY-2	---	Polyurethane	Polyamide	---	MW28-C	130

@ - May be suffixed by LZ; # - May be suffixed by LZ, EL or LZI.
LZ - Signifies magned wires twisted together; EL - signifies base coated magnet wire laid parallel with top coat applied overall; LZL - signifies base coated magnet wire twisted together and covered with top coat overall.

Marking: Company name or trademarks JSW or 榮星電線, material designation or marked designation on packaed or reel, and Recognized Component Mark.

See General Information Preceding These Recognitions
For use only in equipment where the acceptability of the combination is determined by Underwriters Laboratories Inc.

287806002 Page 2 of 2

OBMW2 / E174837
September 8, 2000

AE-001A

