

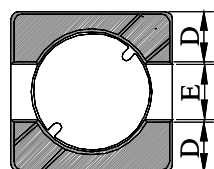
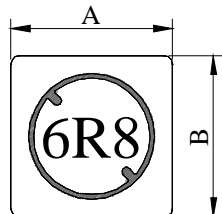
# SPECIFICATION FOR APPROVAL

REF :

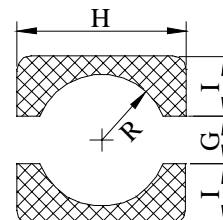
PAGE: 1

PROD. NAME	SHIELDED SMD POWER INDUCTOR	ABC'S DWG NO.	SH3018□□□□L□
		ABC'S ITEM NO.	

## I . CONFIGURATION & DIMENSIONS :

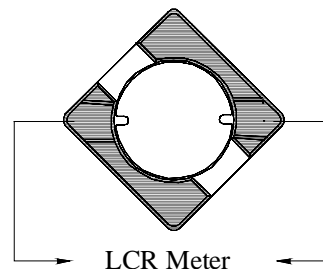
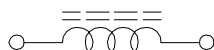


- A : 3.80±0.30 m/m
- B : 3.80±0.30 m/m
- C : 1.65±0.15 m/m
- D : 1.30 typ. m/m
- E : 1.20 typ. m/m
- G : 1.10 ref. m/m
- H : 4.30 ref. m/m
- I : 1.60 ref. m/m
- R : 1.30 ref. m/m



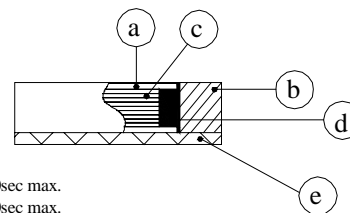
(PCB Pattern suggestion)

## II . SCHEMATIC DIAGRAM :



## III . MATERIALS :

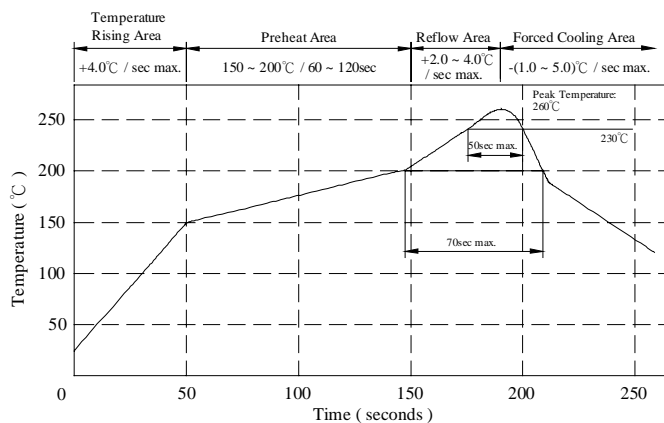
- a . Core : Ferrite DR core
- b . Core : Ferrite RI core
- c . Wire : Enamelled copper wire (class F)
- d . Adhesive : Epoxy resin
- e . Terminal : Ag/Ni/Sn
- f . Remark : Lead content 200ppm max.  
include ferrite



Peak Temp : 260°C max.  
Max time above 230°C : 50sec max.  
Max time above 200°C : 70sec max.

## IV . GENERAL SPECIFICATION :

- a . Temp. rise : 30°C max.
- b . Storage temp. : -40°C ----+125°C
- c . Operating temp. : -25°C ----+105°C
- d . Resistance to solder heat : 260°C .10 secs.



AE-001A

# SPECIFICATION FOR APPROVAL

REF :

PAGE: 2

PROD. NAME	SHIELDED SMD POWER INDUCTOR	ABC'S DWG NO. ABC'S ITEM NO.	SH3016□□□□L□
---------------	--------------------------------	---------------------------------	--------------

**V . ELECTRICAL CHARACTERISTICS :**

DWG No.	Inductance ( μH )	RDC (mΩ) max.	IDC (mA) typ.
SH30161R5YL□	1.5 ±30%	45.0	1450.0
SH30162R5YL□	2.5±30%	65.0	1150.0
SH30163R6YL□	3.6 ±30%	90.0	900.0
SH30164R7YL□	4.7 ±30%	120.0	800.0
SH30166R8YL□	6.8 ±30%	170.0	660.0
SH3016100YL□	10.0 ±30%	240.0	520.0
SH3016150YL□	15.0 ±30%	340.0	430.0
SH3016220YL□	22.0 ±30%	510.0	360.0
SH3016330YL□	33.0 ±30%	780.0	290.0
SH3016470YL□	47.0 ±30%	1200.0	230.0
SH3016680YL□	68.0 ±30%	1800.0	200.0
SH3016101YL□	100.0 ±30%	2400.0	160.0

- 1). □ : Packaging information... [A] : Bulk [B] : Taping Reel
- 2). Inductance Test Freq. : 100KHz /0.1V
- 3). IDC Base on Tenp. rese 30°C max. & ΔL/L0A = 35% typ.

# SPECIFICATION FOR APPROVAL

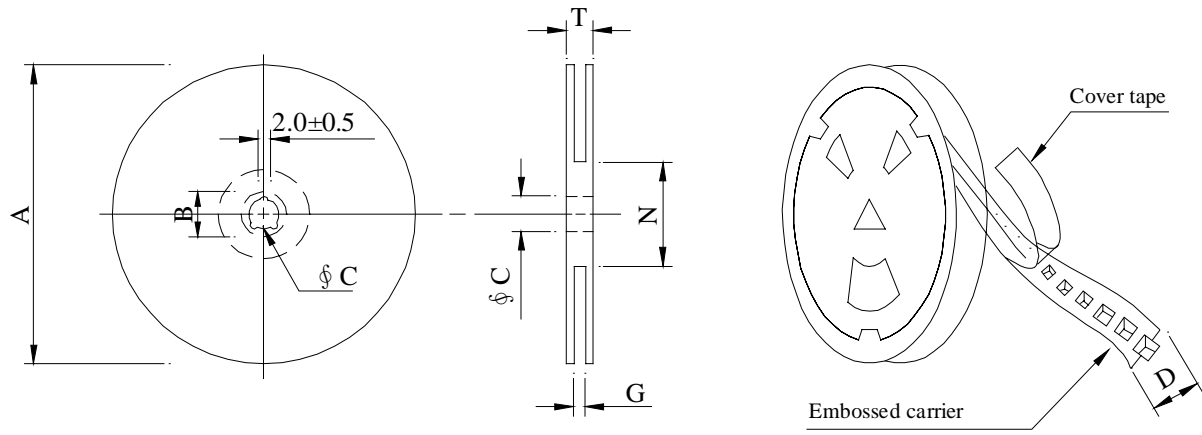
REF :

PAGE: 3

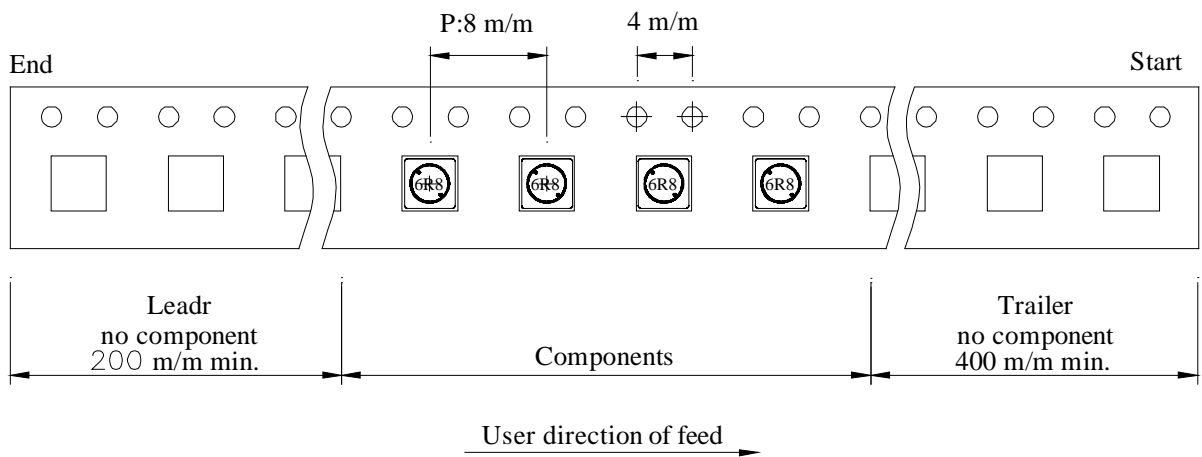
PROD. NAME	SHIELDED SMD POWER INDUCTOR	ABC'S DWG NO.	SH3016□□□□L□
		ABC'S ITEM NO.	

## VI . PACKAGING INFORMATION :

### ( 1 ) Configuration



※Carrier tape width : D



### ( 2 ) Dimensions

Unit:m/m

Style	A	B	C	D	G	N	T
07 - 12	178	21±0.8	13	12	14 <sup>+0</sup>	50 <sup>-0</sup>	16.5

### ( 3 ) Q'TY & G.W. Per package

Series	Inner : Reel			Outer : Carton		
	Q'TY (pcs)	G.W. (gw)	Style	QTY (pcs)	G.W. (Kg)	Size (cm)
SH3016	1,000	150	07 - 12	40,000	8.50	42 x 41 x 24

AE-001A



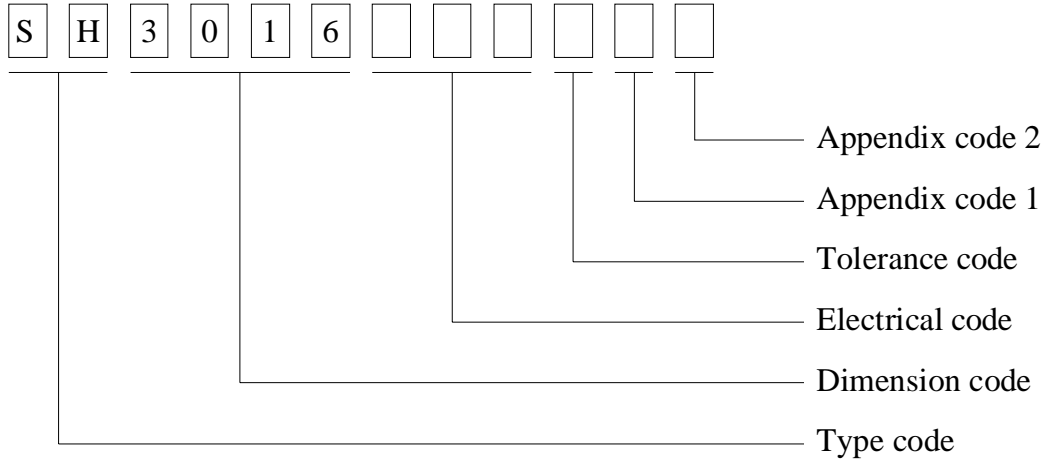
# SPECIFICATION FOR APPROVAL

REF :

PAGE: 4

PROD. NAME	SHIELDED SMD POWER INDUCTOR	ABC'S DWG NO.	SH3016□□□□L□
		ABC'S ITEM NO.	

**VII . DWG EXPRESSION :**



- Appendix code 1 : S : Standard products  
 A~K , M~R , T~Z : Special products  
 L : Standard Lead Free products  
 1 ~ 9 : Special Lead Free products

Appendix code 2 :

Code	Inner package	Inner package Q'TY	Remark
A	Empty	Empty	
B	T / R ( Reel package )	1,000 pcs	

# SPECIFICATION FOR APPROVAL

REF :

PAGE: 5

PROD. NAME	SHIELDED SMD POWER INDUCTOR	ABC'S DWG NO. ABC'S ITEM NO.	SH3016□□□□L□
---------------	--------------------------------	---------------------------------	--------------

**VIII . RELIABILITY TEST :**

Test item	Specification	Test condition						
Solderability	More than 90% of the terminal electrode shall be covered With fresh solder.	Preheat : 150±25°C for 60 seconds Solder : Sn96.5 / Ag3 / Cu0.5 or equivalent Solder temp. : 235±5°C Flux : Rosin Dip time : 4±1 seconds						
Thermal shock test ( Temp. cycle )	Inductance shall not change more than ±20%	<table style="width: 100%; border: none;"> <tr> <td style="text-align: center;">Room temp. 15 minutes</td> <td style="text-align: center;">—————&gt;</td> <td style="text-align: center;">-25±2 °C 30 minutes</td> </tr> <tr> <td style="text-align: center;">Room temp. 15 minutes</td> <td style="text-align: center;">—————&gt;</td> <td style="text-align: center;">85±2 °C 30 minutes</td> </tr> </table> <p>Total : 50 cycles</p>	Room temp. 15 minutes	—————>	-25±2 °C 30 minutes	Room temp. 15 minutes	—————>	85±2 °C 30 minutes
Room temp. 15 minutes		—————>	-25±2 °C 30 minutes					
Room temp. 15 minutes		—————>	85±2 °C 30 minutes					
Humidity Resistance test		Temperature : 40±2°C Humidity : 90 ~ 95% Applied current : Per spec. Time : 500 hours						
High temp. Resistance test	Temperature : 105±2°C Applied current : Per spec. Time : 500 hours							

# SPECIFICATION FOR APPROVAL

REF :

PAGE: 6

PROD. NAME	SHIELDED SMD  POWER INDUCTOR	ABC'S DWG NO.  ABC'S ITEM NO.	SH3016□□□□L□
---------------	------------------------------------	-------------------------------------	--------------

IX . UL CARD :

OBMW2
September 8, 2000

Magnet Wire-Component

JUNG SHING WIRE CO LTD
E174837

231 CHUNG CHENG RD, SEC 3 JEN-TEH HSIANG, TAINAN  
HSIEN TAIWAN

Mtl Dsg	Mark Dsg	BC	Coat Typ	OC	ANSI Type	Temp Class
AIW	---	Polyamideimide	---	---	MW81-C	220
CFUEWB	---	Polyurethane	---	---	MW75C	130
EIAIW	---	Polyesterimide	Polyamideimide	---	MW35C	200
EILOCKY	---	Polyesterimide	Polyamide	---	---	180
EILOCKW	---	Polyesterimide	Modified Epoxy	---	---	200
EIW	---	Polyesterimide	---	---	---	220
EIW-2	---	Polyesterimide	---	---	MW74-C	200
FL.EILOCKY	---	Modified Polyester	Polyamide	---	---	155
LSFFW	---	Polyurethane	---	---	MW79-C	155
LSUEW	---	Polyurethane	---	---	---	130
PEW	---	Polyester	---	---	---	155
PEY	---	Polyester	Nylon	---	MW24-C	155
SF.FLW	---	Modified Polyester	---	---	MW26C	155
SF.EIW	---	Polyesterimide	---	---	MW77C	180
SF.BY@	---	Modified Polyester	Nylon	---	MW27-C	155
SF.FLY@	---	Modified Polyester	Nylon	---	MW27-C	155
SF.BLOCKBS	---	Modified Polyester	Modified Polyamide	---	---	155
SF.EILOCKY#	---	Polyesterimide	Polyamide	---	---	180
SF.EILOCKBS	---	Polyesterimide	Modified Polyamide	---	---	180
SF.BW@	---	Modified Polyester	---	---	MW26C	155
SFFW	---	Polyurethane	---	---	MW79	155

28780602 Page 1 of 2

A not-for-profit organization  
dedicated to public safety and  
committed to quality service

Mtl Dsg	Mark Dsg	BC	Coat Typ	OC	ANSI Type	Temp Class
SFFY	---	Polyurethane	Polyamide	---	MW80C	155
UEW-1	---	Polyurethane	---	---	MW2-C	105
UEW-2	---	Polyurethane	---	---	---	130
UEW-4	---	Polyurethane	---	---	MW75C	130
UEY	---	Polyurethane	Nylon	---	MW28-C	130
UEY-2	---	Polyurethane	Polyamide	---	MW28-C	130

@-May be suffixed by LZ; # - May be suffixed by LZ, EL or LZL.  
LZ - Signifies magnet wires twisted together; EL - signifies base coated magnet wire laid parallel with top coat applied overall; LZL - signi-  
fies base coated magnet wire twisted together and covered with top coat overall.

Marking: Company name or trademarks JSW or 榮星電線, material designation or marked designation on packaed or reel, and  
Recognized Component Mark.

See General Information Preceding These Recognitions  
For use only in equipment where the acceptability of the combination is determined by Underwriters Laboratories Inc.

28780602 Page 2 of 2

OBMW2E174837  
September 8, 2000

AE-001A

