

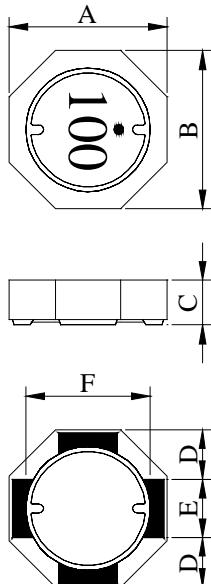
SPECIFICATION FOR APPROVAL

REF :

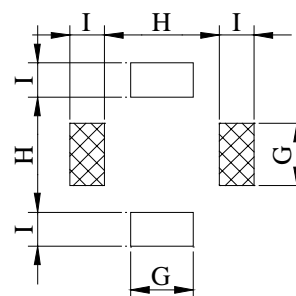
PAGE: 1

PROD. NAME	SHIELDED SMD POWER INDUCTOR	ABC'S DWG NO.	SU5028□□□□L□
		ABC'S ITEM NO.	

I . CONFIGURATION & DIMENSIONS :

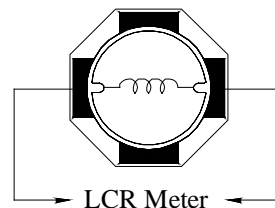
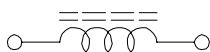


A :	5.20	±0.20	m/m
B :	5.20	±0.20	m/m
C :	2.80	±0.20	m/m
D :	1.70	typ.	m/m
E :	1.80	typ.	m/m
F :	3.90	typ.	m/m
G :	2.00	ref.	m/m
H :	3.70	ref.	m/m
I :	1.10	ref.	m/m



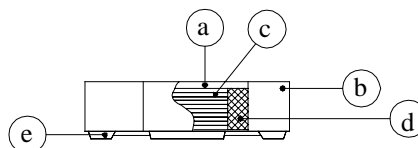
(PCB Pattern Suggestion)

II . SCHEMATIC DIAGRAM :



III . MATERIALS :

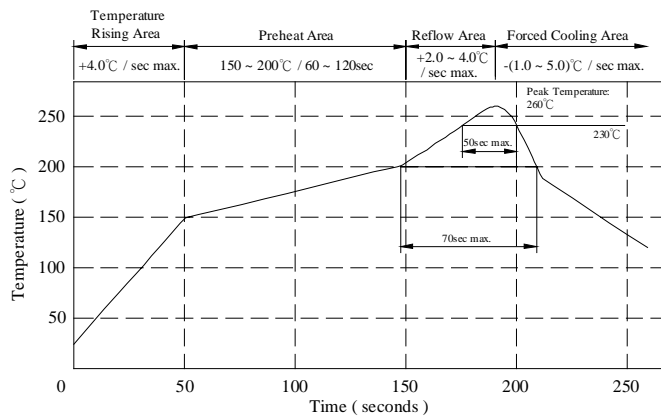
- a . Core : Ferrite DR core
- b . Core : Ferrite RI core
- c . Wire : Enamelled copper wire (class F)
- d . Adhesive : Epoxy resin
- e . Terminal : Ag/Ni/Sn
- f . Remark : Lead content 200ppm max.
include ferrite



Peak Temp : 260°C max.
Max time above 230°C : 50sec max.
Max time above 200°C : 70sec max.

IV . GENERAL SPECIFICATION :

- a . Temp. rise : 40°C typ.
- b . Rated current :
Base on temp. rise & $\Delta L / LOA=35\%$ typ.
- c . Storage temp. : -40°C ----+125°C
- d . Operating temp. : -40°C ----+105°C
- e . Resistance to solder heat : 260°C .10 secs.



AE-001A

SPECIFICATION FOR APPROVAL

REF :

PAGE: 2

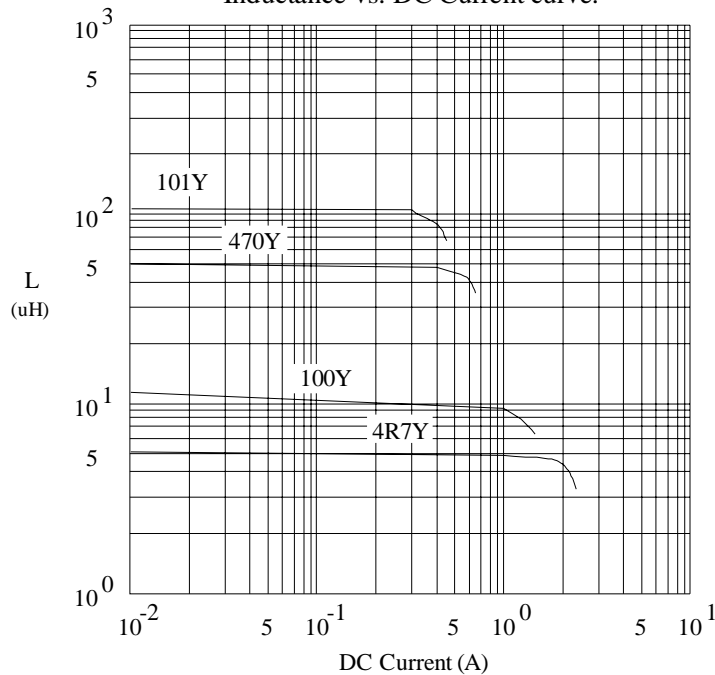
PROD. NAME	SHIELDED SMD POWER INDUCTOR	ABC'S DWG NO.	SU5028□□□□L□
		ABC'S ITEM NO.	

V . ELECTRICAL CHARACTERISTICS :

DWG No.	Inductance (μ H)	Q ref.	Test Freq. (Hz)		RDC (m Ω)		SRF (MHz) typ.	I _{rms} (mA) typ.	I _{sat} (mA) typ.
			L	Q	typ.	max.			
SU50281R2YL□	1.2 ± 30 %	10.0	100K	7.96M	16.8	22.0	200	3500	3400
SU50282R2YL□	2.2 ± 30 %	10.0	100K	7.96M	21.0	27.0	130	3200	2500
SU50283R3YL□	3.3 ± 30 %	10.0	100K	7.96M	24.0	32.0	90	2800	2100
SU50284R7YL□	4.7 ± 30 %	9.0	100K	7.96M	32.0	45.0	50	2200	1850
SU50286R8YL□	6.8 ± 30 %	10.0	100K	7.96M	42.0	56.0	55	2000	1550
SU5028100YL□	10.0 ± 30 %	18.0	100K	2.52M	63.0	85.0	25	1800	1400
SU5028150YL□	15.0 ± 30 %	18.0	100K	2.52M	108.0	140.0	23	1100	1000
SU5028220YL□	22.0 ± 30 %	15.0	100K	2.52M	162.0	210.0	18	950	850
SU5028330YL□	33.0 ± 30 %	15.0	100K	2.52M	203.0	260.0	16	800	680
SU5028470YL□	47.0 ± 30 %	13.0	100K	2.52M	285.0	360.0	13	700	620
SU5028680YL□	68.0 ± 30 %	13.0	100K	2.52M	450.0	550.0	10	560	460
SU5028101YL□	100.0 ± 30 %	15.0	100K	796K	625.0	800.0	8	470	420

- 1) . □ : Packaging Information... [A] : Bulk [B] : Taping Reel
- 2) . Inductance Test Freq. : 100KHz / 0.1V
- 3) . I_{sat} base on $\Delta L / LOA = 35\%$ typ.
- 4) . I_{rms} base on Temp. rise 40°C typ.

* Inductance vs. DC Current curve.



AE-001A

SPECIFICATION FOR APPROVAL

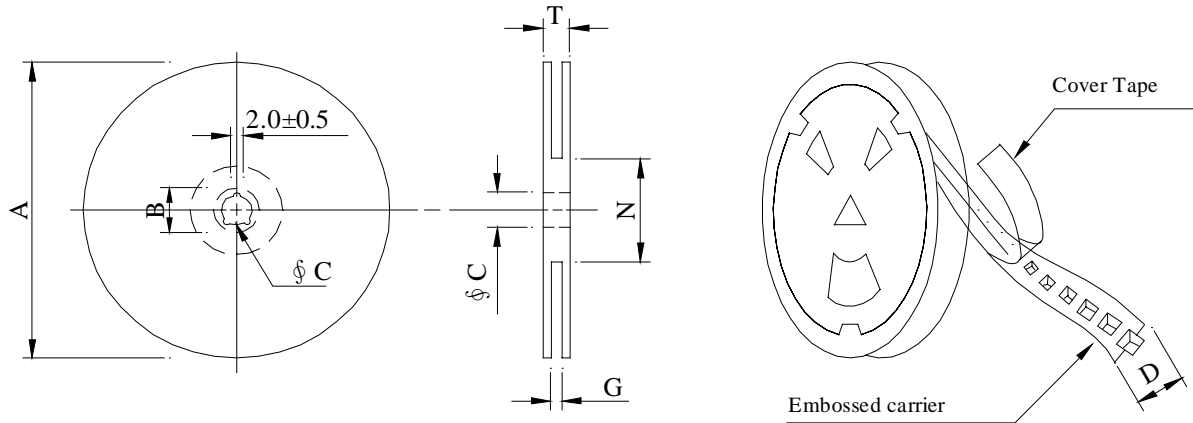
REF :

PAGE: 3

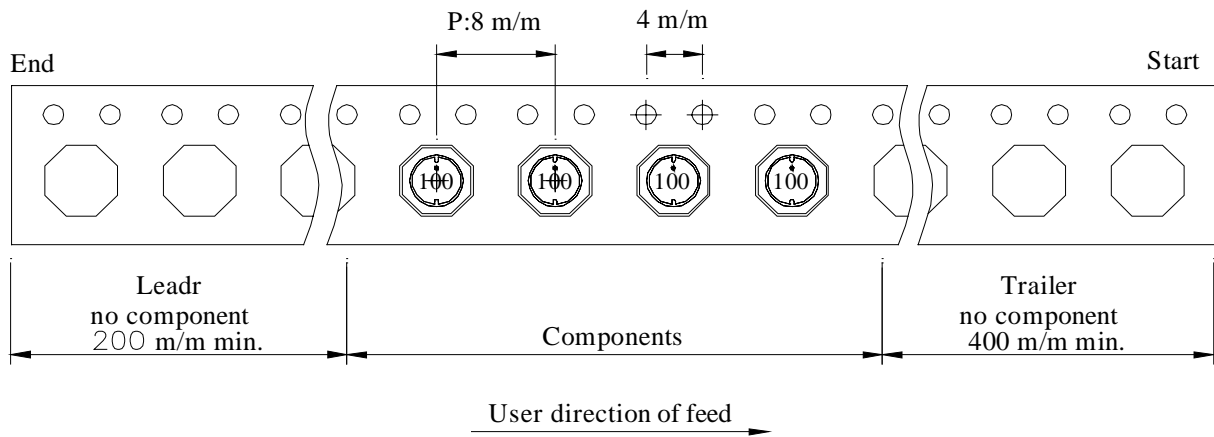
PROD. NAME	SHIELDED SMD POWER INDUCTOR	ABC'S DWG NO.	SU5028□□□□L□
		ABC'S ITEM NO.	

VI . PACKAGING INFORMATION :

(1) Configuration



※Carrier tape width : D



(2) Dimensions

Unit:m/m

Style	A	B	C	D	G	N	T
07 - 12	178	21±0.8	13	12	14 ⁺⁰	50 ⁻⁰	16.5

(3) Q'TY & G.W. Per package

Series	Inner : Reel			Outer : Carton		
	Q'TY (pcs)	G.W. (gw)	Style	Q'TY (pcs)	G.W. (Kg)	Size (cm)
SU5028	600	185	07 - 12	24,000	8.4	42 x 41 x 24

AE-001A

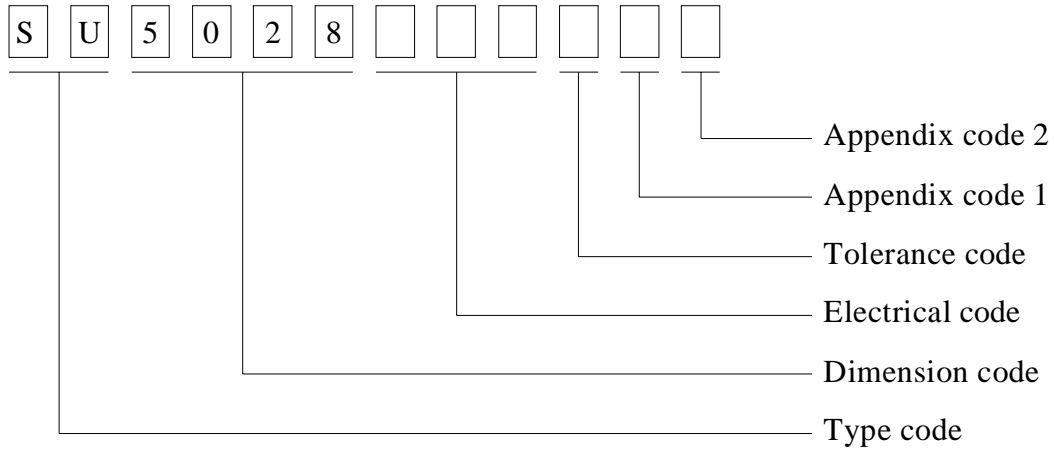
SPECIFICATION FOR APPROVAL

REF :

PAGE: 4

PROD. NAME	SHIELDED SMD POWER INDUCTOR	ABC'S DWG NO.	SU5028□□□□L□
		ABC'S ITEM NO.	

VII . DWG EXPRESSION :



- Appendix code 1 : S : Standard products
 A ~ K , M ~ R , T ~ Z : Special products
 L : Standard Lead Free products
 1 ~ 9 : Special Lead Free products

Appendix code 2 :

Code	Inner package	Inner package Q'TY	Remark
A	Empty	Empty	
B	T / R (Reel package)	600 pcs	

SPECIFICATION FOR APPROVAL

REF :

PAGE: 5

PROD. NAME	SHIELDED SMD POWER INDUCTOR	ABC'S DWG NO. ABC'S ITEM NO.	SU5028□□□□L□
---------------	--------------------------------	---------------------------------	--------------

VIII . RELIABILITY TEST :

Test item	Specification	Test condition						
Solderability	More than 90% of the terminal electrode shall be covered With fresh solder.	Preheat : 150±25°C for 60 seconds Solder : Sn96.5 / Ag3 / Cu0.5 or equivalent Solder temp. : 235±5°C Flux : Rosin Dip time : 4±1 seconds						
Thermal shock test (Temp. cycle)	Inductance shall not change more than ±30%	<table style="width: 100%; border: none;"> <tr> <td style="text-align: center;">Room temp. 15 minutes</td> <td style="text-align: center;">—————▶</td> <td style="text-align: center;"><u>-25±2 °C</u> 30 minutes</td> </tr> <tr> <td style="text-align: center;">Room temp. 15 minutes</td> <td style="text-align: center;">—————▶</td> <td style="text-align: center;"><u>85±2 °C</u> 30 minutes</td> </tr> </table> <p>Total : 50 cycles</p>	Room temp. 15 minutes	—————▶	<u>-25±2 °C</u> 30 minutes	Room temp. 15 minutes	—————▶	<u>85±2 °C</u> 30 minutes
Room temp. 15 minutes		—————▶	<u>-25±2 °C</u> 30 minutes					
Room temp. 15 minutes		—————▶	<u>85±2 °C</u> 30 minutes					
Humidity Resistance test		Temperature : 40±2°C Humidity : 90 ~ 95% Applied current : Per spec. Time : 500 hours						
High temp. Resistance test	Temperature : 105±2°C Applied current : Per spec. Time : 500 hours							

AE-001A



SPECIFICATION FOR APPROVAL

REF :

PAGE: 6

PROD. NAME	SHIELDED SMD POWER INDUCTOR	ABC'S DWG NO.	SU5028□□□□L□
		ABC'S ITEM NO.	

IX . UL CARD :

OBMW2 September 8, 2000

Magnet Wire-Component

JUNG SHING WIRE CO LTD E174837

231 CHUNG CHENG RD, SEC 3 JEN-TEH HSIANG, TAINAN
HSIEN TAIWAN

Mtl Dsg	Mark Dsg	BC	Coat Typ	OC	ANSI Type	Temp Class
AIW	---	Polyamideimide		---	MW81-C	220
CFUEWB	---	Polyurethane		---	MW75C	130
EIAIW	---	Polyesterimide		Polyamideimide	MW35C	200
EILOCKY	---	Polyesterimide		Polyamide	---	180
EILOCKW	---	Polyesterimide		Modified Epoxy	---	200
EIW	---	Polyesterimide		---	---	220
EIW-2	---	Polyesterimide		---	MW74-C	200
FL.EILOCKY	---	Modified Polyester		Polyamide	---	155
LSFFW	---	Polyurethane		---	MW79-C	155
LSUEW	---	Polyurethane		---	---	130
PEW	---	Polyester		---	---	155
PEY	---	Polyester		Nylon	MW24-C	155
SF.FLW	---	Modified Polyester		---	MW26C	155
SF.EIW	---	Polyesterimide		---	MW77C	180
SF.BY@	---	Modified Polyester		Nylon	MW27-C	155
SF.FLY@	---	Modified Polyester		Nylon	MW27-C	155
SF.BLOCKBS	---	Modified Polyester		Modified Polyamide	---	155
SF.EILOCKY#	---	Polyesterimide		Polyamide	---	180
SF.EILOCKBS	---	Polyesterimide		Modified Polyamide	---	180
SF.BW@	---	Modified Polyester		---	MW26C	155
SFFW	---	Polyurethane		---	MW79	155

287806002 Page 1 of 2

A not-for-profit organization
dedicated to public safety and
committed to quality service

Mtl Dsg	Mark Dsg	BC	Coat Typ	OC	ANSI Type	Temp Class
SFFY	---	Polyurethane		Polyamide	MW80C	155
UEW-1	---	Polyurethane		---	MW2-C	105
UEW-2	---	Polyurethane		---	---	130
UEW-4	---	Polyurethane		---	MW75C	130
UEY	---	Polyurethane		Nylon	MW28-C	130
UEY-2	---	Polyurethane		Polyamide	MW28-C	130

@ - May be suffixed by LZ; # - May be suffixed by LZ, EL or LZL.
 LZ - Signifies magnd wires twisted together; EL - signifies base coated magnet wire laid parallel with top coat applied overall; LZL - signi-
 fies base coated magnet wire twisted together and covered with top coat overall.
 Marking: Company name or trademarks (JSW) or 榮星電線 , material designation or marked designation on packaed or reel, and
 Recognized Component Mark.

See General Information Preceding These Recognitions
 For use only in equipment where the acceptability of the combination is determined by Underwriters Laboratories Inc.

287806002 Page 2 of 2

OBMW2E174837
September 8, 2000

AE-001A

