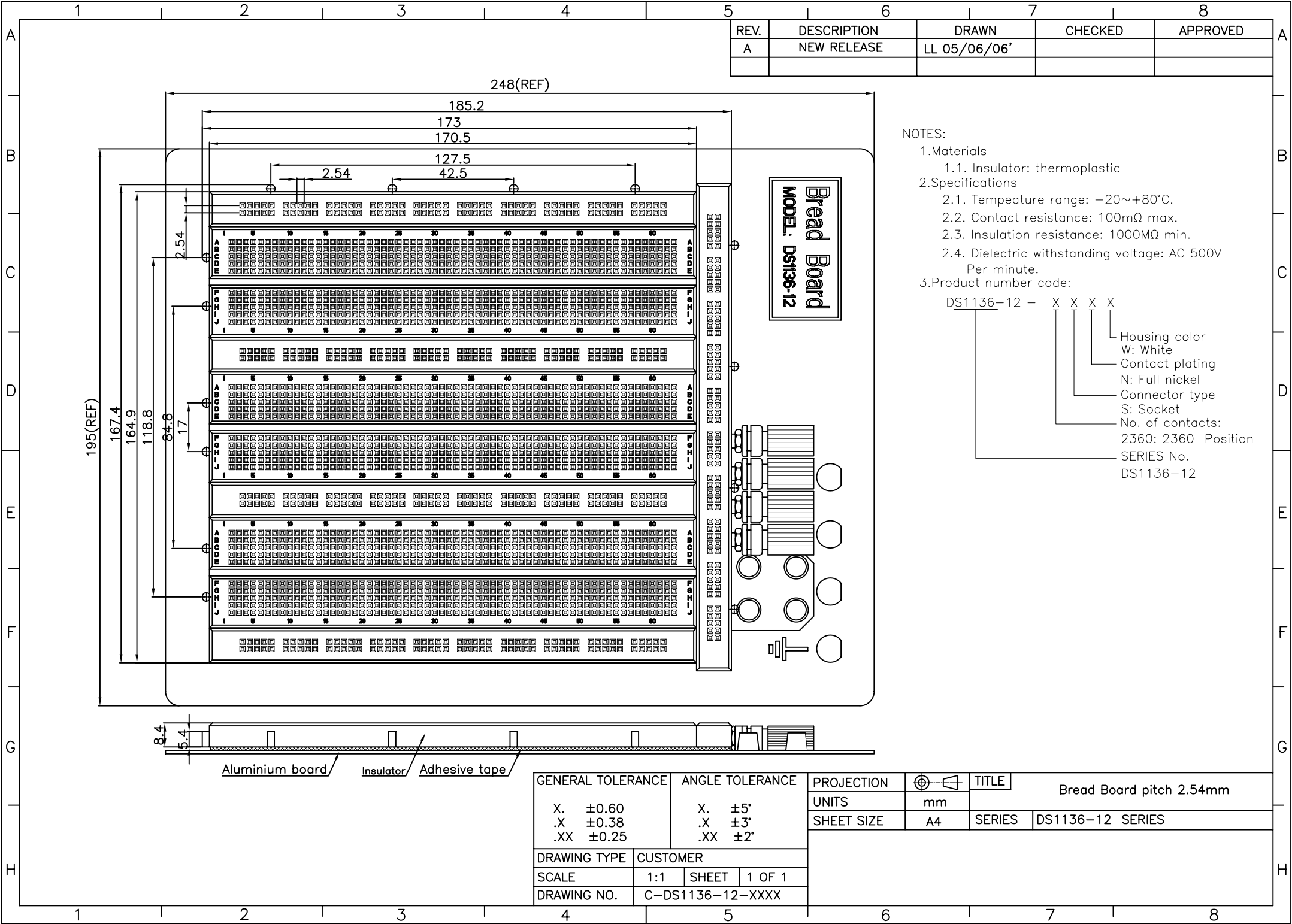


REV.	DESCRIPTION	DRAWN	CHECKED	APPROVED
A	NEW RELEASE	LL 05/06/06'		

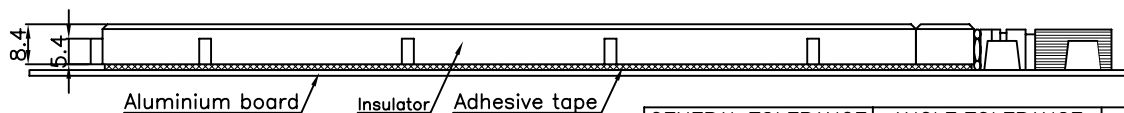


- NOTES:
- Materials
 - 1.1. Insulator: thermoplastic
 - Specifications
 - 2.1. Temperature range: $-20\sim+80^{\circ}\text{C}$.
 - 2.2. Contact resistance: $100\text{m}\Omega$ max.
 - 2.3. Insulation resistance: $1000\text{M}\Omega$ min.
 - 2.4. Dielectric withstanding voltage: AC 500V Per minute.
 - Product number code:

DS1136-12 - X X X X

 - X: Housing color (W: White)
 - X: Contact plating (N: Full nickel)
 - X: Connector type (S: Socket)
 - X: No. of contacts (2360: 2360 Position)

SERIES No. DS1136-12



GENERAL TOLERANCE		ANGLE TOLERANCE		PROJECTION	TITLE
X. ± 0.60	.X ± 0.38	.X $\pm 5^{\circ}$.X $\pm 3^{\circ}$	mm	
.XX ± 0.25		.XX $\pm 2^{\circ}$		A4	Bread Board pitch 2.54mm
DRAWING TYPE		CUSTOMER		SHEET SIZE	SERIES DS1136-12 SERIES
SCALE	1:1	SHEET	1 OF 1		
DRAWING NO.	C-DS1136-12-XXXX				