

REVISION		
POSITION	DESCRIPTION	DATE
△	Add Dimension	2007-08-29

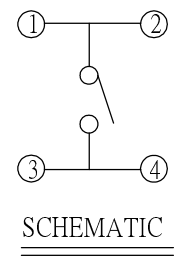
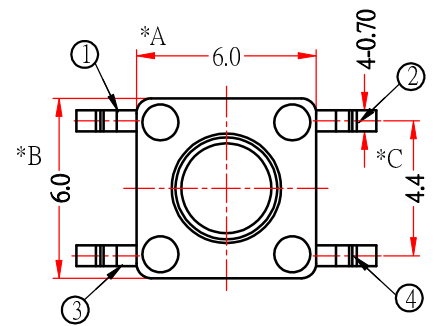


Table 1: stem height

L= (height)		
	A	4.3mm
	B	5.0mm
	C	7.0mm
	D	9.5mm
	E	13.0mm
	7.3	7.3mm
	8	8.0mm
	9	9.0mm
	12.5	12.5mm
	13.5	13.5mm
	17	17.0mm

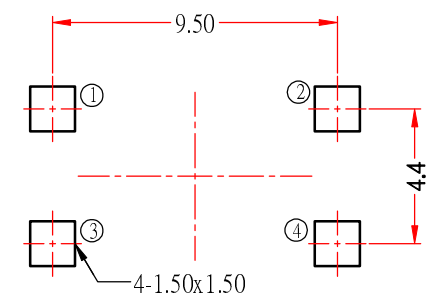
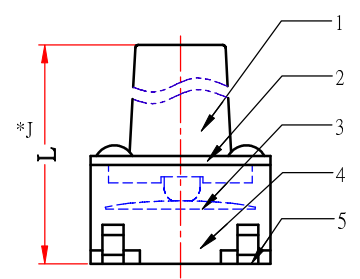
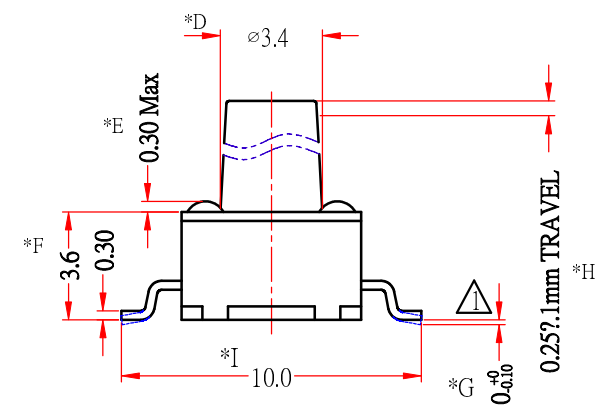
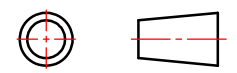


Table 2: operating force

F= (force)		
	I	100gf
	L	130gf
	S	160gf
	H	250gf

\*CRITICAL DIMENSION

CHI FUNG ELECTRONICS CO.,LTD.



SERIES :TACT SWITCH		DRAWING NO:	CF-ENL-TS4368
PART NAME: TS-06M-LFM-T (10.0mm)		GENERAL TOLERANCE	
UNIT : M M	DWN.	WITHIN 0.XXmm?.15mm OVER 0.Xmm?.25mm	
SCALE : 5:1	CHK'D		
REV : A/1	APPD.		

NO.	PART NAME	MATERIAL	QTY	FINISHING
7				
6				
5	TERMINAL	BRASS STRIP	4	Ag COATING
4	CASE	PA6T	1	BLACK
3	CONTACT	C5210R-EH	1	Ag CLAD
2	COVER	SPN STRIP	1	Ni COATING
1	STEM	PA6T	1	BLACK