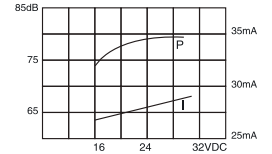
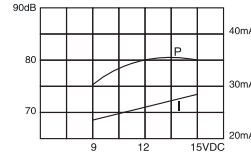
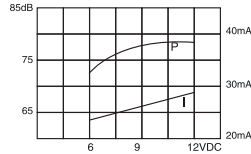
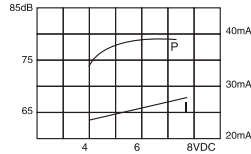
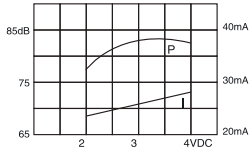
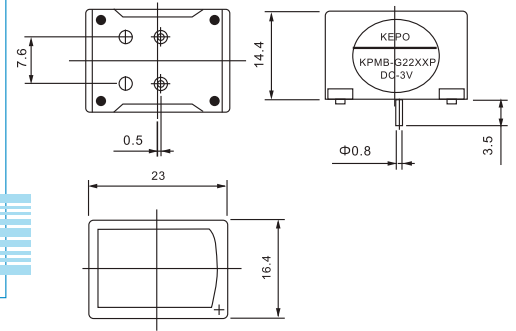
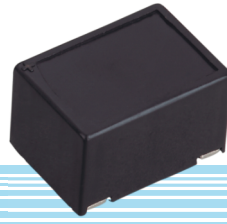


■ ■ ■ KPMB-G22XXP SERIES MECHANICAL BUZZER

DIMENSIONS

color Black
ABS Housing Material
Pin Terminal



Model No	KPMB-G2203P	KPMB-G2206P	KPMB-G2209P	KPMB-G2212P	KPMB-G2224P
Rated Voltage	3VDC	6VDC	9VDC	12VDC	24VDC
Operating Voltage	2~4VDC	4~8VDC	6~12VDC	9~15VDC	15~27VDC
Max Rated Current	30mA				
Min.Sound Pressure Level	75dB/3VDC/20cm	75dB/6VDC/20cm	75dB/9VDC/20cm	75dB/12VDC/20cm	75dB/24VDC/20cm
Resonant Frequency	400 ± 100Hz				
Operating Temperature	-20~+60°C				
Storage Temperature	-30~+70°C				
Weight	10g				

RoHS
Compliant