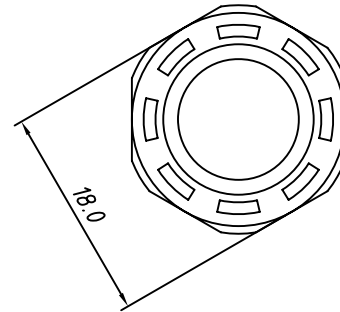
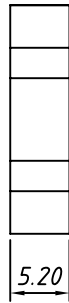
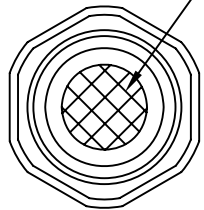


Nut



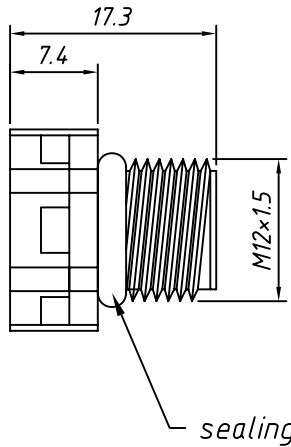
Material

Nut and Body Material: PC
 Film: EPTFE
 Sealing: NBR, EPDM
 IP rating: IP67
 Thread: M12×1.5
 Panel Mounting: Ø12 or M12×1.5
 Temp. Range: -40 °C ~ +125 °C
 breathable valve Range: 1300ml/minute
 Maximum torque: 10Kgf.cm Max.

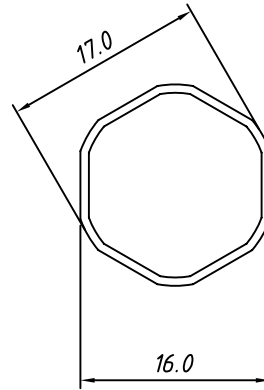


body

Film



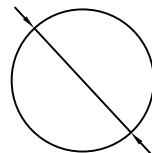
sealing



Order Information


L-KLS8-VA02 M1201-x 0

- Nut: 0- With Nut
1- Without Nut
- Color: 1- Black
2- White Gray
3- Dark Gray
4- transparent
- Thread code
- Waterproof breathable valve
- RoHS



Ø12 or M12×1.5

Panel Mounting
hole diameter

GENERAL TOLERANCE		ANGLE TOLERANCE		Description:	
X.	±0.60	X.	±5°	M12×1.5 waterproof breathable valve	
.X	±0.38	.X	±3°		
.XX	±0.25	.XX	±2°		
Draw		2018-01-20	PROJECTION	⊕	 NingBo KLS ELECTRONIC CO.,L TD.
Check		2018-01-20	UNITS	mm	
SCALE			SHEET SIZE	A4	