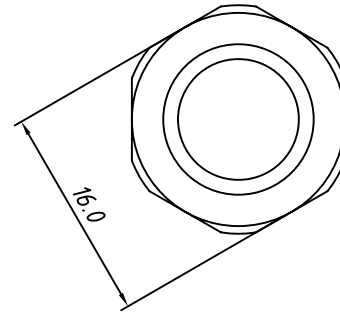
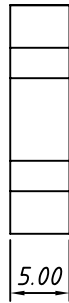
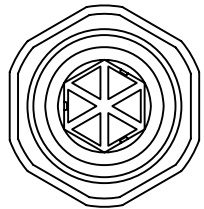


Nut

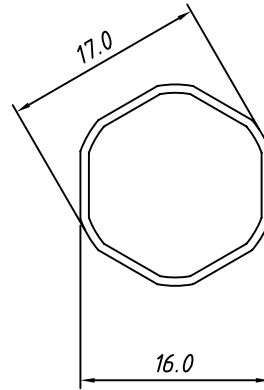
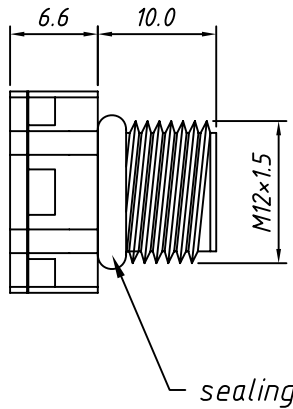


Material

Nut and Body Material: PC
Film: EPTFE
Sealing: NBR, EPDM
IP rating: IP67
Thread: M12×1.5
Panel Mounting: Ø12 or M12×1.5
Temp. Range: -40 °C ~ +110 °C
breathable valve Range: 3500ml/minute Max.
Maximum torque: 8Kgf.cm Max.



body



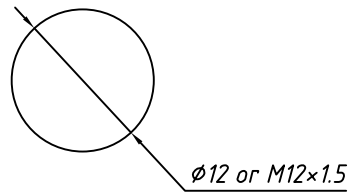
Order Information

L-KLS8-VA02 M1202-x 0


Nut: 0- With Nut
 1- Without Nut

Color: 1- Black
 2- White Gray

Thread code
 Waterproof breathable valve
 RoHS



Panel Mounting
hole diameter

GENERAL TOLERANCE		ANGLE TOLERANCE		Description:	
X.	±0.60	X.	±5°	M12×1.5 waterproof breathable valve	
.X	±0.38	.X	±3°		
.XX	±0.25	.XX	±2°		
Draw		2018-01-20	PROJECTION	KLS P/N:	KLS8-VA02M1202-x0
Check		2018-01-20	UNITS	 NingBo KLS ELECTRONIC CO.,L TD.	
SCALE			SHEET SIZE		