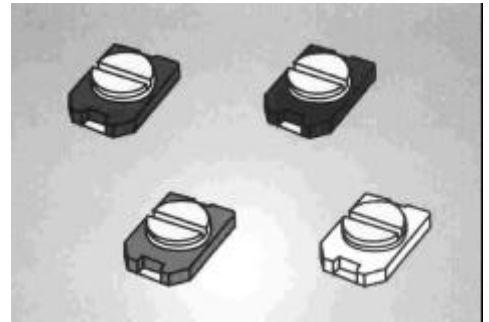


Ceramic Trimmer Capacitors, Series KCVS3, have been developed for higher density surface mounting in electronic devices, and is suited to miniature, low profile capacitors with many useful features.

**Features**

- ✦ Miniature and low profile capacitors with external deminsions of 3.2(W) x 4.5(L) x 1.7(H)mm.
- ✦ Color-coded case according to its capacitance range for easy visual identification
- ✦ Mountable by an automatic placer.
- ✦ Reflow soldering applicable.
- ✦ Easy adjustment using a conventional screwdriver



**Parts Numbering**

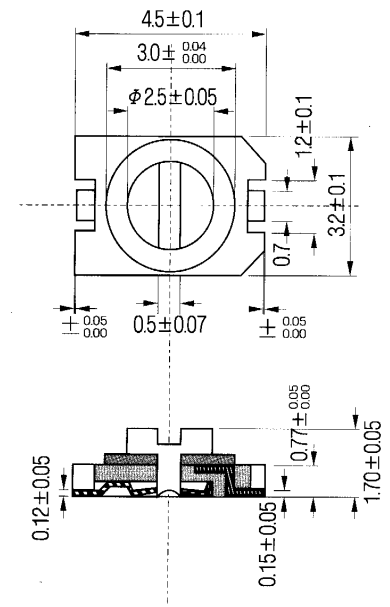
K C V S 3    X X    X    X X X  
 1                    2                    3                    4

1. Chip Ceramic Trimmer Capacitor
2. Capacitance
3. Terminal type : A type only (standard)
4. Packing unit
  - K00: 180mm dia. Reel taping (1,000pcs / reel)
  - K03: 330mm dia. Reel taping (3,000pcs / reel)
  - NO Code: Bulk (500pcs / bag)

**Specifications**

- ✦ Operating temperature range: -25° C ~ +85° C
- ✦ Rated working voltage: 100V DC
- ✦ Dielectric withstanding voltage: 220V DC
- ✦ Insulation Resistance: 10<sup>4</sup>M ohm min.
- ✦ Rotation torque: 15~100g. cm

**Dimensions**

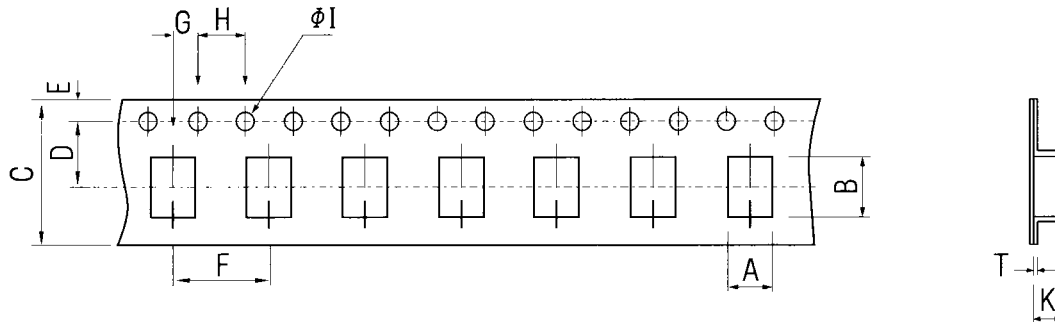


**Ratings**

Part Number	Capacitance (pF)		Temperature Coefficient (ppm/°C)	Q(1MHz, Cmax) (min.)	Case Color
	Min.(+0%)	Max (+100% - 0%)			
KCVS303 XXXX	1.7	3.0	NPO±300	300	Blue
KCVS306 XXXX	2.5	6.0	NPO±300	500	Blue
KCVS310 XXXX	3.5	10.0	N750±300	500	White
KCVS320 XXXX	5.5	20.0	N1200±500	300	Red
KCVS330 XXXX	7.5	30.0	N1600±500	300	Green

**Dimensions of plastic taping**

Carrier Tape



(Unit: mm)

A	B	C	D	E	F	G	H	K	T	I
3.6±0.1	4.9±0.1	12.0±0.3	5.5±0.1	1.75±0.1	8.0±0.1	2.0±0.1	4.0±0.1	2.3±0.1	0.3±0.05	1.5±0.1

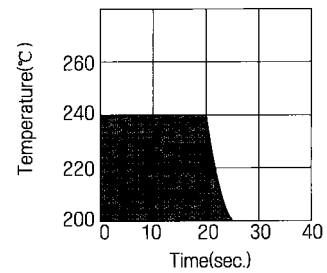
**Soldering Conditions**

✦ Soldering temperature and time

Solder with the range indicated the slanted line.

If soldering is repeated, please note that the allowed time is the accumulated time.

**Reflow Solder**



**Standard soldering conditions**

**Reflow Solder**

