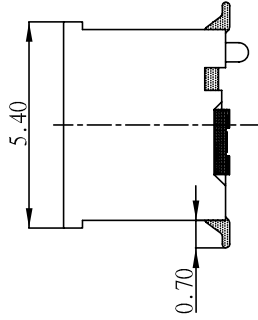
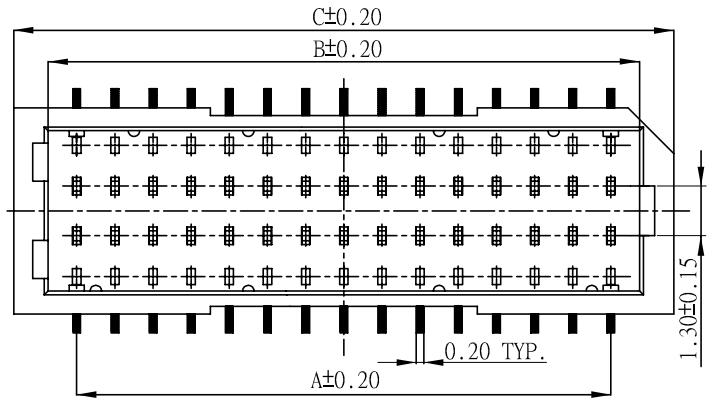


SPECIFICATION

- Voltage Rating: 50V AC/DC
- Current Rating: 1A AC/DC
- Withstanding Voltage: 500V AC/minute
- Insulation Resistance : 100M Ω min
- Temperature Range: -25°C to +85°C
- Contact Resistance: 20m Ω max.

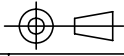
FEATURES:

- Part No: 100G1-2MVXX
- Part No:100G1-2MV(WB)
- Poles: 10X2 -- 25X2
- Material: Contact: Phos. Bronze, Tin Plated
- Base: Nylon 9T UL94V-0
- Q'ty: 1000pcs/Tape & Reel



| Poles | Part No. | Dimensions | | |
|-------|-------------|------------|-------|-------|
| | 100G1-2MVXX | A | B | C |
| 20 | 100G1-2MV20 | 9.00 | 11.50 | 12.30 |
| 30 | 100G1-2MV30 | 14.00 | 16.50 | 17.30 |
| 40 | 100G1-2MV40 | 19.00 | 21.50 | 22.30 |
| 50 | 100G1-2MV50 | 24.00 | 26.50 | 27.30 |

100G1-2MVXX
With Metal Titting Without Boss

| | | | | | |
|--------------------------------|------------------|--------------------|--|--|-----------------------------------|
| Rev | Description/Date | Drawn By: Storm.li | Customer: | Third angle projection  | X.± .X±0.3 .XX±0.1 .XXX± |
| △ | | Checked By:Simmon | Part No.: 100G1-2MVXX | | |
| △ | | Approved By: Tony | Title: 1.00 mm Wire to Board Wafer SMT 180° Type | | |
| SGS Report No.: CE/2005/63612D | | | | | |