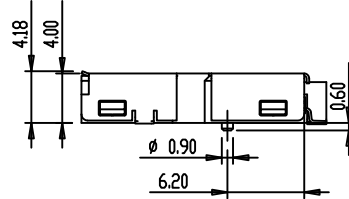
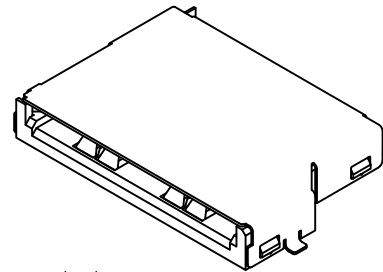


NOTES :

1. MATERIAL :
 INSULATOR : HIGH TEMPERATURE
 THERMOPLASTIC , UL94V-0. COLOR : BLACK

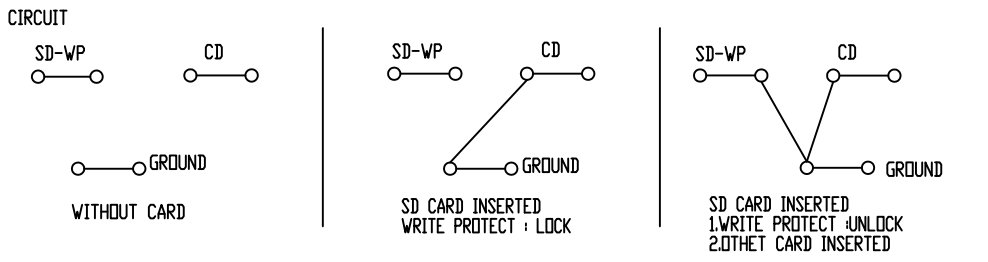
CONTACT : PHOSPHOR BRONZE.

PLATING :
 CONTACT AREA : 10u" Au Plated OVER Ni
 SOLDER AREA : Tin Plated OVER Ni



107M-I A A 0-R01
 1 2 3 4

- 1.Type
T:Top Mount
- 2.Contact Plating
A:10u"Gold Plating
- 3.Stand Off
A:0mm
- 4.RoHS



UNLESS OTHERWISE SPECIFIED TOLERANCE		
ANGLES	ANG.	±5°
LINEAR	0.	±0.3
	0.0	±0.25
	0.00	±0.20
SCALE	AS SHOWN	UNIT: mm
DRAWN	Willis	2012/08/03
CHECKED	Angel	2012/08/03
APPROVED	Ken	2012/08/03

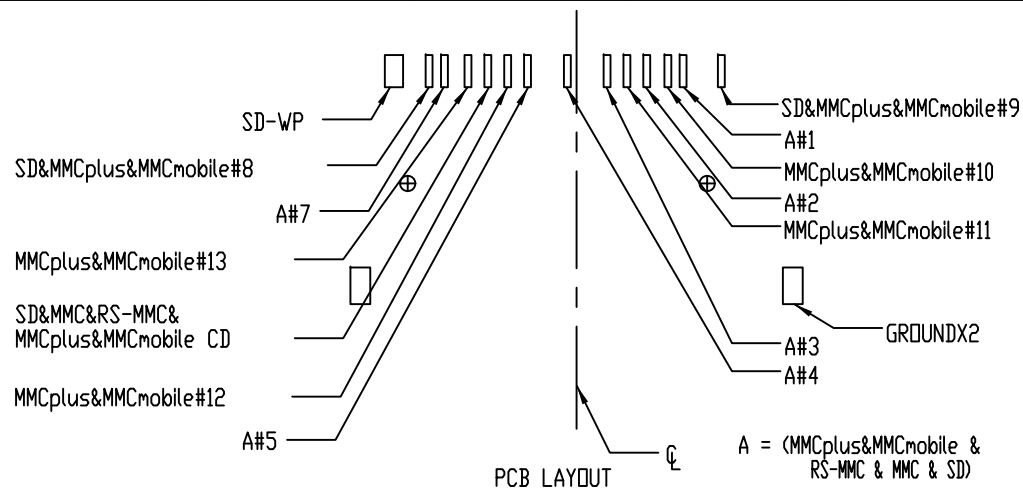


REV.	DESCRIPTION	DATE	REV.	DESCRIPTION	DATE

DRAWN NAME:
Multi Card 5 in 1 Socket
SD/MMC/MMC Plug4.0/MMC Mobile4.0

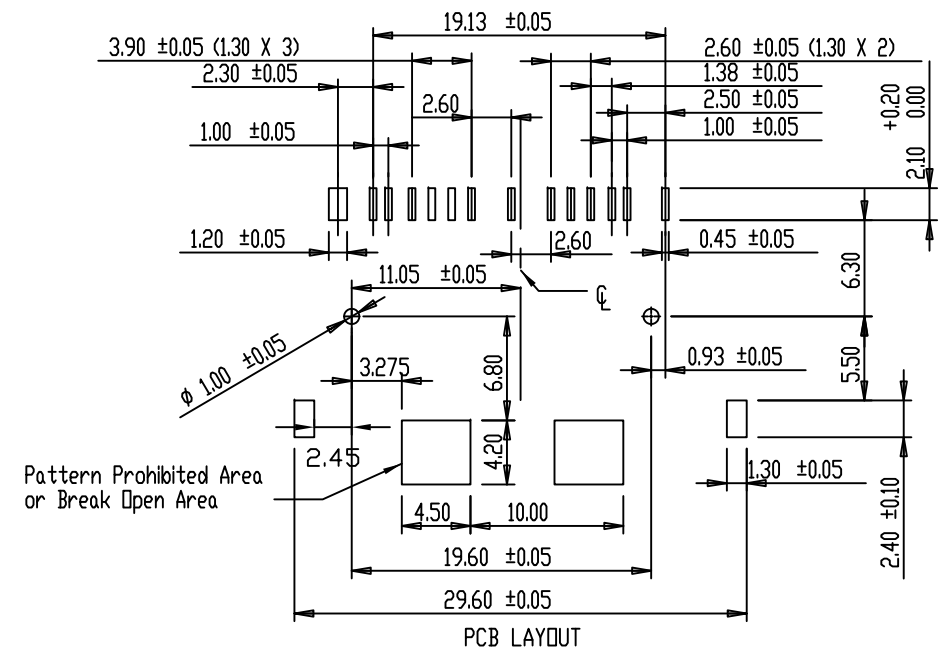
PRODUCT NO. 107M-TAA0-R01

FILE NAME 107M-TAA0-R01_B_2



PIN ASSIGNMENT

MMCplus&MMCmobile&MMC&RS-MMC&SD#1	(RSV/DAT3)
MMCplus&MMCmobile&MMC&RS-MMC&SD#2	(CMD)
MMCplus&MMCmobile&MMC&RS-MMC&SD#3	(GND)
MMCplus&MMCmobile&MMC&RS-MMC&SD#4	(VCC)
MMCplus&MMCmobile&MMC&RS-MMC&SD#5	(CLK)
MMCplus&MMCmobile&MMC&RS-MMC&SD#7	(DAT0)
MMCplus&MMCmobile&SD#8	(DAT1)
MMCplus&MMCmobile&SD#9	(DAT2)
MMCplus&MMCmobile#10	(DAT4)
MMCplus&MMCmobile#11	(DAT5)
MMCplus&MMCmobile#12	(DAT6)
MMCplus&MMCmobile#13	(DAT7)



						UNLESS OTHERWISE SPECIFIED TOLERANCE				
						ANGLES	ANG.	±5°		
						LINEAR	0.	±0.3		
							0.00	±0.25		
						SCALE	AS SHOWN	UNIT: mm		
						DRAWN	Willis	2012/08/03	DRAWN NAME: Multi Card 5 in 1 Socket	
						CHECKED	Angel	2012/08/03	SD/MMC/MMC Plug4.0/MMC Mobbile4.0	
						APPROVED	Ken	2012/08/03	PRODUCT NO.	107M-TAA0-R01
REV.	DESCRIPTION		DATE	REV.	DESCRIPTION		DATE	SIZE	REV.	FILE NAME
1				4				A4	1.0	107M-TAA0-R01_B_2