

Engineering Change Notice

Date: 1st Jun, 2014





Issue Date	1st Jun, 2014
Object	End of Life (EOL) Notification
Category	119A series – Mini PCI Express Connector
Regular Product NO.	119A-40A00-R02, 119A-56A00-R02
New Product No.	119A-40A00-R04, 119A-56A00-R04
Purpose	To optimize & get better dimensional stability
Difference	Allow larger inserting angle & entry space to lower friction by manual
Technical Effect	100% pin to pin due to same PCB layout

To each of ATTEND customers & partners,
 It's pleased to announce you, our mini PCI Express connector, 119A-40A00-R02 & 119A-56A00-R02 are under EOL plans, and would be replaced by new version R04 by running change within 6 months from now on.

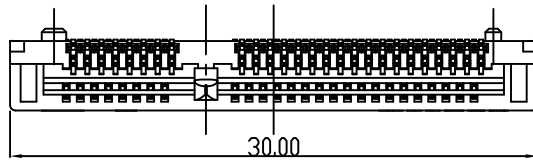
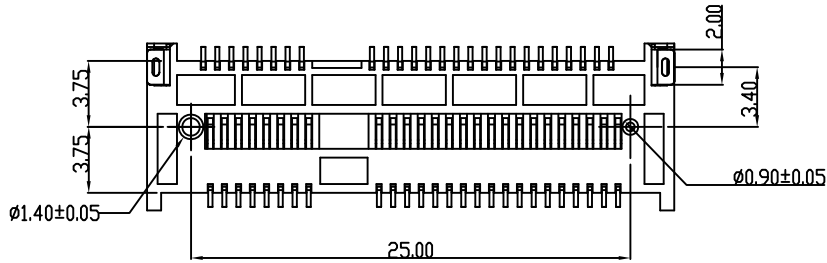
All of our sales people, including our distributors, would help you out in related re-approval with our samples and documents.

In order to fulfill your lead time request & expectation, please have a good understanding and collaboration for using our latest version of sockets above in your new projects or running change for current ongoing MP projects.

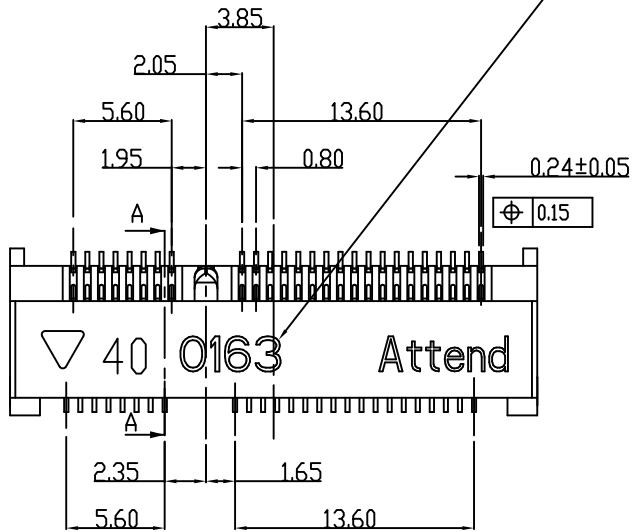
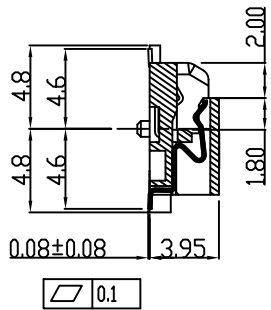
Thanks for your cooperation in advance.

			
G.M.	Marketing Dept	SCM Manager	Product Manager

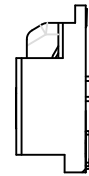




SECTION A-A



DATE CODE: 0163 (YWW)
 Y: 0 YEAR(2010)
 WW:16 WEEK(01~52)
 D: 3 DAY(01~07)



PRODUCT NO.	ITEM	PART NAME	Q'TY	MATERIAL	PLATING
119A-40A00-R02	1	BODY	1	LCP	
	2	CONTACT	52	PHOSPHOR BRONZE	GOLD 1u"
	3	HOLD DOWN	2	BRASS	TIN 100u"

Material
 Plastic Body : LCP, Color Black.
 Contact : Phosphor Bronze Alloy (C5191R-H)
 Contacts Plating: Contact area: Gold Plated
 Solder area: Tin
 Hold Down : Brass(C2680R-H)
 Hold Down Plating: Tin

Electrical:
 Rating Current: 0.5A(Max.)/(1PIN)
 Rating Voltage: 50V AC
 Contact Resistance: 30 mΩ (Max)
 Insulation Resistance: 500 MΩ (Min.)

Mechanical:
 Contact Normal Force: 50 gf per pin (Min.)
 Durability: 100 mating and unmating cycles

Environmental:
 Operating Temperature: -40°C to +90°C
 Storage Temperature: -40°C to +90°C
 Solder ability: 260±5°C

PRODUCT NUMBER:
 119A-40 A 0 0-R02
 1 2 3 4

- Stand off
40: 4.0mm
- Contact plating
A: gold flash
- Color
0: black
- RoHS

UNLESS OTHERWISE SPECIFIED TOLERANCE		
ANGLES	ANG.	±5°
LINEAR	0.	±0.3
	0.0	±0.25
	0.00	±0.20
SCALE	AS SHOWN	UNIT: mm
DRAWN	Willis	2012/08/03
CHECKED	Angel	2012/08/03
APPROVED	Ken	2012/08/03



www.attend.com.tw

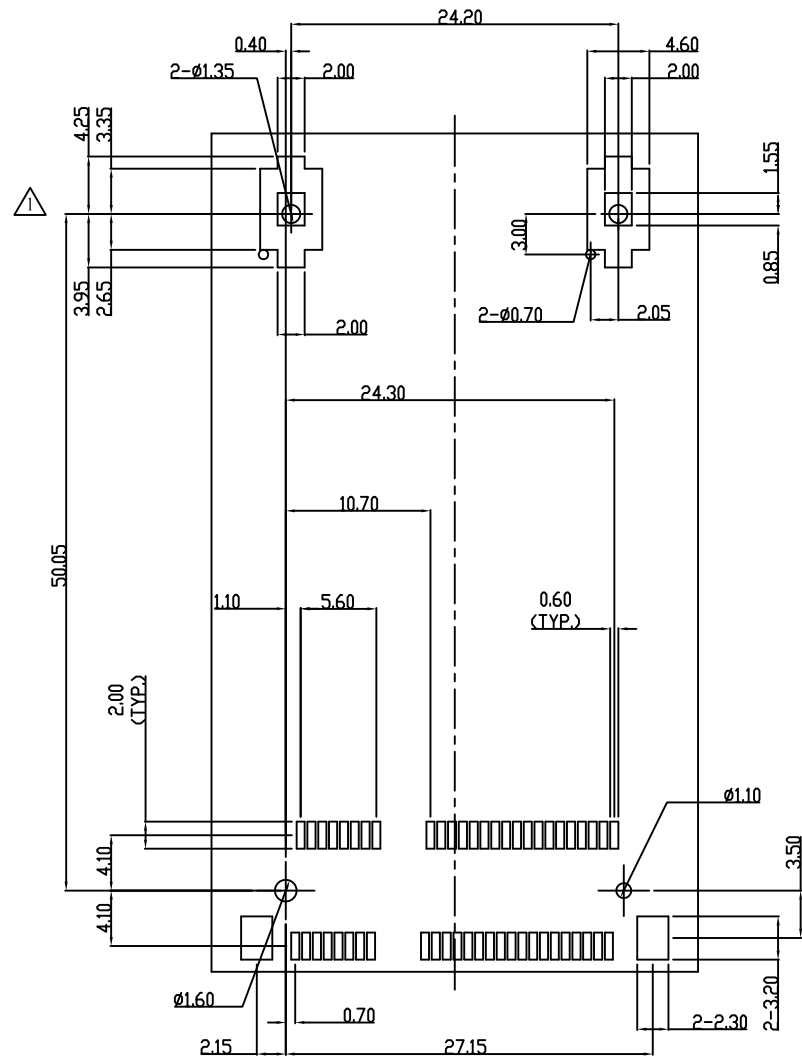
DRAWN NAME:
Mini PCI Express Socket H:4.0mm

PRODUCT NO. 119A-40A00-R02
 FILE NAME 119A-40A00-R02_B_4

REV.	DESCRIPTION	DATE	REV.	DESCRIPTION	DATE
3	Revise:				
2	Revise: Date Code	2010/04/30			
1	Revise: Latch Layout	2010/01/15			

A

A



RECOMMEND PC BOARD LAYOUT
GENERAL TOLERANCE: ±0.05mm

UNLESS OTHERWISE SPECIFIED TOLERANCE		
ANGLES	ANG.	±5°
LINEAR	0.	±0.3
	0.0	±0.25
	0.00	±0.20
SCALE	AS SHOWN	UNIT: mm
DRAWN	Willis	2012/08/03
CHECKED	Angel	2012/08/03
APPROVED	Ken	2012/08/03

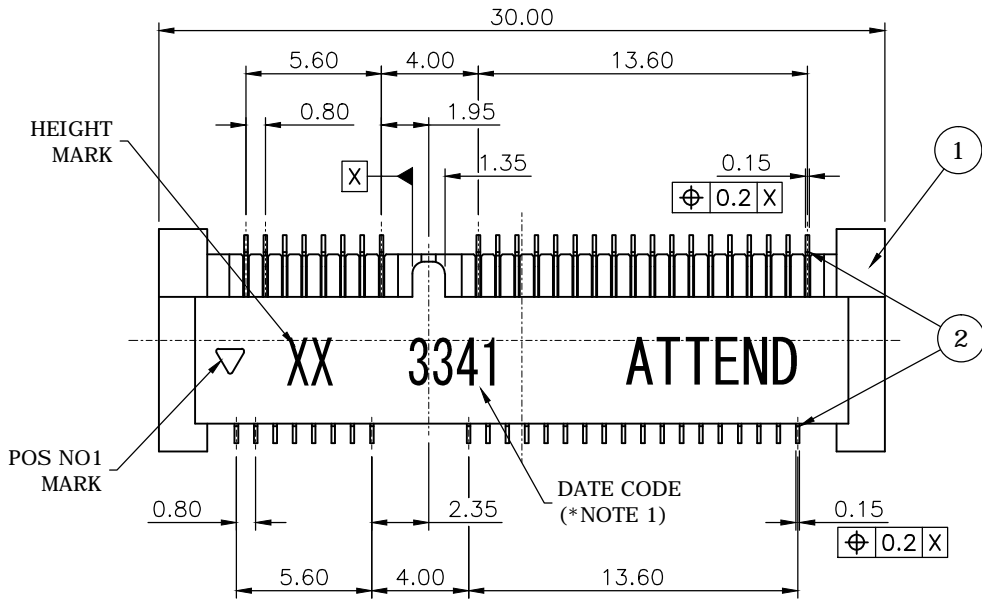
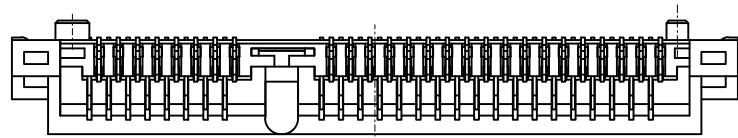


www.attend.com.tw

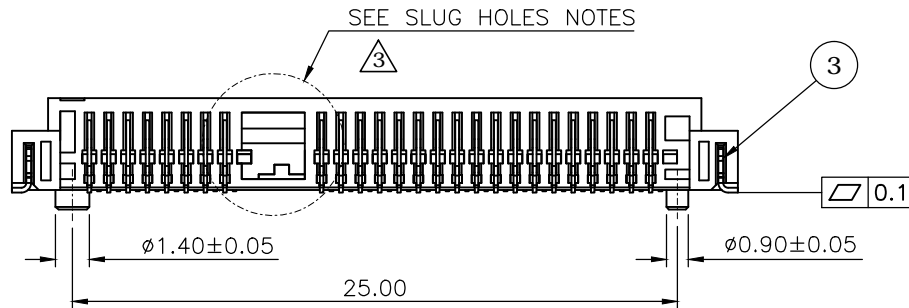
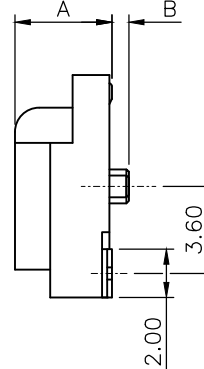
REV.	DESCRIPTION	DATE	REV.	DESCRIPTION	DATE
3	Revise:				
2	Revise: Date Code	2010/04/30			
1	Revise: Latch Layout	2010/01/15			

DRAWN NAME:		Mini PCI Express Socket H:4.0mm	
PRODUCT NO.	119A-40A00-R02	FILE NAME	119A-40A00-R02_B_4

SIZE A4 REV. 1.0



*SEE TABLE



NO.	DESCRIPTION	DRAWN	DATE
1	INITIAL RELEASE	FROS	2014/12/12
2	ADD PACKING & DIMENSIONS TABLE	FROS	2014/12/19
3	ADD PAGE 4, SLUG HOLE NOTES	FROS	2015/08/11


SPECIFICATION:

1. ELECTRICAL
 - 1.1 Current Rating: 0.5A per pin
 - 1.2 Voltage Rating: 50V DC
 - 1.3 Contact Resistance: 55mΩ Max
 - 1.4 Insulation Resistance: 500MΩ Min
 - 1.5 Dielectric Withstanding Voltage: 300VAC
2. MECHANICAL
 - 2.1 Durability: 100 Cycle
 - 2.2 Insertion Force: 2.3Kgf max.
 - 2.3 Extraction Force: 2.3Kgf max.
3. ENVIRONMENTAL
 - 3.1 Operating temperature range: -40°C~+85°C
 - 3.2 Storage temperature range: -40°C~+85°C
4. SOLDER ABILITY
 - 4.1 Recommended IR Reflow Temperature: 260°C 10Sec

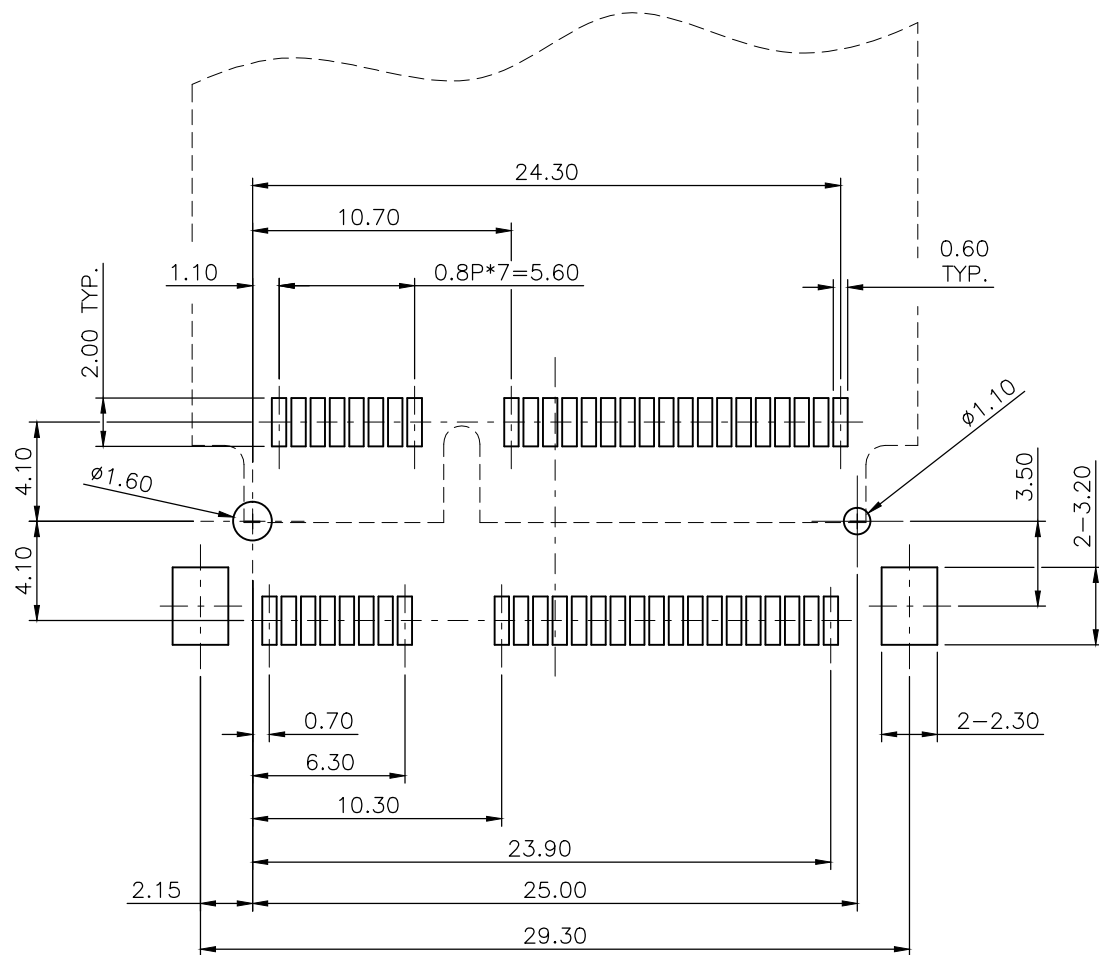
DIMENSIONS TABLE		
A	B	P/N
4.0	0.7	119A-40A00-R04
5.6	0.5	119A-56A00-R04

NOTE: 1
 DATE CODE: 3 3 4 1
 YEAR 2013 DAY 1 AT WEEK
 WEEK 34

3	HOLDDOWN	Brass C2680, Tin Plated
2	CONTACT	Phosphor Bronze C5210, Contact Area: Gold Flash Over Nickel
1	HOUSING	LCP UL94V-0, Black

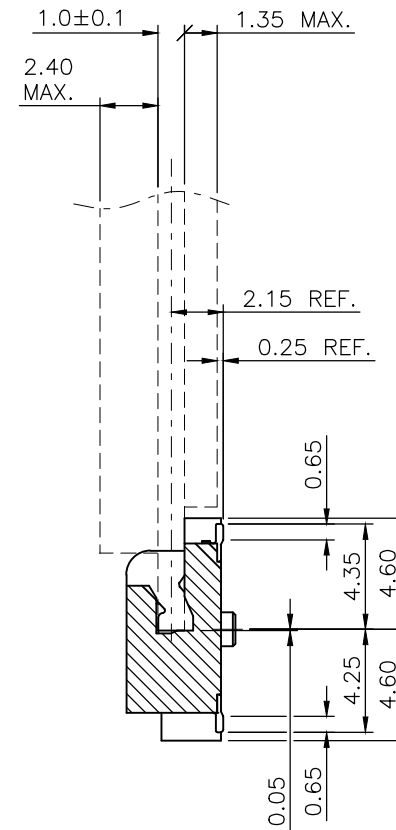
NO. PART NAME		DESCRIPTION		
UNLESS OTHERWISE SPECIFIED TOLERANCE				
UNIT:	DECIMAL	LINEAR	ANGLES	
	X.	±0.50	±5°	
	X.X	±0.25	±3°	
	X.XX	±0.12	±1°	
 WWW.ATTEND.COM.TW				
DRAWN	Fros	2014/12/12	DRAWN NAME: Mini PCI Express Socket H:X.Xmm	
CHECKED	Ron	2014/12/12		
APPROVED	Albert	2014/12/12		
SCALE 3.2		SHEET 1/4	SIZE A4	PRODUCT NO. SEE P/N TABLE
FILE NAME		119A-XXA00-R04_B_3		

NO.	DESCRIPTION	DRAWN	DATE
	SEE SHEE 1		


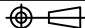


RECOMMEND PCB LAYOUT, TOP VIEW

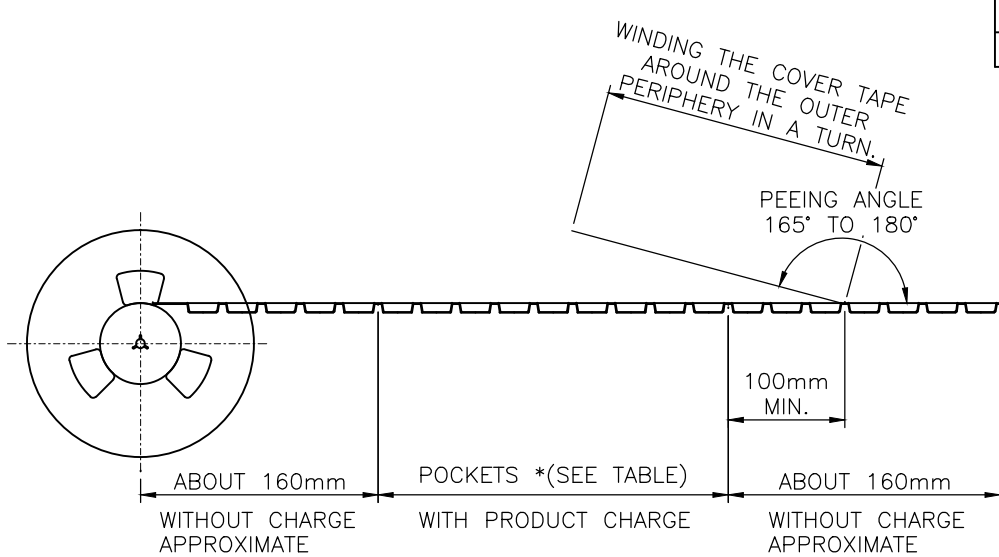
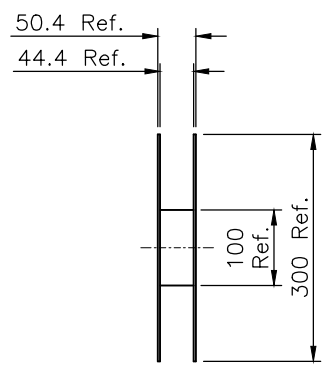
----- IS CARD
 _____ IS PAD LAYOUT



GENERAL TOLERANCE: ±0.05

UNLESS OTHERWISE SPECIFIED TOLERANCE				 ATTEND WWW.ATTEND.COM.TW
UNIT:	DECIMAL	LINEAR	ANGLES	
mm	X.	±0.50	±5°	
	X.X	±0.25	±3°	
	X.XX	±0.12	±1°	
DRAWN	Fros	2014/12/12	DRAWN NAME:	
CHECKED	Ron	2014/12/12	Mini PCI Express Socket H:X.Xmm	
APPROVED	Albert	2014/12/12	PRODUCT NO.	SEE P/N TABLE
	SCALE 3.2	SHEET 2/4	SIZE A4	FILE NAME 119A-XXA00-R04_B_3

NO.	DESCRIPTION	DRAWN	DATE
	SEE SHEE 1		

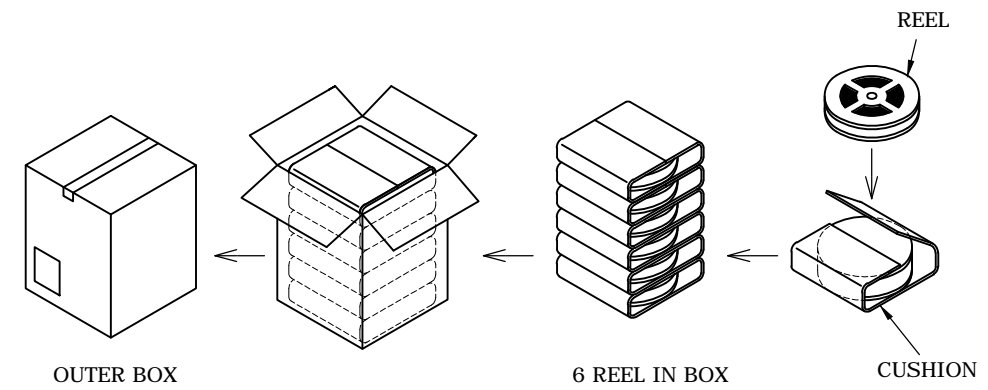
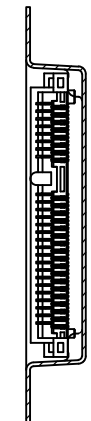
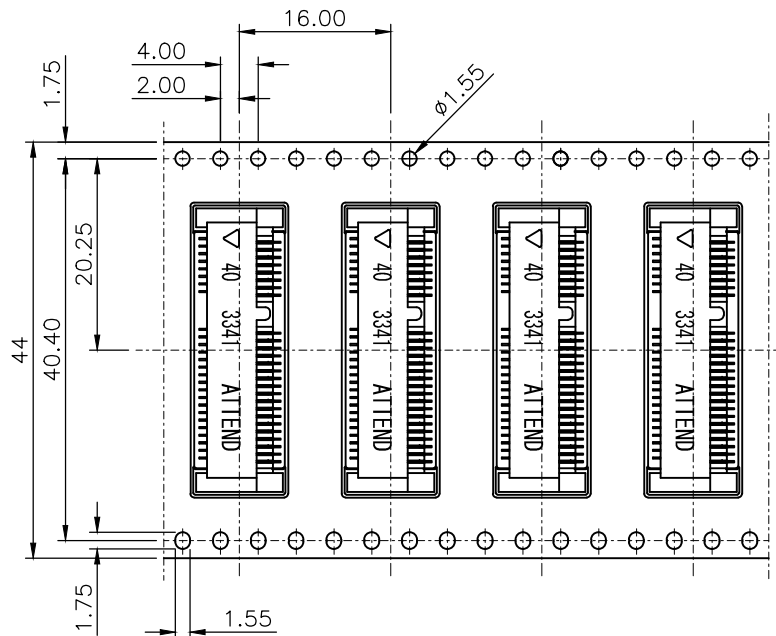


NOTE:

1. PEELING RESISTANCE: 0.1N~0.13N (10gf~130gf)
PEELING ANGLE: 165°~180°
PEELING SPEED: 300mm/min.
2. PACKING STYLE
6 REEL/CARTON

PACKING TABLE		
P/N	Q'TY/ REEL	Q'TY/ CARTON
119A-40A00-R04	700 PCS	4,200 PCS
119A-56A00-R04	550 PCS	3,300 PCS

REEL DIMENSIONS
SCALE 1/10



BOX PACKING

C	P/N
6.30	119A-40A00-R04
7.90	119A-56A00-R04

UNLESS OTHERWISE SPECIFIED TOLERANCE			
UNIT:	DECIMAL	LINEAR	ANGLES
mm	X.	±0.50	±5°
	X.X	±0.25	±3°
	X.XX	±0.12	±1°



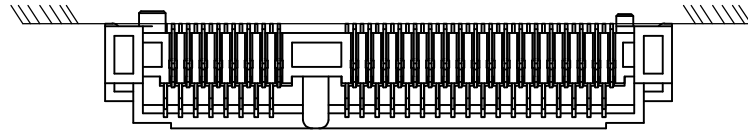
WWW.ATTEND.COM.TW

DRAWN	Fros	2014/12/12	DRAWN NAME: Mini PCI Express Socket H:X.Xmm				
CHECKED	Ron	2014/12/12					
APPROVED	Albert	2014/12/12	PRODUCT NO. SEE P/N TABLE				
SCALE	1.25	SHEET	3/4	SIZE	A4	FILE NAME	119A-XXA00-R04_B_3

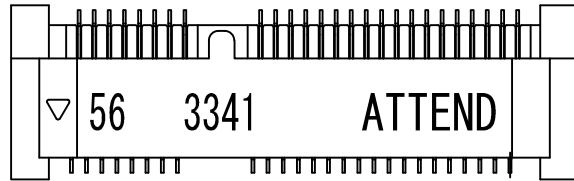
*SEE TABLE

NO.	DESCRIPTION	DRAWN	DATE
	see sheet one		

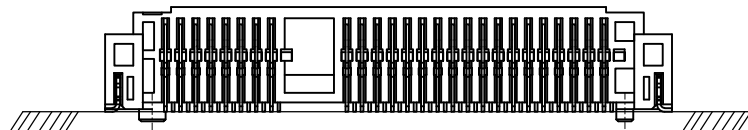
119A-56A00-R04



FRONT SIDE

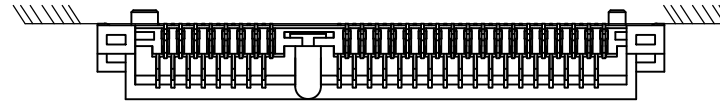


TOP VIEW

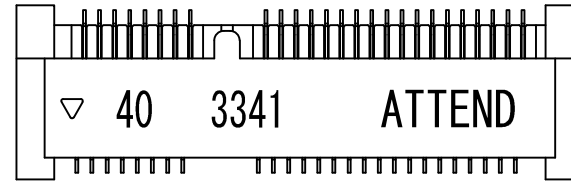


BACK SIDE

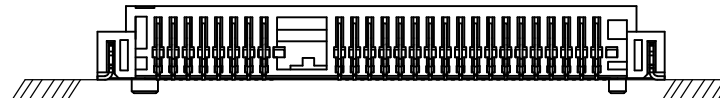
119A-40A00-R04



FRONT SIDE



TOP VIEW



BACK SIDE

SLUG HOLE NOTES

UNLESS OTHERWISE SPECIFIED TOLERANCE			
UNIT:	DECIMAL	LINEAR	ANGLES
mm	X.	±0.50	±5°
	X.X	±0.25	±3°
	X.XX	±0.12	±1°
DRAWN	Fros	2014/12/12	DRAWN NAME: Mini PCI Express Socket H:X.Xmm
CHECKED	Ron	2014/12/12	
APPROVED	Albert	2014/12/12	PRODUCT NO. SEE P/N TABLE
	SCALE 2.5	SHEET 4/4	SIZE A4
FILE NAME		119A-XXA00-R04_B_3	



WWW.ATTEND.COM.TW

