

系列类别码 AS - T X X X XX - XXX XX X - 02 - 09 - 1134

端子 M=公座 F=母座 G=1.0 I=1.27*1.27 L=2.0 N=2.54 P=3.96 R=5.08 Z=其他 (散装端子) B=0.8

未加工型態 X=1 X=2 X=3 X=4 参照附表1

端子长度 XXX=001 XXX=002 XXX=003 流水码 001~999

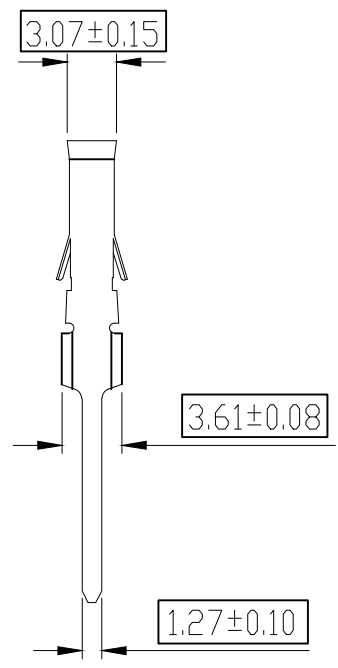
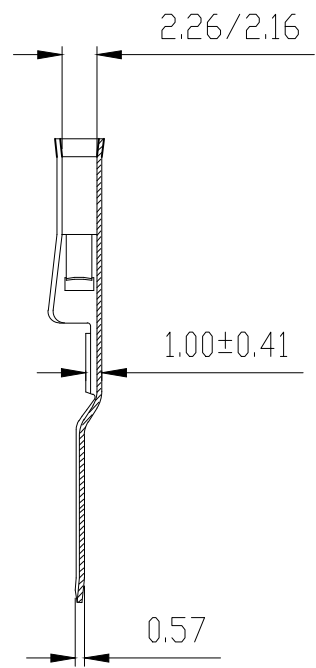
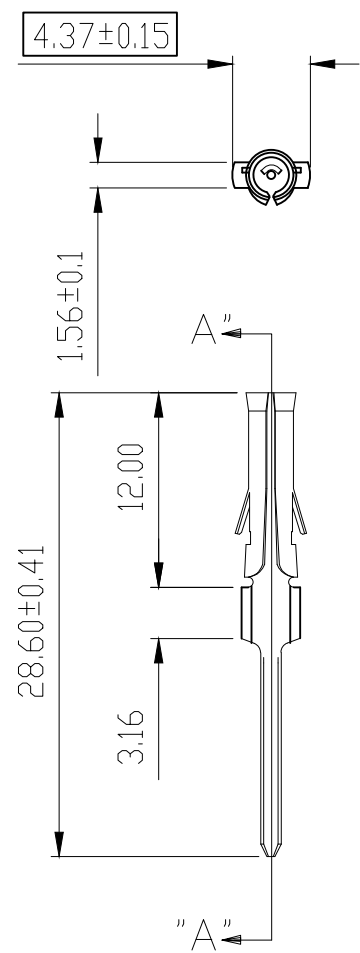
电镀码 01=Gold flash 02=Gold 30" 03=Gold 100" 04=Gold 150" 05=Gold 200" 11=Matte Tin 12=Plating tin

端子材质 B=Brass P=Phone Bronze E=镀铜

流水码 01~99

端子针长 尺寸变化 详参端子 图面

06=Gold 0.80" 07=Gold 15" 08=Gold 50" 09=Gold XX" 10=Gold 管脚" 51=Gold/Tin 52=Gold 30"/Tin 53=Gold 100"/Tin 54=Gold 150"/Tin 55=Gold 200"/Tin XX>Select Plating



SECT. "A-A"

备注:

1. 材质: C2680, 料厚: 0.30 ± 0.01 mm;
2. 电镀: 50u"镍底, 镀雾锡100u"。

GENERAL TOLERANCE	ANGLE TOLERANCE	DESIGN DATE	FILE NAME (品名)	
X. ±0.4 .X ±0.30 .XX ±0.20 .XXX ±	X' ±10° .X' ±5° .XX' ±1° .XXX' ±	Jock 2020.10.23		
UNIT:mm	SCALE 1:1	CHECK DATE	DRAWING NO (图号)	REV. AO
A4	SHEET: 1 of 1	APPRO. DATE	压接端子 ϕ 3.61母端	
		AS-TFZ102-286XXB-02091134		
		AS-TFZ102-286-001		