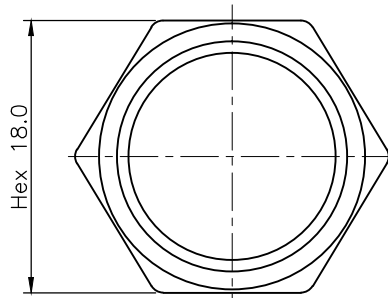
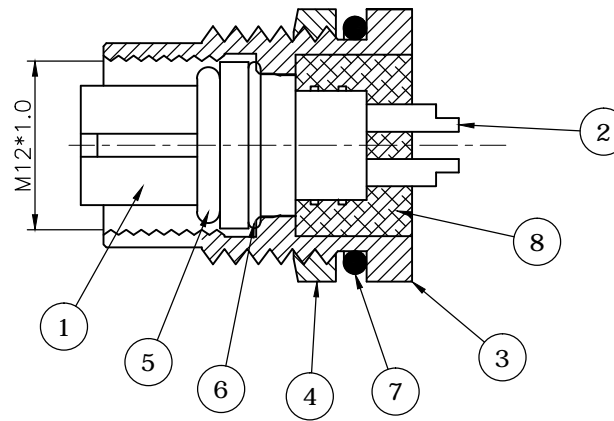
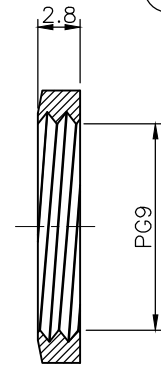


CUT OUT



NUT



REV.	DESCRIPTION	DRAWN	DATE
1	INITIAL RELEASE	TIM	2020/05/08
2	ECR220421001	TIM	2022/04/21

SPECIFICATION:

1. Current Rating: 4A
2. Voltage Rating: 250V
3. Waterproof: IPX7
4. Operating temperature range: -40°C~+85°C

8	EPOXY	EF400A & EF400B, Black
7	O-RING	EPDM
6	O-RING	EPDM
5	O-RING	EPDM
4	NUT	Brass, Nickel plating
3	SHELL	Brass, Nickel plating
2	CONTACT	Brass, 10u" Gold plating over Nickel
1	HOUSING	PBT, UL94V-0, Black

NO.		PART NAME		DESCRIPTION	
UNLESS OTHERWISE SPECIFIED TOLERANCE					
UNIT:	DECIMAL	LINEAR	ANGLES		
	X.	±0.50	±5°		
	X.X	±0.25	±3°		
	X.XX	±0.12	±1°		
DRAWN	Fros	2020/05/08	DRAWN NAME:		
CHECKED	Tim	2020/05/08	M12 A- Code Receptacle, 3Pin Female Straight Solder Type Front Fastened, PG9		
APPROVED	Ken	2020/05/08	PRODUCT NO.	216A-03FAF	
SCALE	SHEET	SIZE	FILE NAME		
			2/1	1/1	A4



WWW.ATTEND.COM.TW