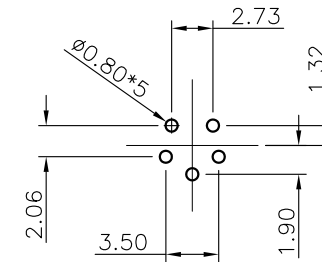
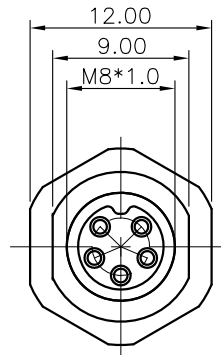
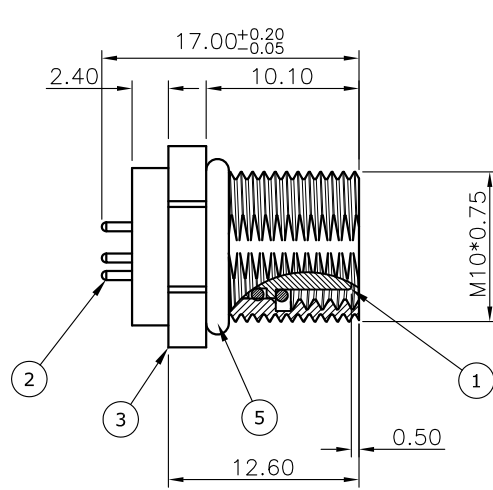


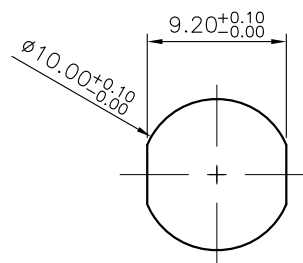
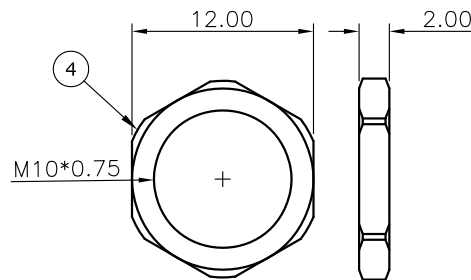
REV.	DESCRIPTION	DRAWN	DATE
1	INITIAL RELEASE	Fros	2019/12/27

SPECIFICATION:

1. ELECTRICAL
 - 1.1 Current Rating: 1.5A
 - 1.2 Voltage Rating: 30V
 - 1.3 Water Proof: IP67
 - 1.4 Operating Temperature: -40°C~+105°C



RECOMMEND LAYOUT



RECOMMEND PANEL CUT OUT

6	EPOXY BASE	
5	O-RING	EPDM, black
4	NUT	Brass, nickel plating
3	SHELL	Brass, nickel plating
2	CONTACT	Brass, gold flash plating under nickel
1	HOUSING	PA66, black

NO.	PART NAME	DESCRIPTION	
UNLESS OTHERWISE SPECIFIED TOLERANCE			
UNIT:	DECIMAL	LINEAR	ANGLES
mm	X.	±0.50	±5°
	X.X	±0.25	±3°
	X.XX	±0.12	±1°
WWW.ATTEND.COM.TW			
DRAWN	Fros	2019/12/27	DRAWN NAME:
CHECKED	Tim	2019/12/27	M8 A-Code Receptacle, 5Pin Female Straight PCB Type Front Fastened
APPROVED	Ken	2019/12/27	PRODUCT NO. 219A-05FSF
SCALE	SHEET	SIZE	FILE NAME
2/1	1/1	A4	219A-05FSF_B_1

