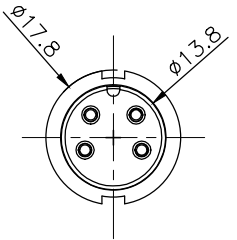
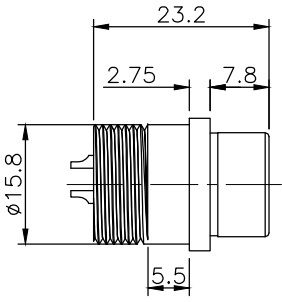
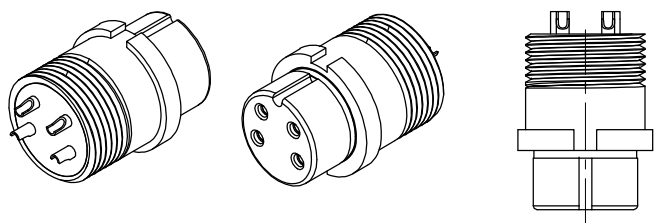


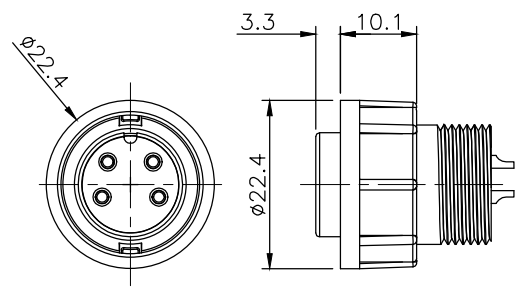
REV.	DESCRIPTION	DRAWN	DATE
1	INITIAL RELEASE	FROS	2020/06/10

SPECIFICATION:

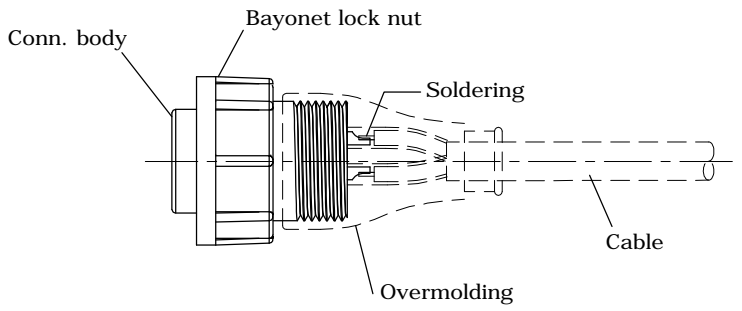
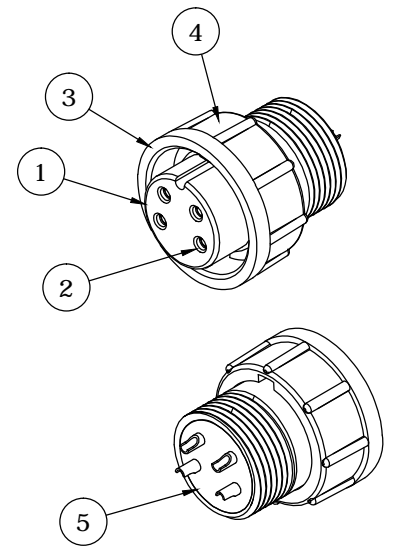
1. Current Rating: 2A/ 5A/ 10A/ 20A per pin (see P2. table)
2. Contact Resistance: 10mΩ
3. Insulation Resistance: 100MΩ
4. Dielectric Withstanding Voltage: 500VAC
5. Durability: 1000 Cycle
6. Operating temperature range: -40°C~+85°C
7. Storage temperature range: -40°C~+85°C
8. Water Proof: IP67



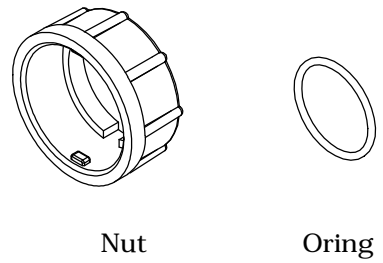
Body



Assembly View



Cable overmolding, bayonet lock, female gender female pin, solder bucket



Accessories

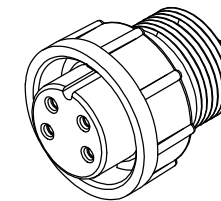
5	GLUE	EPOXY		
4	ORING	Silicone, Gray		
3	HEX NUT	PA66, UL94V-0, Black		
2	CONTACT	Brass, 1u' Min. Gold Plating over Nickel		
1	HOUSING	PA66, UL94V-0, Black		
NO.	PART NAME	DESCRIPTION		
UNLESS OTHERWISE SPECIFIED TOLERANCE				
UNIT:	DECIMAL	LINEAR	ANGLES	
	X.	±0.50	±5°	
	X.X	±0.25	±3°	
mm	X.XX	±0.12	±1°	
www.attend.com.tw				
DRAWN	Fros	2020/06/10	DRAWN NAME: C Size Connector, Overmolding Cable Lock Bayonet, F Skt F Solder Pin	
CHECKED	Tim	2020/06/10		
APPROVED	Ken	2020/06/10		
SCALE	SHEET	SIZE	PRODUCT NO.	see page 2 table
1/1	1/2	A4	FILE NAME	227C-MFF0_B_1




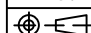
REV.	DESCRIPTION	DRAWN	DATE
	SEE SHEET ONE		

TABLE: Pin Count/ Pin Assignment/ Current Rating/ Part Number

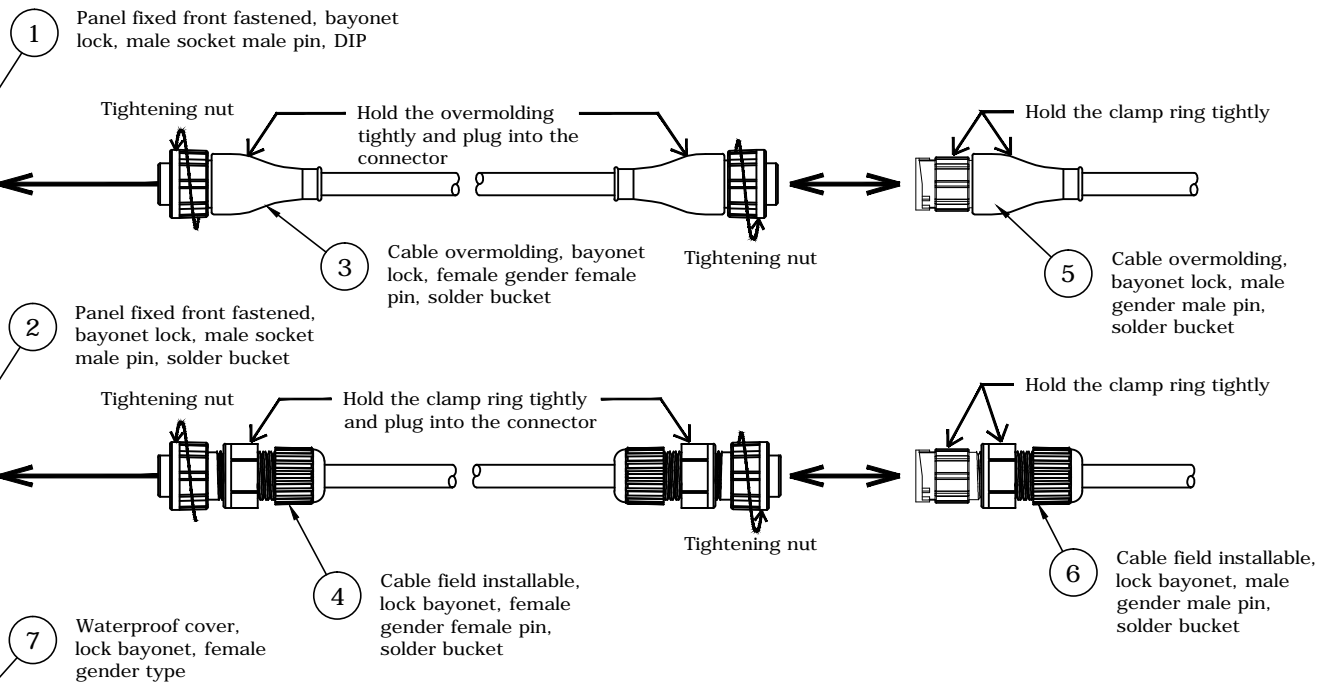
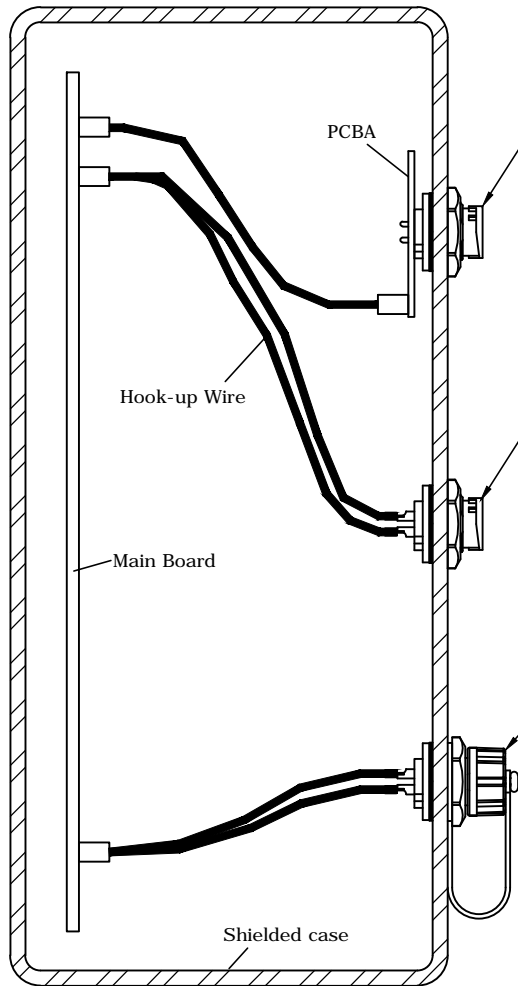
Part Number	227C-03F05	227C-04F02	227C-05F02	227C-10F01	227C-14F02	227C-18F02	227C-20F02
Pin Assignment							
Pin Count	3Pin	4Pin	5Pin	10Pin	14Pin	18Pin	20Pin
Current Rating	20A	10A	10A	2A	5A	2A	2A



Drawing Number: 227C-MFF0
Description: C size connector, overmolding cable lock bayonet, female socket female pin, solder bucket


UNLESS OTHERWISE SPECIFIED TOLERANCE				 ATTEND www.attend.com.tw			
UNIT:	DECIMAL	LINEAR	ANGLES				
mm	X.	±0.50	±5°				
	X.X	±0.25	±3°				
	X.XX	±0.12	±1°				
DRAWN	Fros	2020/06/10	DRAWN NAME: C Size Connector, Overmolding Cable Lock Bayonet, F Skt F Solder Pin				
CHECKED	Tim	2020/06/10	PRODUCT NO. see table				
APPROVED	Ken	2020/06/10	SCALE	SHEET	SIZE	FILE NAME	
		1/1	2/2	A4	227C-MFF0_B_1		

REV.	DESCRIPTION	DRAWN	DATE
1	INITIAL RELEASE	TIM	2020/06/10



Application	Ball no.	Drawing Number	Gender		Matchable drawing numbers			
			Conn. type	Pin type	1	2	3	4
Panel Fixed	①	227C-DMMO	Male	Male	227C-MFFO ③	227C-AFFO ④	227C-0001 ⑦	
	②	227C-SMMO	Female	Female	227C-DMMO ①	227C-SMMO ②	227C-MMMO ⑤	227C-AMMO ⑥
Cable	③	227C-MFFO	Male	Male	227C-MFFO ③	227C-AFFO ④	227C-0001 ⑦	
	④	227C-AFFO	Female	Female	227C-DMMO ①	227C-SMMO ②	227C-MMMO ⑤	227C-AMMO ⑥
	⑤	227C-MMMO	Male	Male	227C-MFFO ③	227C-AFFO ④	227C-0001 ⑦	
Accessories	⑦	227C-0001	Female		227C-MFFO ③	227C-AFFO ④	227C-0001 ⑦	227C-AMMO ⑥

UNLESS OTHERWISE SPECIFIED TOLERANCE			
UNIT:	DECIMAL	LINEAR	ANGLES
mm	X.	±0.50	±5°
	X.X	±0.25	±3°
	X.XX	±0.12	±1°
DRAWN	Tim	2020/06/10	
CHECKED	Fros	2020/06/10	
APPROVED	Ken	2020/06/10	
SCALE	1/2	SHEET	1/1
		SIZE	A4


ATTEND
www.attend.com.tw

DRAWN NAME: C Size Water Proof Connector Application Drawing
 PRODUCT NO.:
 FILE NAME: 227C-Series_B_1