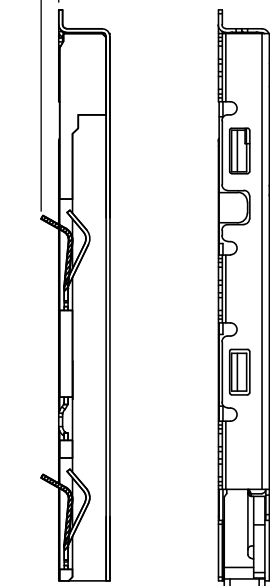
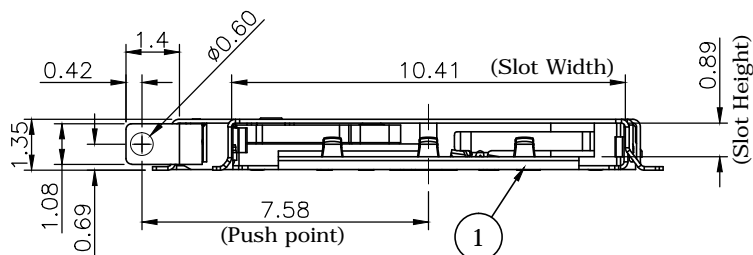
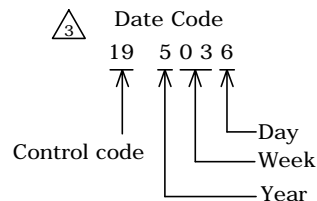
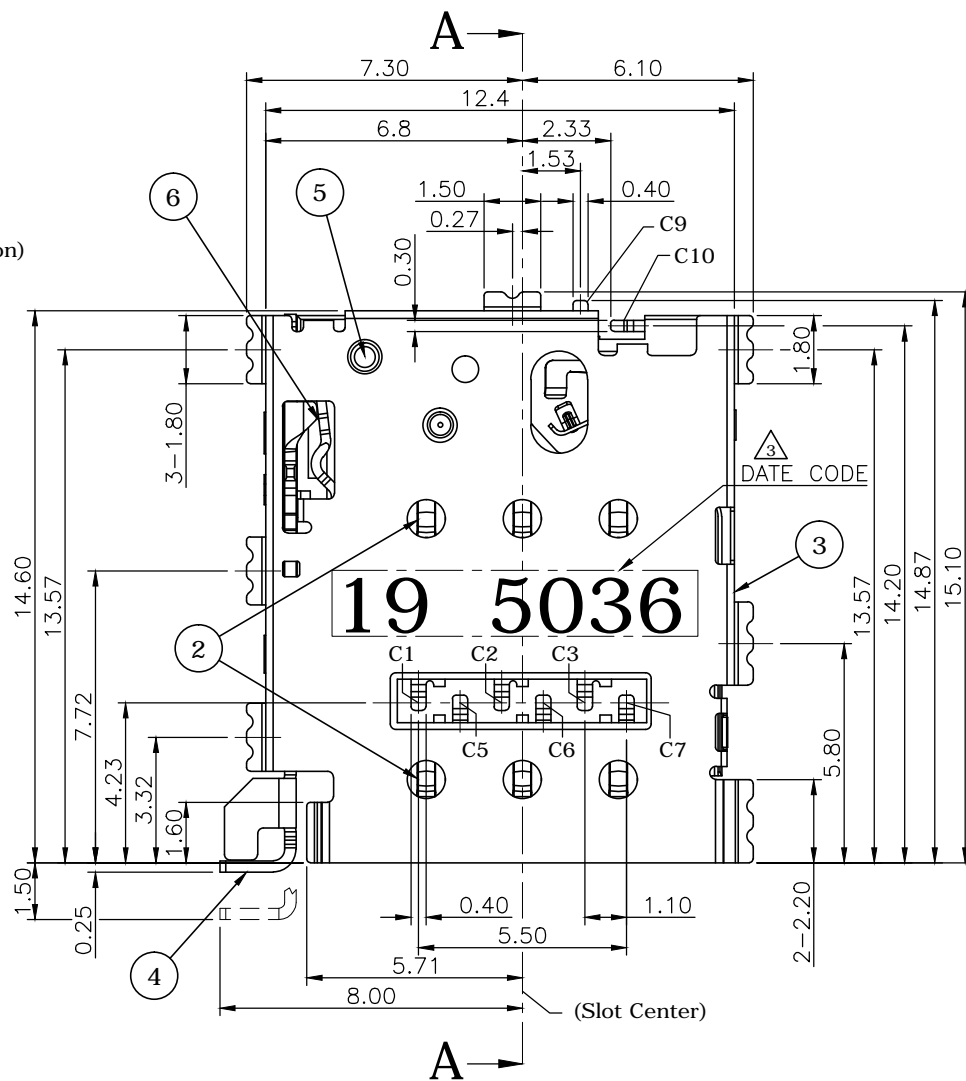


This part is a connector only, it should be used together with Nano SIM Tray

0.51 Max
(Terminal Working Position)



Section A-A



REV.	DESCRIPTION	DRAWN	DATE
3	Revised date code spec.	FROS	2016/11/07
4	Add metal tray layout	FROS	2018/11/14
5	ECR2200009	TIM	2022/11/30

SPECIFICATION:

1. ELECTRICAL

- 1.1 Current Rating: 0.2A max.
- 1.2 Voltage Rating: 10VAC/DC
- 1.3 Contact Resistance: 50mΩ
- 1.4 Insulation Resistance: 1000MΩ
- 1.5 Dielectric Withstanding Voltage: 500VAC

2. MECHANICAL

- 2.1 Durability: 2,000 Cycles
- 2.2 Tray Insertion Force: 20N max.
- 2.3 Tray Extraction Force: 3N min.
- 2.4 Contact Normal Force: 40gf min. per pin

3. ENVIRONMENTAL

- 3.1 Operating temperature range: -30°C~+85°C
- 3.2 Storage temperature range: -40°C~+85°C

4. SOLDER ABILITY

- 4.1 Recommended IR Reflow(Wave Soldering) Temperature: 260°C

6	Latch	SUS301-H, 0.25T
5	Cam	SUS301-1/2H, 0.5T
4	Lever	SUS301-H, 0.3T
3	Shell	SUS301-H, 0.1T, Tail area: 0.8u" Au min. Under-plated: 50u" Ni min.
2	Contact	MKT322-ESH, 0.1T, Contact area: 8u" Au Min. Tail area: 0.8u" Au min., Under-plated: 40u" Ni min.
1	Insulator	LCP S475+30%GF, UL94V-0, Black
NO.	PART NAME	DESCRIPTION

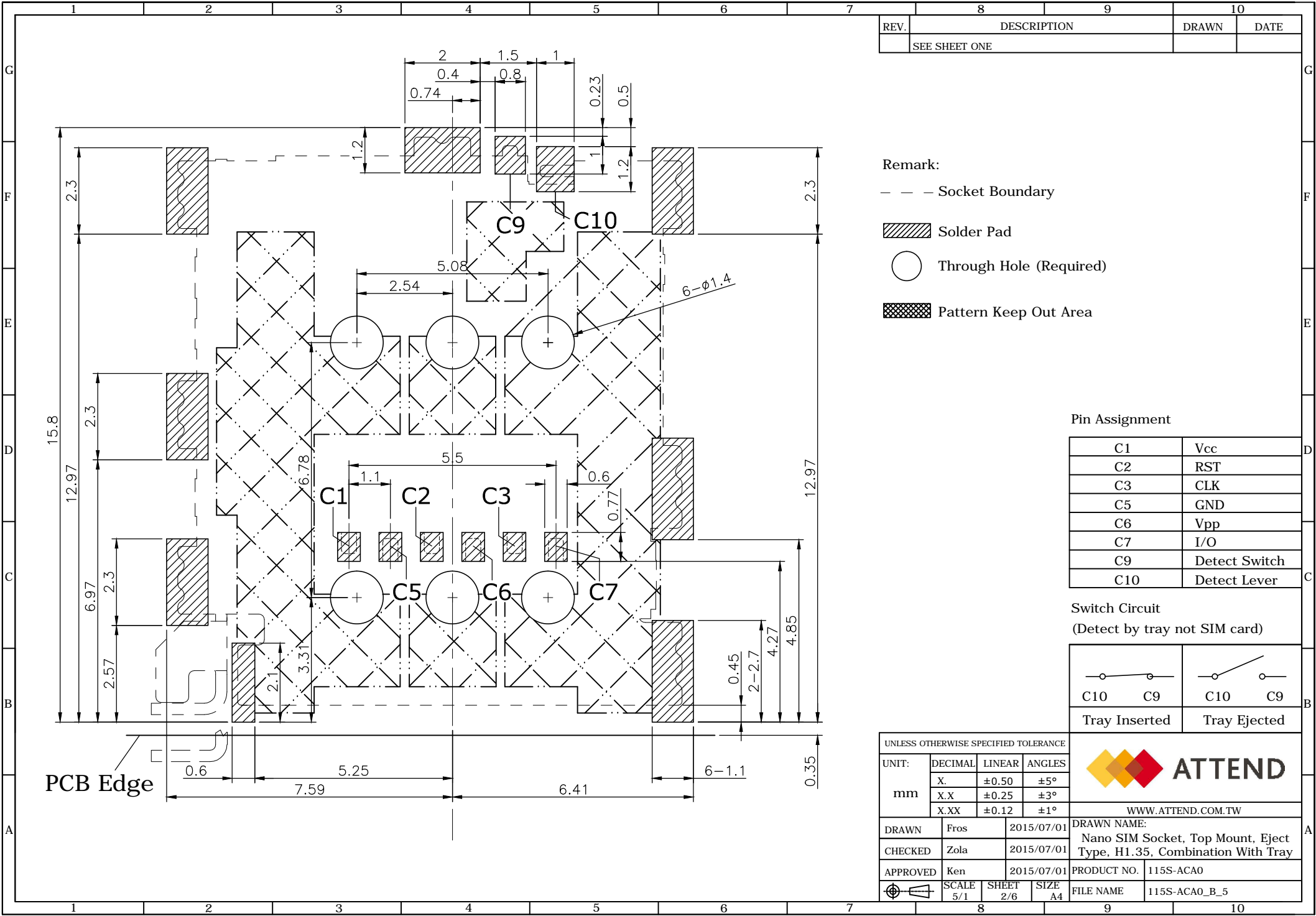
UNLESS OTHERWISE SPECIFIED TOLERANCE

UNIT:	DECIMAL	LINEAR	ANGLES
mm	X.	±0.50	±5°
	X.X	±0.25	±3°
	X.XX	±0.12	±1°






WWW.ATTEND.COM.TW

DRAWN	Fros	2015/07/01	DRAWN NAME:	Nano SIM Socket, Top Mount, Eject Type, H1.35, Combination With Tray	
CHECKED	Zola	2015/07/01	PRODUCT NO.	115S-ACA0	
APPROVED	Ken	2015/07/01	FILE NAME	115S-ACA0_B_5	
SCALE	5/1	SHEET	1/6	SIZE	A4



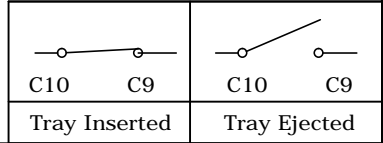
REV.	DESCRIPTION	DRAWN	DATE
	SEE SHEET ONE		

- Remark:
- - - Socket Boundary
 -  Solder Pad
 -  Through Hole (Required)
 -  Pattern Keep Out Area

Pin Assignment

C1	Vcc
C2	RST
C3	CLK
C5	GND
C6	Vpp
C7	I/O
C9	Detect Switch
C10	Detect Lever

Switch Circuit
(Detect by tray not SIM card)

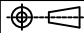


UNLESS OTHERWISE SPECIFIED TOLERANCE

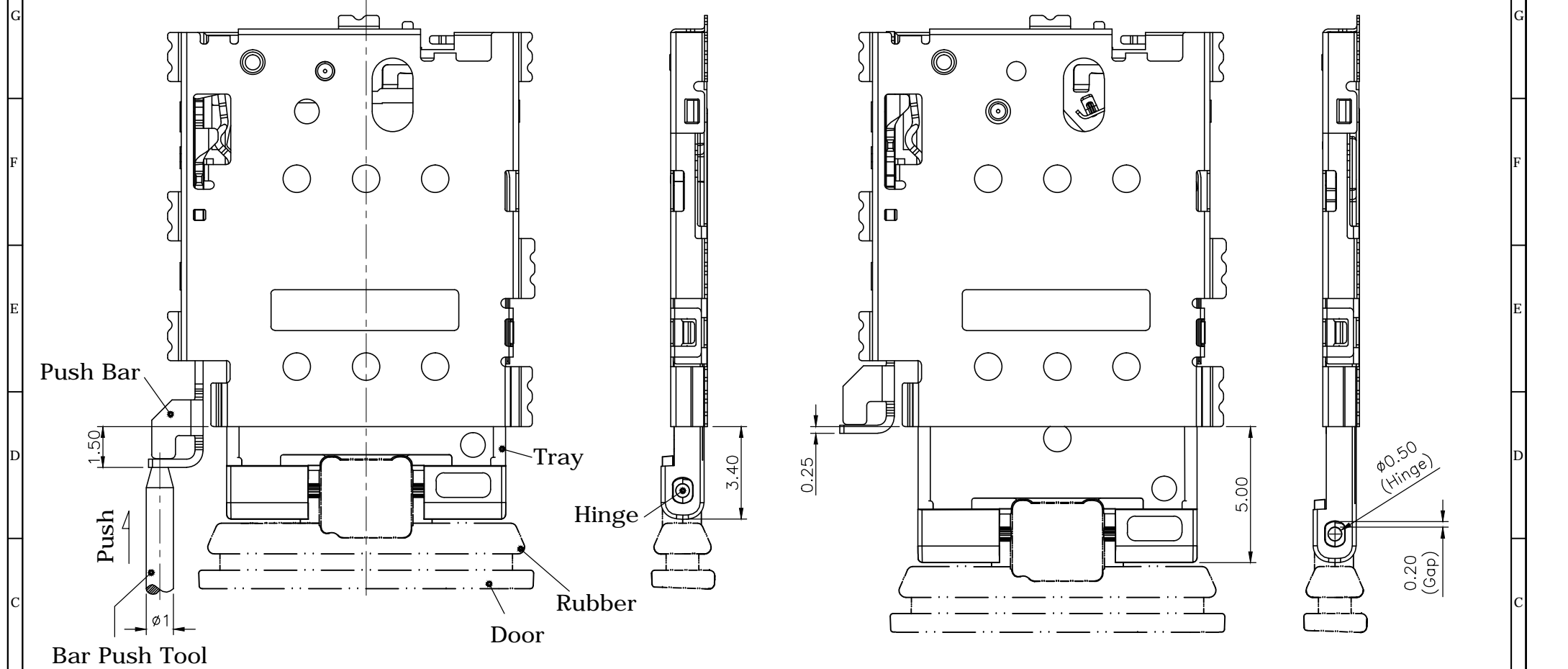
UNIT:	DECIMAL	LINEAR	ANGLES
mm	X.	±0.50	±5°
	X.X	±0.25	±3°
	X.XX	±0.12	±1°



WWW.ATTEND.COM.TW

DRAWN	Fros	2015/07/01	DRAWN NAME:	Nano SIM Socket, Top Mount, Eject Type, H1.35, Combination With Tray
CHECKED	Zola	2015/07/01	PRODUCT NO.	115S-ACAO
APPROVED	Ken	2015/07/01	FILE NAME	115S-ACAO_B_5
	SCALE	SHEET	SIZE	
	5/1	2/6	A4	

REV.	DESCRIPTION	DRAWN	DATE
	SEE SHEET ONE		




**115S-ACA0 with 115S-ACA1
Tray insertion dimension drawing**

**115S-ACA0 with 115S-ACA1
Tray ejection dimension drawing**

Part description
Hinge, rubber and door are made and assembled by the client

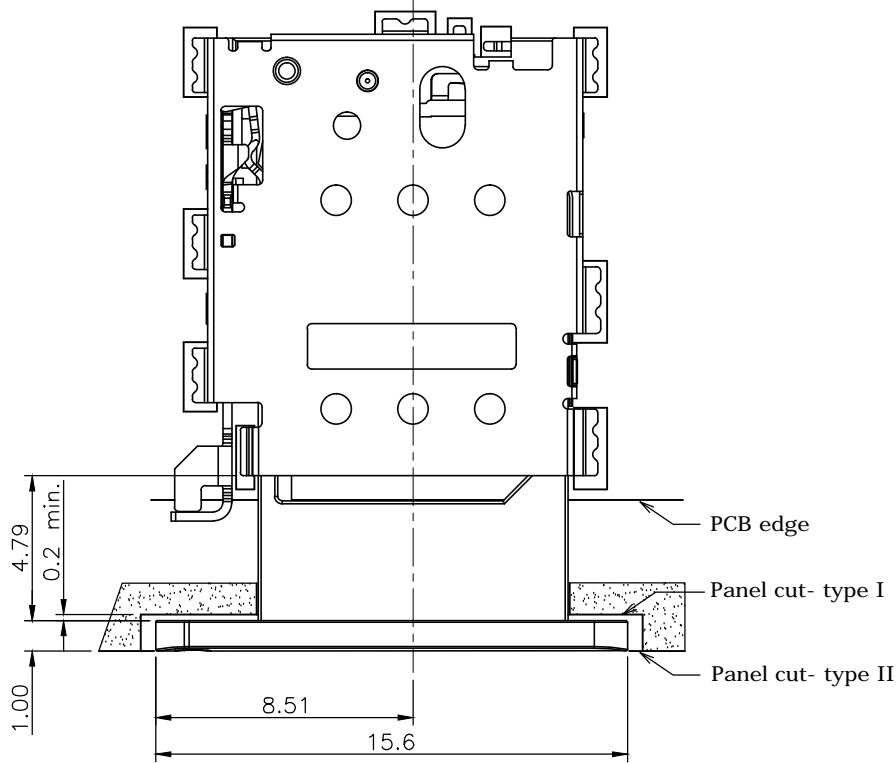
Hinge: The connection between tray and door (P/N: 115-00001)
Rubber: Waterproof function
Door: Design by the client
Bar Push Tool: Design by the client or (P/N: 115-00002)

Tray ejecting types notes:
1. Pull out the door/ tray directly
2. Push the BAR PUSH linkage mechanism

UNLESS OTHERWISE SPECIFIED TOLERANCE				 WWW.ATTEND.COM.TW
UNIT:	DECIMAL	LINEAR	ANGLES	
mm	X.	±0.50	±5°	
	X.X	±0.25	±3°	
	X.XX	±0.12	±1°	
DRAWN	Fros	2015/07/01	DRAWN NAME:	
CHECKED	Zola	2015/07/01	Nano SIM Socket, Top Mount, Eject Type, H1.35, Combination With Tray	
APPROVED	Ken	2015/07/01	PRODUCT NO. 115S-ACA0	
SCALE	5/1	SHEET 3/6	SIZE A4	FILE NAME 115S-ACA0_B_5

Recommendation:

Suggested panel cut (Type I/II) can lead the push bar to touch and press precisely lever. If the design does not follow this instruction, a track for the push bar should be considered for the designer to prevent the deviation of the entry of the push bar.

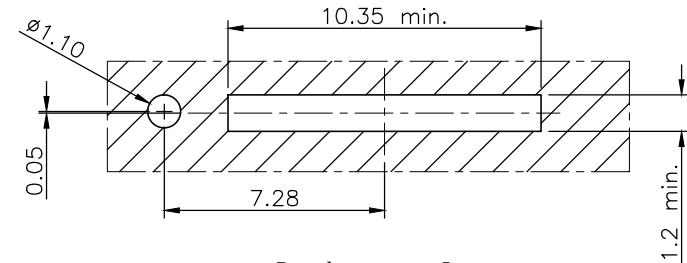


115S-ACA0 with 115S-ACA2

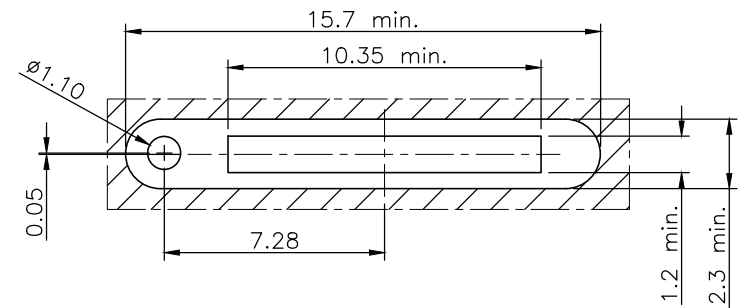
REV.	DESCRIPTION	DRAWN	DATE
	SEE SHEET ONE		

Tray ejecting types notes:

1. Pull out the door/ tray directly
2. Push the BAR PUSH linkage mechanism



Panel cut- type I



Panel cut- type II

UNLESS OTHERWISE SPECIFIED TOLERANCE

UNIT:	DECIMAL	LINEAR	ANGLES
mm	X.	±0.50	±5°
	X.X	±0.25	±3°
	X.XX	±0.12	±1°

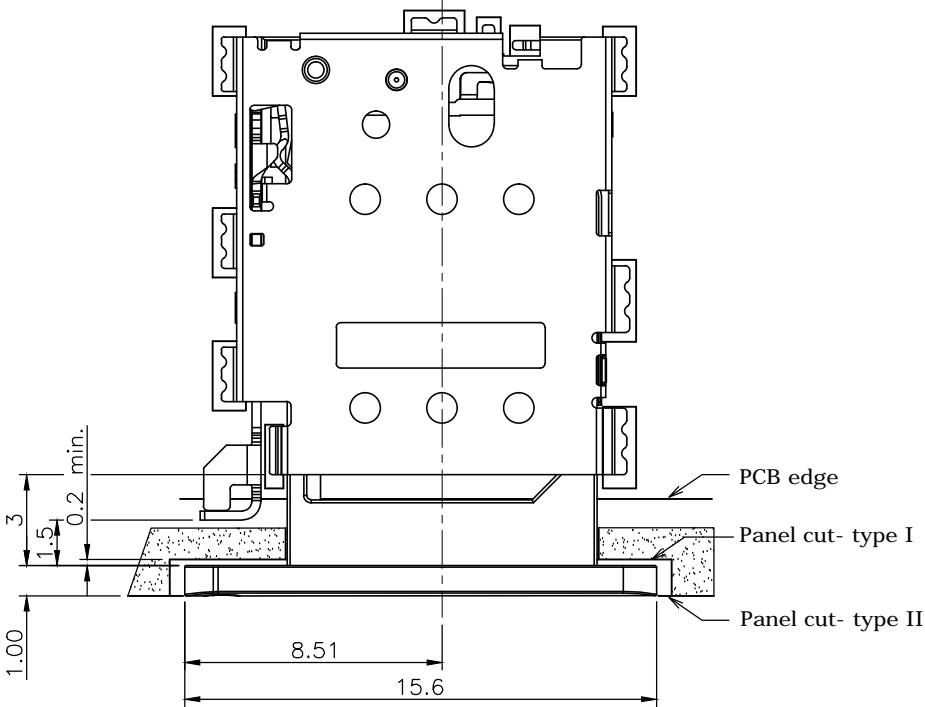


WWW.ATTEND.COM.TW

DRAWN	Fros	2015/07/01	DRAWN NAME:
CHECKED	Zola	2015/07/01	Nano SIM Socket, Top Mount, Eject Type, H1.35, Combination With Tray
APPROVED	Ken	2015/07/01	PRODUCT NO. 115S-ACA0
SCALE	4/1	SHEET 4/6	SIZE A4
			FILE NAME 115S-ACA0_B_5

Recommendation:

Suggested panel cut (Type I/II) can lead the push bar to touch and press precisely lever. If the design does not follow this instruction, a track for the push bar should be considered for the designer to prevent the deviation of the entry of the push bar.

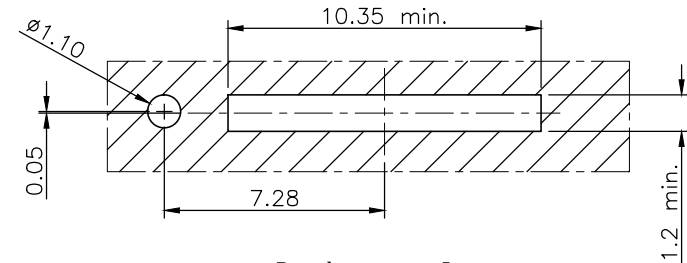


115S-ACA0 with 115S-ACA3

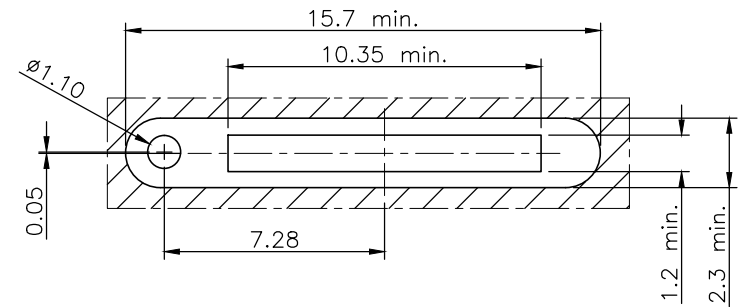
REV.	DESCRIPTION	DRAWN	DATE
	SEE SHEET ONE		

Tray ejecting types notes:

1. Pull out the door/ tray directly
2. Push the BAR PUSH linkage mechanism



Panel cut- type I



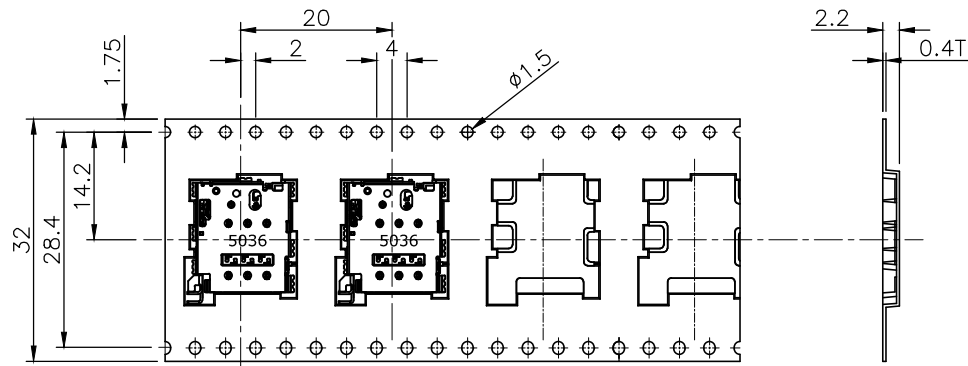
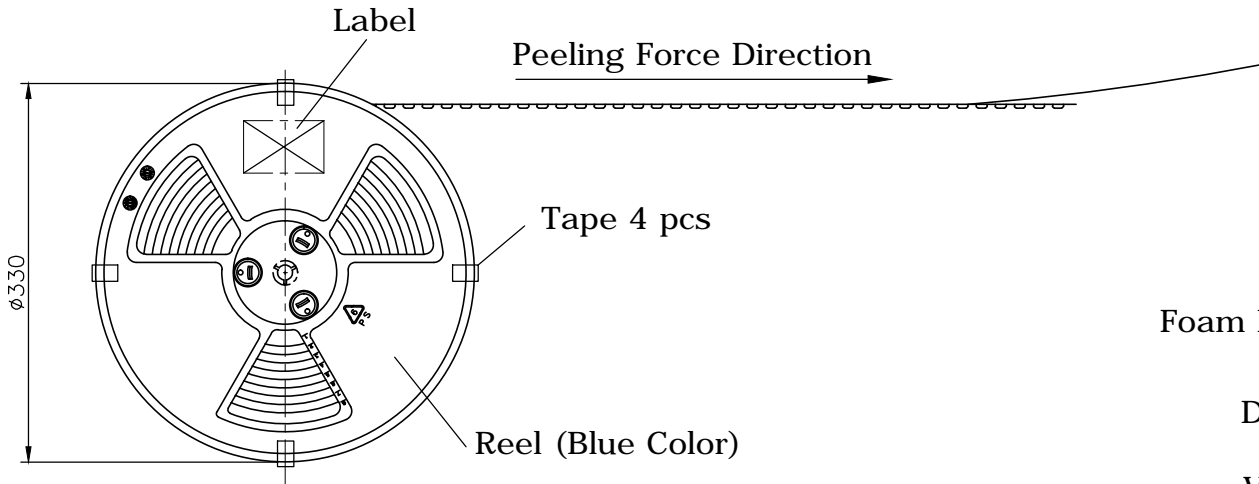
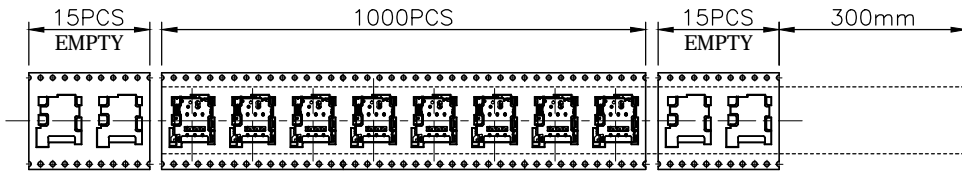
Panel cut- type II

UNLESS OTHERWISE SPECIFIED TOLERANCE			
UNIT:	DECIMAL	LINEAR	ANGLES
mm	X.	±0.50	±5°
	X.X	±0.25	±3°
	X.XX	±0.12	±1°
DRAWN	Fros	2015/07/01	DRAWN NAME: Nano SIM Socket, Top Mount, Eject Type, H1.35, Combination With Tray
CHECKED	Zola	2015/07/01	
APPROVED	Ken	2015/07/01	
SCALE	4/1	SHEET 5/6	
FILE NAME		115S-ACA0_B_5	



WWW.ATTEND.COM.TW

REV.	DESCRIPTION	DRAWN	DATE
	SEE SHEET ONE		



CARRIER TAPE

PACKAGING SPECIFICATION:

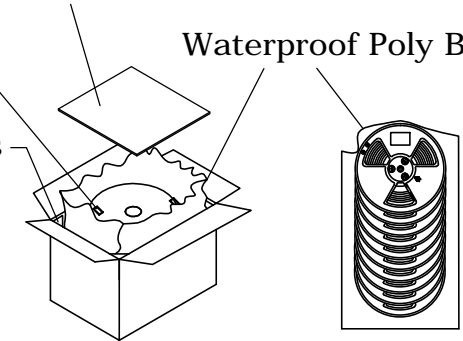
1. MATERIAL
 - 1.1 Embossed Carrier Tape: PS Black
 - 1.2 Top Cover Tape: PET
20-130g(Peel Speed 300mm/Minute)
Peeling angle: 165° to 180°
 - 1.3 Taping Reel: Plastic
2. PACKING
 - 2.1 Quantity:
1,000Piece/ Reel
9 Reel (9,000Piece)/ Carton

Foam Rubber Cushion 2pcs

Desiccant 2pcs

Vold Filler 4pcs

Waterproof Poly Bag



Cartion: 340*W340*H355

Total 9 Reels

UNLESS OTHERWISE SPECIFIED TOLERANCE			
UNIT:	DECIMAL	LINEAR	ANGLES
mm	X.	±0.50	±5°
	X.X	±0.25	±3°
	X.XX	±0.12	±1°



WWW.ATTEND.COM.TW

DRAWN	Fros	2015/07/01	DRAWN NAME:	
CHECKED	Zola	2015/07/01		Nano SIM Socket, Top Mount, Eject Type, H1.35, Combination With Tray
APPROVED	Ken	2015/07/01	PRODUCT NO.	115S-ACAO
	SCALE N/A	SHEET 6/6	SIZE A4	FILE NAME 115S-ACAO_B_5