



Nano SIM Socket New Product Launch

Date: 2020/07/30

CONTENTS

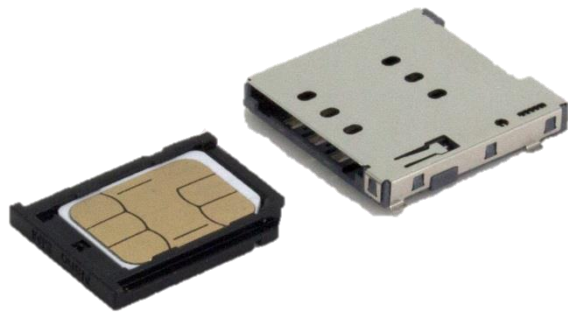


1. Design highlights
2. Dimension and drawing
3. More features
4. Benchmark
5. Applications
6. Complete solution of Nano SIM

Design highlights

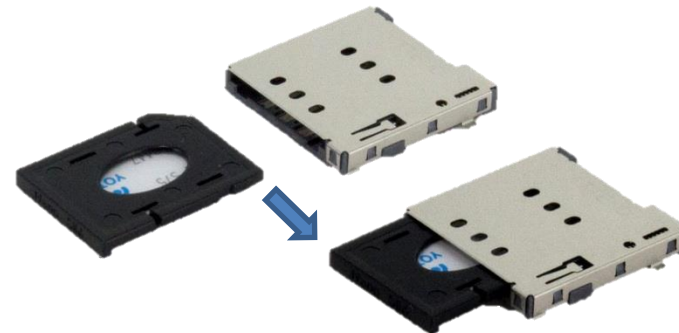
Unique tray push-push design

Allow user easily insert and withdraw the card by pushing the tray



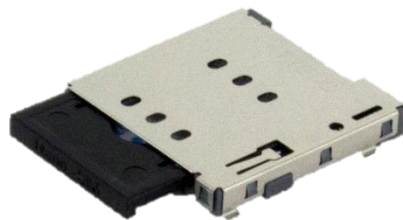
Press SIM card into tray

1



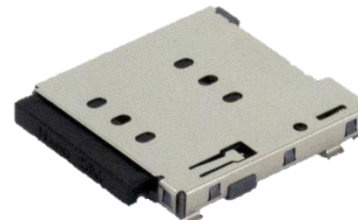
Flip the tray over.
Slide the tray into socket

2



Push tray to eject

4



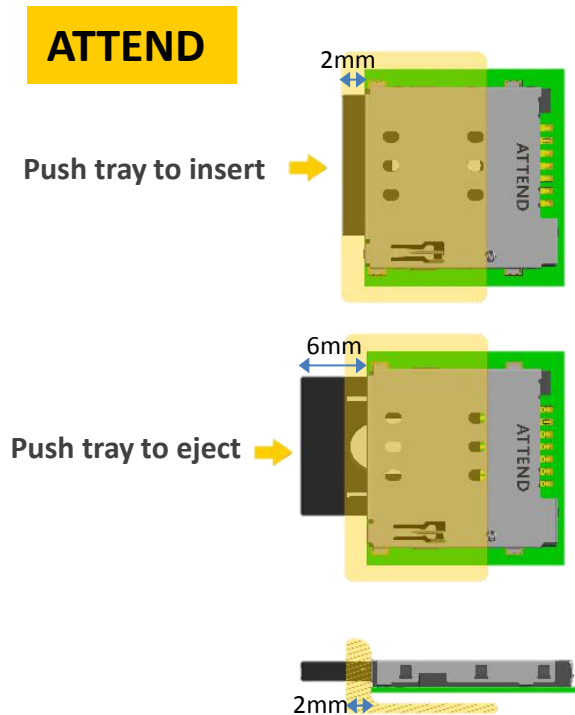
Push tray to insert

3

Design highlights

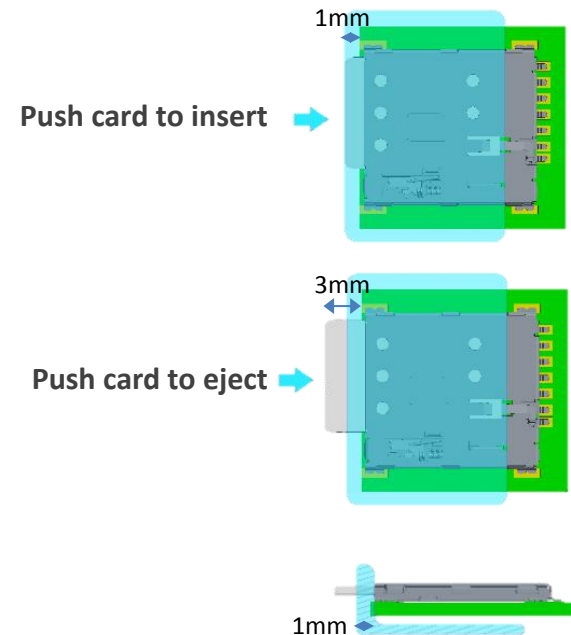
Unique tray push-push design

- Enlarge the ejected length, user can extract SIM card easily and reduces card lost risk.
- Increase the workspace between PC board and casing and provide more flexibility for hardware design.



Maximum 2mm space for panel or casing design

Other brand

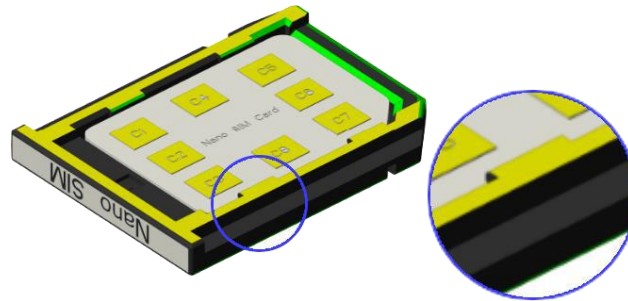


Maximum only 1mm or less space for panel or casing design

Design highlights

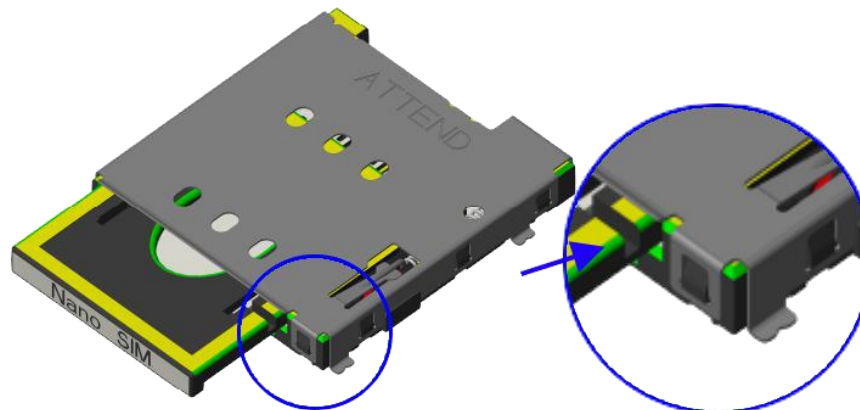
Card locking feature

By gentle press to ensure the SIM card stay and fasten inside the tray



Inner rail design

Provide smooth gliding action during SIM card insertion.



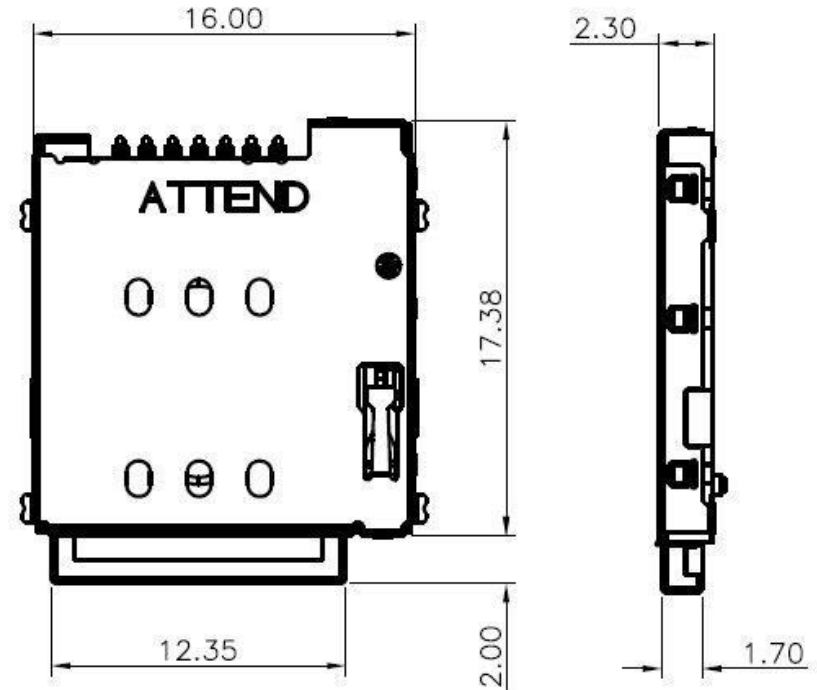
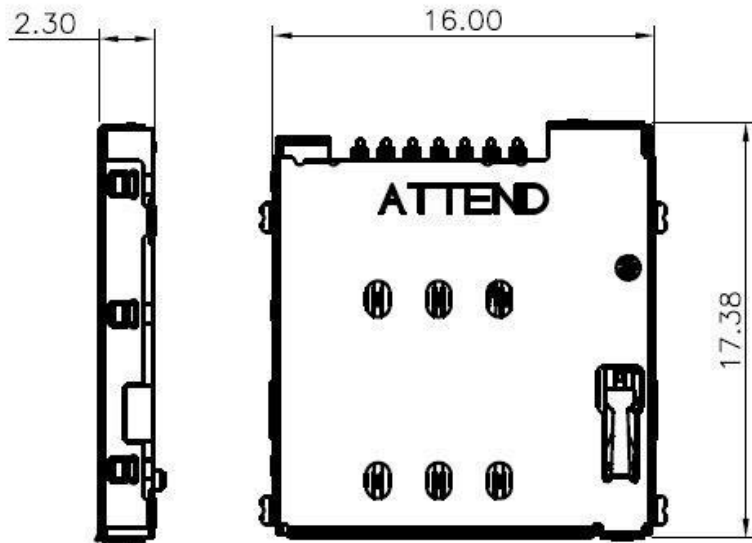
Mechanical dimension



ATTEND
Connect to Your Success

Before tray is inserted

After inserting the tray



Detail drawing :

Adobe Acrobat
文件






More features



- Equipped with card detection switch
- Great operability with enlarged card eject length
- Achieve higher shock and vibration endurance level
- Anti-lifting contact prevents the contact damage when card is inserted and extracted.
- Tray lock feature ensures secure locking of tray when inserted
- Fit for both above and below PC board design.
- Incorrect card insertion prevention
- Card tray design prevents dust get into device

Benchmark

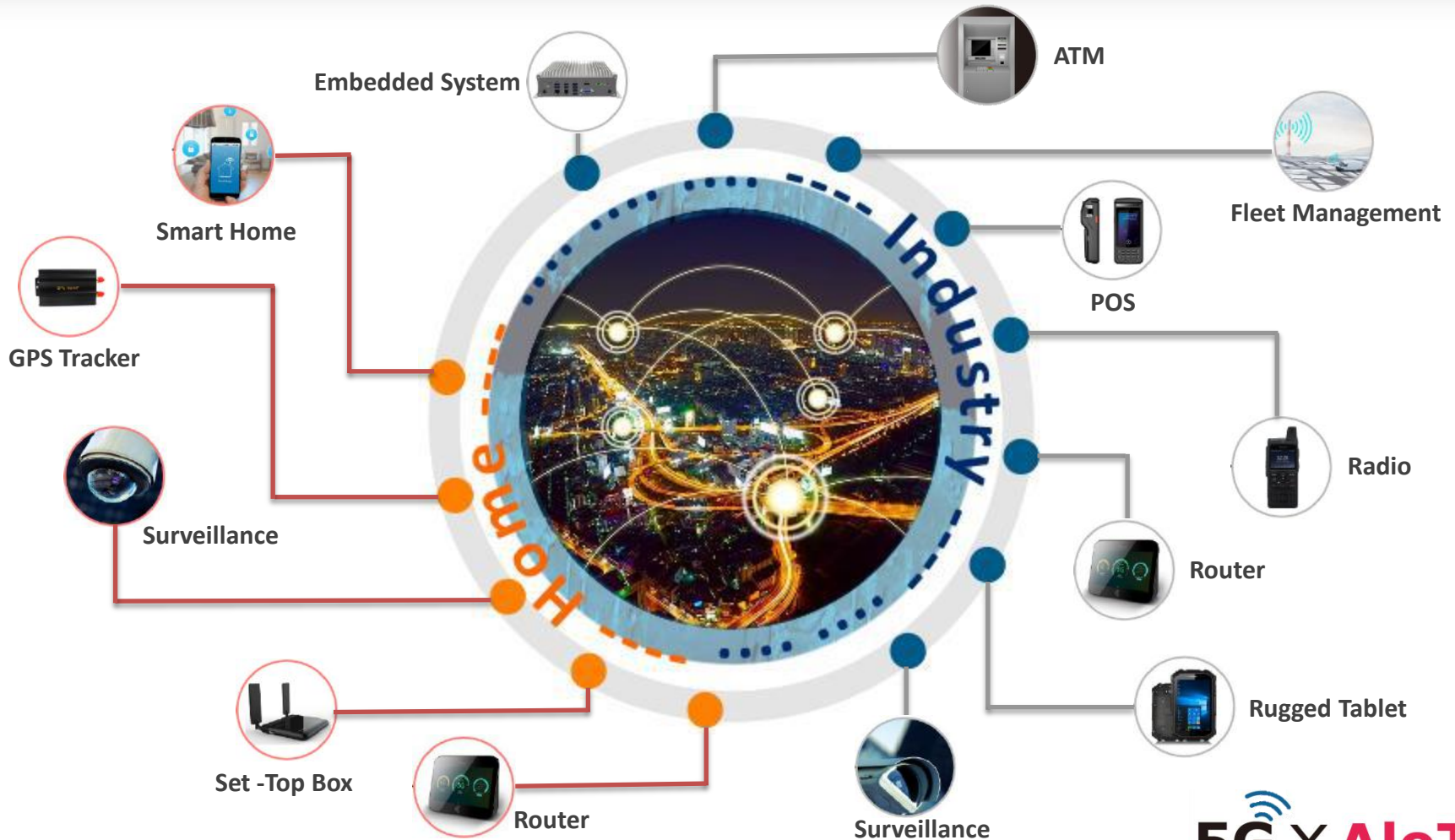


| No. | Item | Attend | Other (J,H,T) |
|-----|-----------------------|--|--|
| 1 | Dimension | L17*W17*H2.3 | L14.35*W11.2*H1.25 ~ L14.5*W13.09*H1.37 |
| 2 | Operation mode | Tray Push | Card Push |
| 3 | Ejected length | 4mm  | 2.7mm ~ 3.1mm |
| 4 | Layout space | 1.3mm  | 0mm ~ 0.65mm |
| 5 | Panel Cut Out | Closed (by tray)  | Open |
| 6 | Anti-Drop Card | Yes  | No |
| 7 | Tray Lock Features | Yes  | No |
| 8 | Card detection switch | normal open (C5) | normal open (SW), normal close (Shell) |

Applications



ATTEND
Connect to Your Success



5G X AIoT

Complete Solution of Nano SIM



ATTEND
Connect to Your Success

Push-Pull



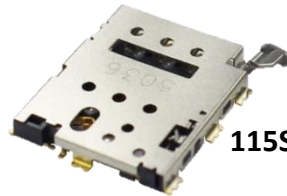
115U-A000

Hinge



115V-AD00

Eject Type



115S-AC00

Accessory

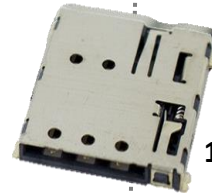


115S-AC01

115S-AC02

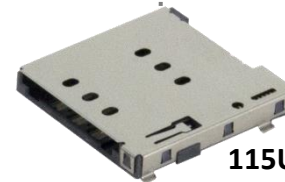
115S-AC03

Push Push



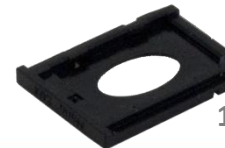
115U-A100

Tray Push



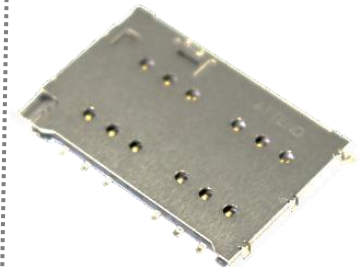
115U-A101

Accessory



115U-T001

Dual-Port Eject Type



115S-BS00

Accessory



115S-BT00



- THANK YOU -