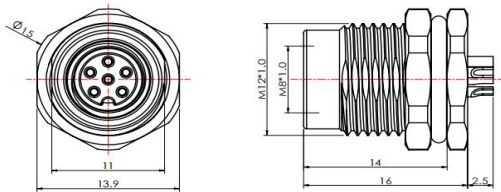


Accessories for actuator/sensor receptacles – female flange with solder contacts, rear-mounted



Typecode M08A06FBRB2SC011

ID 1009010000005

Technical Data*

Connector A	
Connector	M8, Female, A-Coding
Number of Pins	6-Pin
Contacts	Brass, Gold-plated
Flange housing	Brass, Nickel-plated
Mounting type	Rear-mounted
Contact Carriers	PA
Seal	FKM
Protection Class	IP67, Only in screwed condition
Mechanical lifespan	≥ 100 Mating cycles
Pollution degree	III
Screw-in thread	M12 x 1.0
Locking mode	Screw
Connection mode	Solder contact
Wiring specification	26 AWG
Standard	IEC 61076-2-104

Electrical properties at +20 °C	
Rated Voltage	30 V AC/30 V DC
Rated current	1.5 A
Rated impulse voltage	0.8 kV
Contact resistance	≤ 5 mΩ
Insulation resistance	≥ 100 MΩ

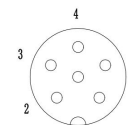
Mechanical and chemical properties	
Ambient temperature range (stationary)	-40 °C ... 120 °C

Commercial data	
Country of origin	CN
Packaging unit	1 pc

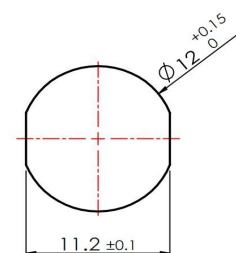
Features

- M8, Female, 6-Pin
- Rear-mounted
- Protection Class: IP67
- RoHS-compliant
- Metal housing
- Solder contact

Contact assignment



Through bore



* Please note that the data specified here were design data, and the parameters of product are subject to changes without prior notice. Matters not mentioned herein. Please contact customer service. Please also note that the user is responsible for validating functionality, conformity with applicable laws and directives, as well as for the electrical safety in the particular application.