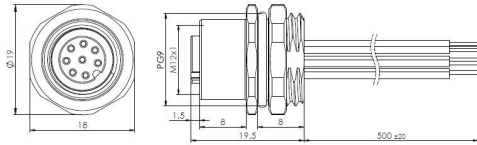


## Accessories for actuator/sensor receptacles – female flange with wires, front-mounted



**Typcode** M12A08FBRF6WV005011  
**ID** 1006020000271

### Technical Data\*

Connector A	
Connector	M12, A-coding
Number of Pins	8-Pin
Contacts	Brass, Gold-plated
Flange housing	Brass, Nickel-plated
Mounting type	Front-mounted
Contact Carriers	PA
Seal	FKM
Screw-in thread	M16 × 1.5
Connection mode	Crimp connection
Mechanical lifespan	≥ 100 Mating cycles
Pollution degree	3
Protection Class	IP67, (screwed together)
Cable length	0.5 m
Core insulation	PVC
Core cross-section	8 × 0.25 mm <sup>2</sup>
Core colors	1-BN, 2-WH, 3-BU, 4-BK, 5-GY, 6-PK, 7-VT, 8-OG
Locking mode	Screw M12 x 1
Standard	IEC 61076-2

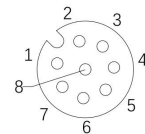
Electrical properties at +20 °C	
Rated Voltage	30 V
Rated current	2 A
Insulation resistance	≥ 100 MΩ

Mechanical and chemical properties	
Ambient temperature range (stationary)	-40 °C ... 85 °C

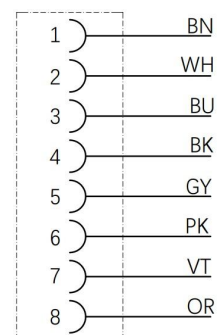
### Features

- M12, Female, 8Pin
- Resistant to salt spray
- Protection Class: IP67
- RoHS-compliant
- Approval: cULus, CE

### Contact assignment

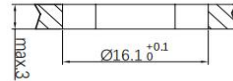
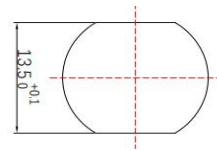


### Connection diagram



**Technical Data\*****Commercial data**

Weight	32 g
Country of origin	CN
Packaging unit	1 pc

**Through bore**

\* Please note that the data specified here were design data, and the parameters of product are subject to changes without prior notice. Matters not mentioned herein. Please contact customer service. Please also note that the user is responsible for validating functionality, conformity with applicable laws and directives, as well as for the electrical safety in the particular application.