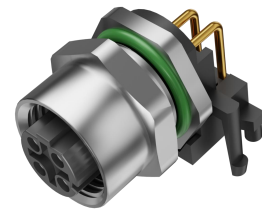
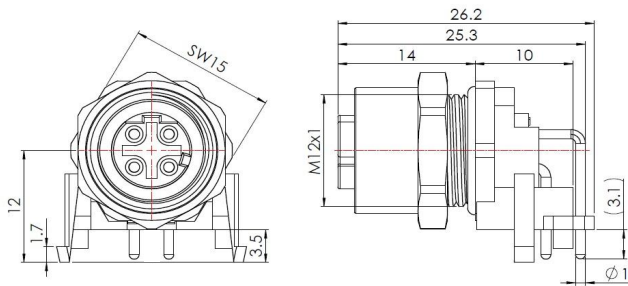


Accessories for actuator/sensor receptacle – female with PCB 90°, rear-mounted



Typcode M12D04FBRB2P9000
ID

Technical Data*

Connector A

| | |
|---------------------|---------------------------------|
| Connector | M12, Female, D-Coding |
| Number of Pins | 4-Pin |
| Contacts | Brass, Gold-plated |
| Flange housing | Brass, Nickel-plated |
| Contact Carriers | PA |
| Seal | NBR |
| Protection Class | IP67, Only in screwed condition |
| Mechanical lifespan | ≥ 100 Mating cycles |
| Pollution degree | III |
| Locking mode | M12 x 1 |
| Connection mode | PCB 90° |
| Screw-in thread | M12 x 1 |
| Standard | RoHS |

Electrical properties at +20 °C

| | |
|-----------------------|----------|
| Rated Voltage | 250 V |
| Rated current | 4 A |
| Rated impulse voltage | 1500 V |
| Contact resistance | ≤ 3 mΩ |
| Insulation resistance | ≥ 100 MΩ |

Mechanical and chemical properties

Ambient temperature range (stationary) -40 °C ... 85 °C

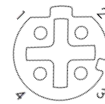
Commercial data

| | |
|-------------------|------|
| Weight | g |
| Country of origin | CN |
| Packaging unit | 1 pc |

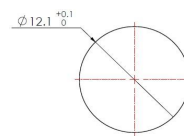
Features

- M12, Female, 4-Pin
- Protection Class: IP67
- PCB solder contact
- RoHS-compliant

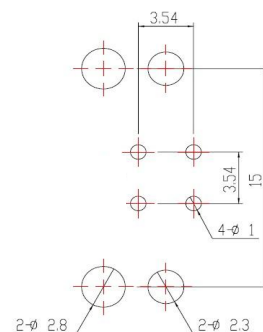
Contact assignment



Through bore



PCB Layout



* Please note that the data specified here were design data, and the parameters of product are subject to changes without prior notice. Matters not mentioned herein. Please contact customer service. Please also note that the user is responsible for validating functionality, conformity with applicable laws and directives, as well as for the electrical safety in the particular application.