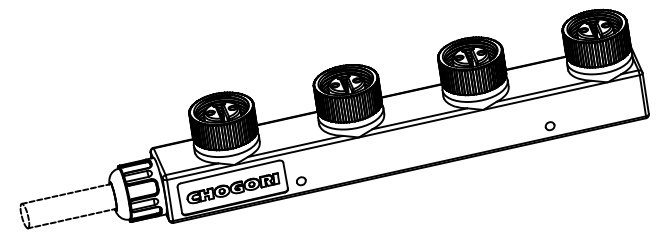
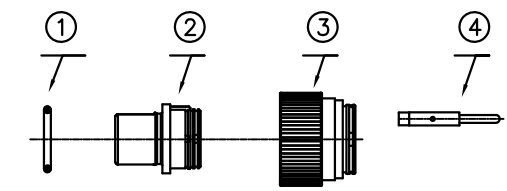
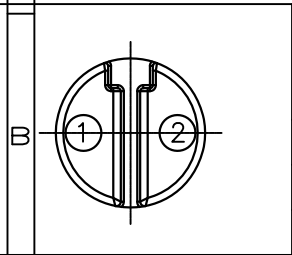


5	6	7	8
REV.	ECN NO.	DESCRIPTION	SIGN



- NOTE:
1. Connector: Nylon
 - 2.Pin: Brass 4u" Gold Plated
 - 3.Temperature Rating:-40°C ~ +80°C.
 - 4.Current Rating:10A
 - 5.Breakdown Voltage:2KV/1Minute Moist
 - 6.Insulation Resistance:10MΩ,500VDC
 - 7.Contact Resistance:10mΩ
 - 8.Waterproof:IP68



2	Blue
1	Brown
Conn.	Wire Color

Pin Assignments
Front View 前视图

Pin Out

UNIT:mm	
TOLERANCE	
.X	±0.25
.XX	±0.15
.XXX	±0.05
ANGLES	±1°

Description		M15 Distributor 1*4 In Parallel	
SCALE: N/A	SHEET	1 OF 1	
REV. D1	SIZE A4	* :Inspection Item	



PART NO	48002010-13	DRAWN BY	XuXianMing	DATE	20140514
DWG NO		CHECKED BY		DATE	
CUSTOMER		APPROVED BY		DATE	

Material List			
No.	Material No.	Q'ty	Material Description
1	501-00062-00	4	O-Ring Ø13*Ø9.0*Ø2.0 Silicon Gel
2	104-00145-00	4	Connector 2Pin, Nylon+GF
3	107-00036-00	4	Nut-02 (blue)
4	801-00044-02	8	ZH1.5 Brass 4u" Gold Plated
5	903-00084-00	1	PCB 1#4, parallel FR-4, 94-V0
6	601-00040-00		Molding, Nylon (black) CHOGORI
7	502-00010-00	1	Gasket
8	109-00004-00	1	103 Seals Nut

THIS INFORMATION IS CONFIDENTIAL AND IS DISCLOSED TO YOU ON CONDITION THAT NO FURTHER DISCLOSURE IS MADE BY YOU TO OTHER THAN CHOGORI PERSONNEL WITHOUT AUTHORIZATION FROM CHOGORI CORP.