

Memory card connector

MICRO SD Connector Series

L-KLS1-SD110-R SD CARD 5IN1 TYPE CONN/SD /MMC/RSMMMC/MMC4.0

NOTES:

1.MATERIAL:

INSULATOR:HIGH TEMPERATURE THERMOPLASTIC
FLAMMABILITY RATING:UL94V-0 COLOR:BLACK
CONTACT:COPPER ALLOY
COVER:COPPER ALLOY

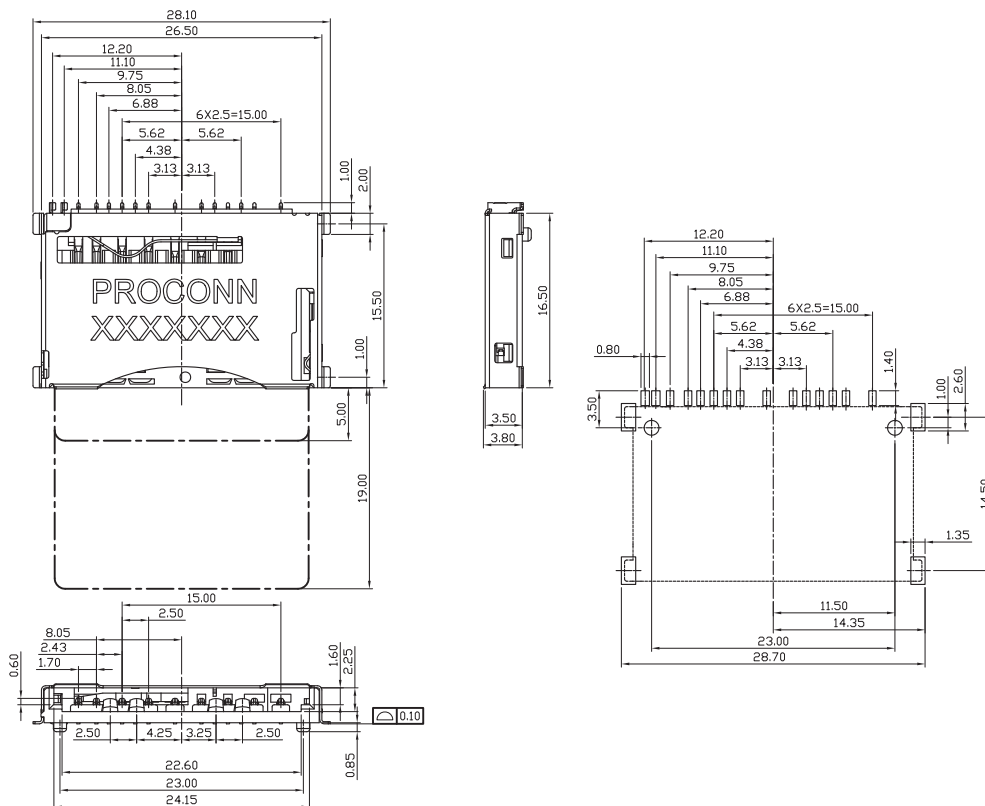
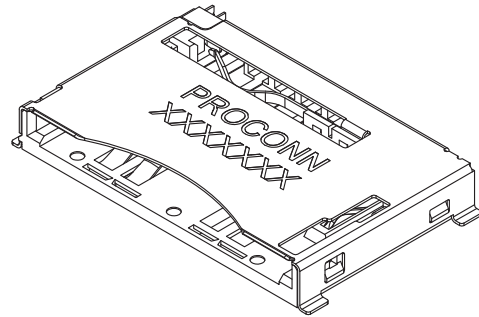
2.CONTACT AREA PLATING:GOLD OVER NI

3.COPLANARITY:0.10mmMAX.

4.WP:WRITE PROTECT

CD:CARD DETECT INDICATION

5.P/N:



ORDER INFORMATION

Product NO.: L-KLS1-SD110-R

Pos. NO. _____ SD Card Connector Type