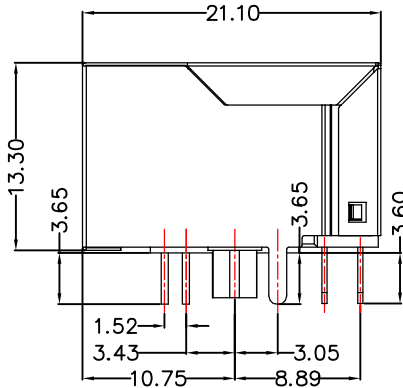
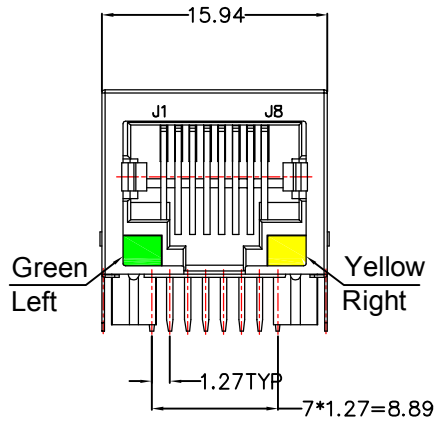


由 Autodesk 教育版产品制作

RoHS CONFORM

REV.	ECN / DESCRIPTION	BY	DATE



Material:

Housing :PBT+30%GF,UL94V-0,Black.

Plastic bracket :PBT+30%GF,UL94V-0,Black.

Shell: C2680R-H,T=0.20mm,Nickel plated on all area.

Contact terminal:Phosphor bronze C5210R-EH,T=0.35mm,  
Gold plated 6u" on mating area.

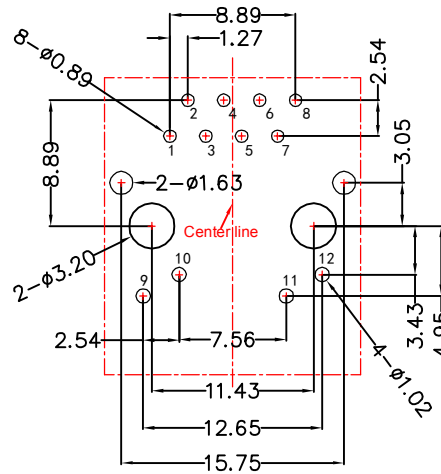
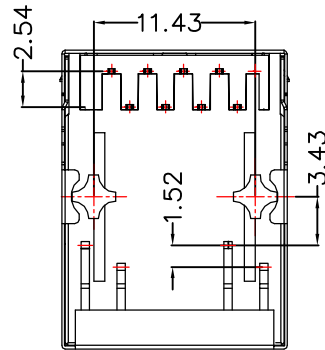
Mechanical:

Durability :750 cycles Min.

Mating force :30N Max.

Operating temperature:-40°C~+85°C.

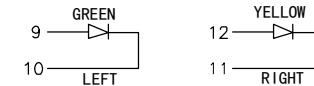
Storage temperature: : -40°C~+85°C.



PCB LAYOUT

SpecificationLED

Standard LED Color	LED Wavelength	Foward(V MAX)	Typical(V TYP)	Luminous Intensity
Green	560-580nm	2.5v	2.1-2.2v	9-25 MCD
Yellow	580-610nm	2.5v	2.1-2.2v	9-30 MCD



KLS ELECTRONIC CO; LTD

TITLE:  
TAB-DOWN 1X1 100BASE

SIZE  
A4  
UNITS  
MM[INCH]

GENERAL TOLERANCES  
UNLESS SPECIFIED

APPROVED BY:  
JP.Gong

PART NO.:  
L-KLS12-TL206-1X1-G/Y-03

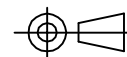
SACLE  
1:1  
REV  
A0

x±0.25  
.x±0.20  
x°±3.0°  
.x°±2.0°

CHECKED BY:  
Xu.TW

DWG NO.:

SHEET  
1/3

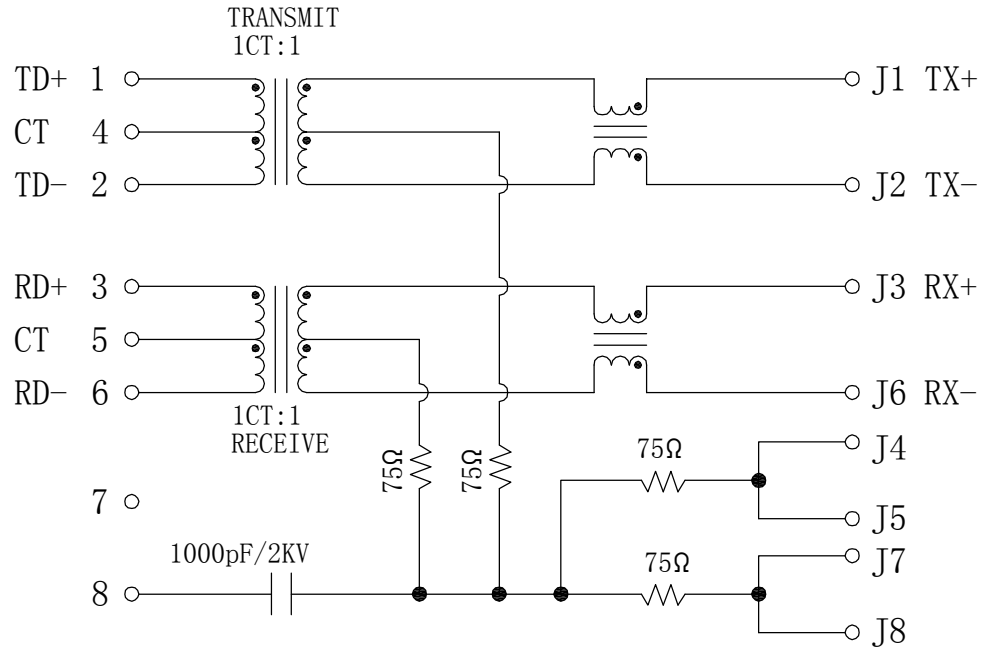


.xx±0.10  
.xxx±0.05  
.xx°±1.5°  
.xxx°±1.0°

DESIGND BY:  
Qu.mq

RoHS CONFORM

REV.	ECN / DESCRIPTION	BY	DATE



Electrical:

1. Insulation resistance: 500 megohms MIN @500VDC.
2. Contact resistance: 20 milliohms Max. initial.  
50 milliohms Max. after durability test.
3. Turn Ratio: 1~2: J1~J2 = 1CT:1CT(±2%).  
3~6: J3~J6 = 1CT:1CT(±2%).
4. OCL: 350uH Min. at 100KHz 100mV 8mA DC.
5. Insertion Loss: -1.0 dB Max 1MHz to 100MHz.
6. Return loss: -16dB Min From 1MHz to 30MHz;  
-14dB Min From 30MHz to 60MHz.  
-10dB Min From 60MHz to 80MHz.
7. Cross talk: -40dB Min From 1MHz-30MHz;  
-35dB Min From 30MHz-60MHz;  
-30dB Min From 60MHz-100MHz;
8. CMR: -35dB Min From 1MHz-100MHz;
9. Hi-Pot: 1500V AC 6S 1mA

KLS ELECTRONIC CO; LTD

TITLE:  
TAB-DOWN 1X1 100BASE

SIZE  
A4  
UNITS  
MM[INCH]

GENERAL TOLERANCES  
UNLESS SPECIFIED

APPROVED BY:  
JP.Gong

PART NO.:  
L-KLS12-TL206-1X1-G/Y-03

SACLE  
1:1

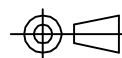
REV  
A0

x±0.25	x°±3.0°
.x±0.20	.x°±2.0°

CHECKED BY:  
Xu.TW

DWG NO.:

SHEET  
2/3



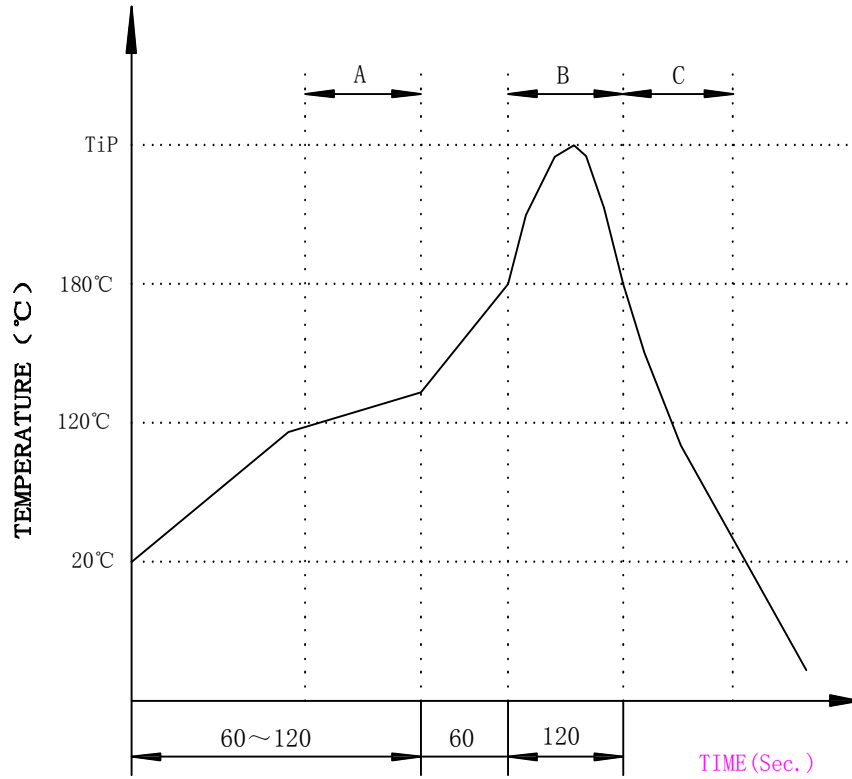
.xx±0.10	.xx°±1.5°
.xxx±0.05	.xxx°±1.0°

DESIGND BY:  
Qu.mq

RoHS CONFORM

# PROFILE OF WAVE SOLDER

REV.	ECN / DESCRIPTION	BY	DATE



A.Preheating B.Soldering C.Gradual Cooling  
 Tip temperature:260±5°C.  
 Tip temperature time:5Sec Max.  
 Tip melting point of Sn96.5/Ag3/Cu0.5:217°C.

After the wave solder, the plastic column of product under the pcb will have a slight plastic melting situation .

KLS ELECTRONIC CO; LTD	TITLE: TAB-DOWN 1X1 100BASE	SIZE A4	UNITS MM[INCH]	GENERAL TOLERANCES UNLESS SPECIFIED		APPROVED BY: JP.Gong
	PART NO.: L-KLS12-TL206-1X1-G/Y-03	SACLE 1:1	REV A0	x±0.25	x°±3.0°	CHECKED BY: Xu.TW
	DWG NO.:	SHEET 3/3		.xx±0.10	.xx°±1.5°	DESIGND BY: Qu.mq
				.xxx±0.05	.xxx°±1.0°	