

**SPECIFICATION**

Current Rate:3 AMP  
 Insulation Resistance:1000M Ω Min.  
 Contact Resistance:20m Ω Max.  
 Dielectric Voltage:1000V AC for one minute  
 Operation Temperature:-40°C to +105°C

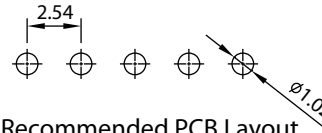
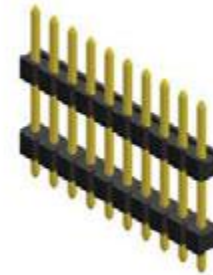
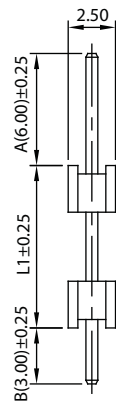
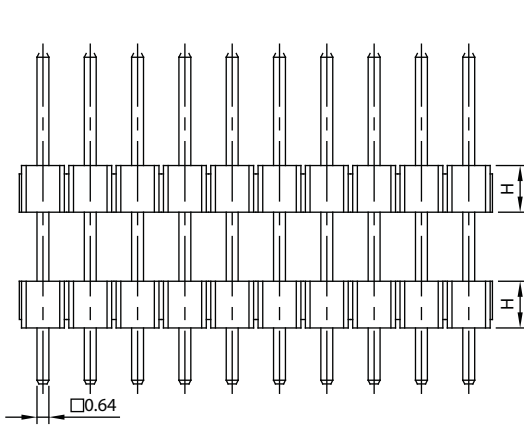
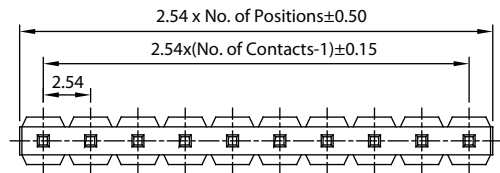
**MATERIAL**

Insulator:Polyester,UL 94V-0  
 Standard:PBT or Nylon 6T  
 Contact Pin:Copper Alloy  
 Contact Plating:Gold Flash all over

Standart height (H) = 2.5

**PLH-xx**

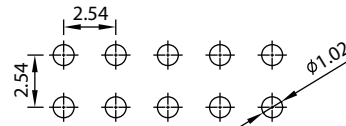
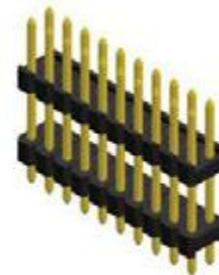
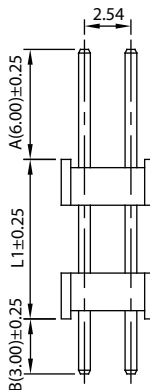
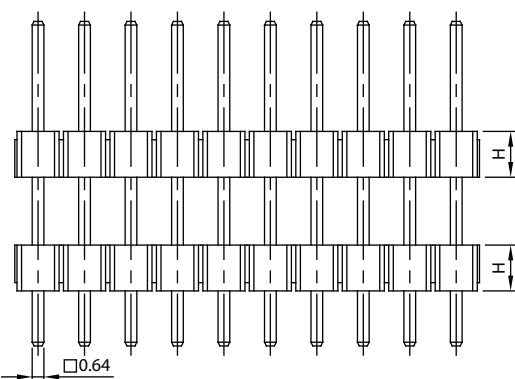
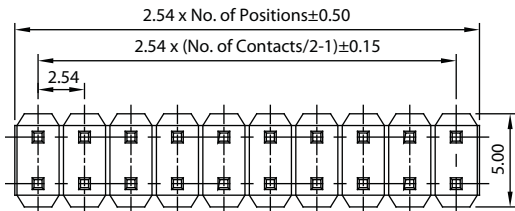
Pin Header 2.54mm 1 Row H=1.5/1.7/2.5mm Stack Straight Type



Recommended PCB Layout  
 (PCB TOLERANCE ±0.05)

**PLHD-xx**

Pin Header 2.54mm 2 Row H=1.5/1.7/2.5mm Stack Straight Type



Recommended PCB Layout  
 (PCB TOLERANCE ±0.05)