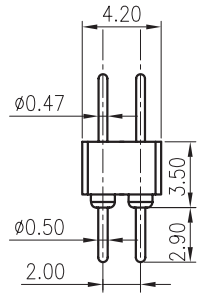
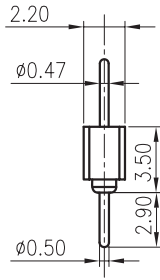


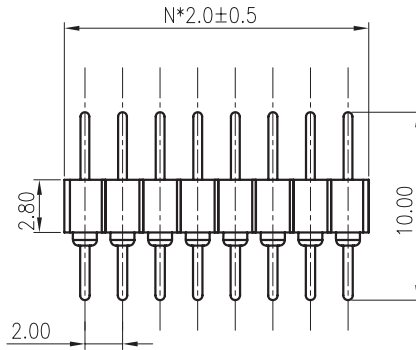
| REV. | DESCRIPTION | DRAWN | CHECKED | APPROVED |
|------|-------------|--------------|---------|----------|
| A | NEW RELEASE | LL 06/30/06' | | |
| | | | | |
| | | | | |
| | | | | |



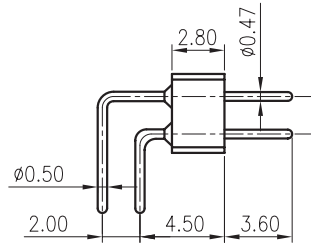
Dual ROWS



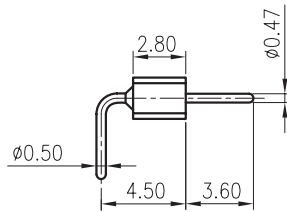
Single ROW



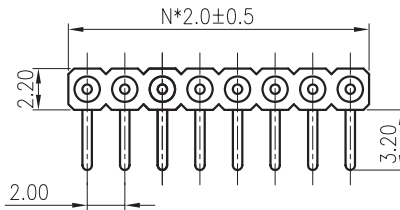
V/T TYPE



Dual ROWS



Single ROW



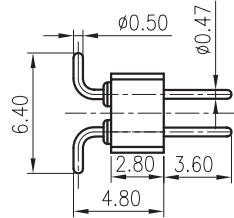
R/A TYPE

NOTES:

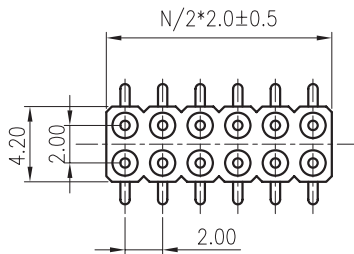
- ELECTRICAL CHARACTERISTICS:
 - CONTACT RESISTANCE: 20mΩ Max.
 - DIELECTRIC WITHSTANDING VOLTAGE: 500V AC(rms) FOR 1 MINUTE.
 - INSULATION RESISTANCE: 1000MΩ Min.
- ENVIRONMENT CHARACTERISTICS:
 - OPERATING TEMPERATURE: 0°C~+85°C.
 - STORAGE TEMPERATURE: -20°C~+70°C.
- PRODUCT NUMBER CODE:

PSLM2 - X X
PDLM2

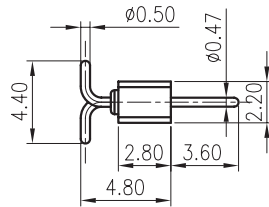
Mounting type
No: DIP
R: Right angle
S: SMT
No. of contacts
40
2x40
Rows
S: Single
D: Dual



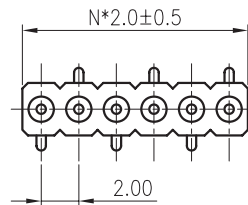
Dual ROWS



SMT TYPE



Single ROW



| GENERAL TOLERANCE | | ANGLE TOLERANCE | |
|-------------------|-------|-----------------|------------|
| X. | ±0.60 | X. | ±5' |
| .X | ±0.38 | .X | ±3' |
| .XX | ±0.25 | .XX | ±2' |
| DRAWING TYPE | | CUSTOMER | |
| SCALE | | 1:1 | SHEET 10F1 |
| DRAWING NO. | | | |

| PROJECTION | TITLE | DIP & SMT STRIPS ADAPTOR PITCH 2.00mm | |
|------------|-------|---------------------------------------|--|
| UNITS | mm | | |
| SHEET SIZE | A4 | SERIES | |