

RB151 THRU RB157

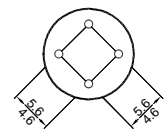
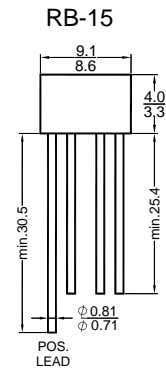
1.5 A SINGLE-PHASE SILICON BRIDGE RECTIFIERS

Reverse Voltage - 50 to 1000 V

Forward Current - 1.5 A

Features

- Surge overload rating - 50 amperes peak
- Ideal for printed circuit boards
- Reliable low cost construction technique results in inexpensive product
- Mounting Position: Any

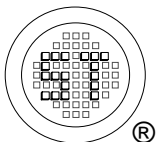


Dimension in mm

Absolute Maximum Ratings and Characteristics

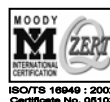
Ratings at 25 °C ambient temperature unless otherwise specified. Single-phase, half wave, 60 Hz, resistive or inductive load. For capacitive load, derate current by 20%.

Parameter	Symbols	RB151	RB152	RB153	RB154	RB155	RB156	RB157	Units
Maximum Recurrent Peak Reverse Voltage	V_{RRM}	50	100	200	400	600	800	1000	V
Maximum RMS Voltage	V_{RMS}	35	70	140	280	420	560	700	V
Maximum DC Blocking Voltage	V_{DC}	50	100	200	400	600	800	1000	V
Maximum Average Forward Rectified Current at $T_A = 50\text{ }^\circ\text{C}$	$I_{F(AV)}$	1.5							A
Peak Forward Surge Current, 8.3 ms Single Half-Sine-wave Superimposed on Rated Load (JEDEC Method)	I_{FSM}	50							A
Maximum Forward Voltage Drop per Element at 1A	V_F	1							V
Maximum Reverse Current at Rated DC Blocking Voltage per Element	I_R	10							μA
		1							mA
Operating Temperature Range	T_j	- 55 to + 150							$^\circ\text{C}$
Storage Temperature Range	T_{stg}	- 55 to + 150							$^\circ\text{C}$



SEMTECH ELECTRONICS LTD.

(Subsidiary of Sino-Tech International Holdings Limited, a company listed on the Hong Kong Stock Exchange, Stock Code: 724)



Dated : 17/08/2009 G

RATING AND CHARACTERISTICS CURVES

FIG. 1-MAXIMUM FORWARD SURGE CURRENT

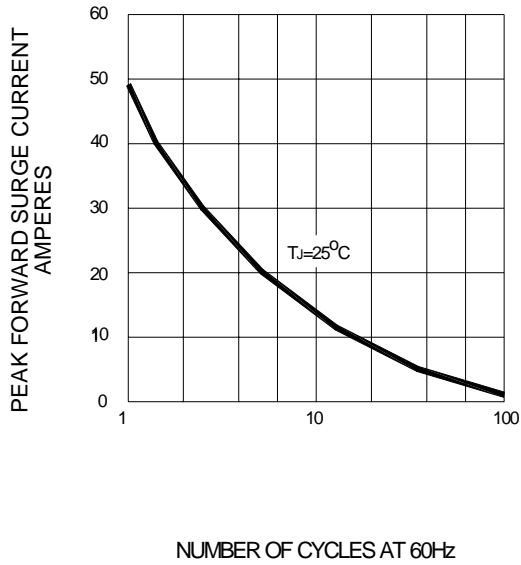


FIG. 2-DERATING CURVE
OUTPUT RECTIFIED CURRENT

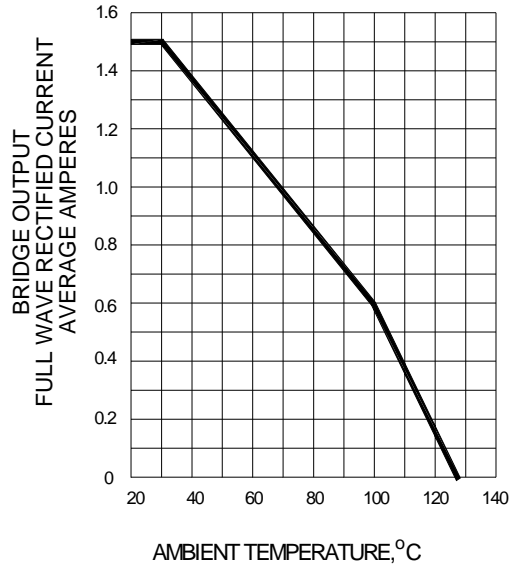


FIG. 3-TYPICAL FORWARD CHARACTERISTICS

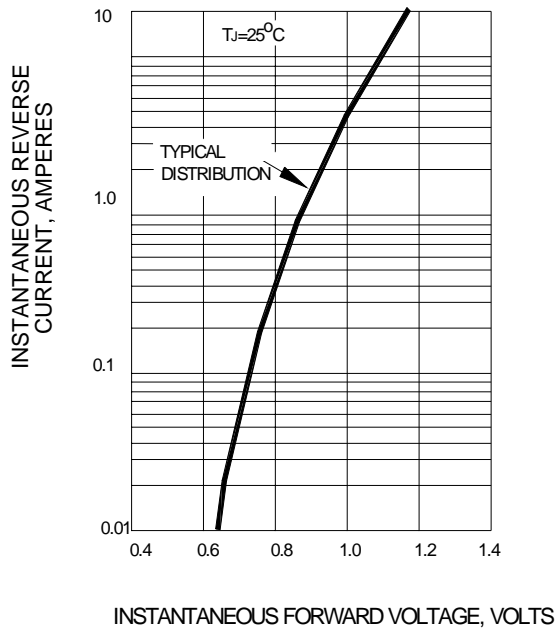
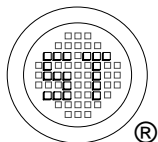
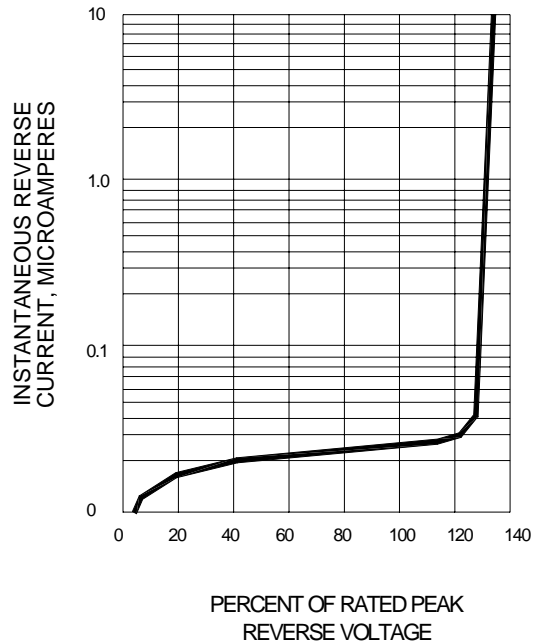


FIG. 4-TYPICAL REVERSE CHARACTERISTICS



SEMTECH ELECTRONICS LTD.
(Subsidiary of Sino-Tech International Holdings Limited, a company listed on the Hong Kong Stock Exchange, Stock Code: 724)

