



Saves Your Energy

# Inspection windows

Technical specification  
Rev. A/15.1.2014



VMA2



VMA1519

## Inception windows

Product code	Number of modules	Dimensions H x W x D (mm)	Free opening W x H (mm)
VMA2	2	77 x 59 x 25/31	43 x 49
VMA4	4	77 x 94 x 25/31	78 x 49
VMA6	6	77 x 130 x 25/31	114 x 49
VMA8	8	77 x 163 x 25/31	147 x 49
VMA10	10	77 x 200 x 25/31	182 x 49
VMA12	12	77 x 223 x 25/31	217 x 49

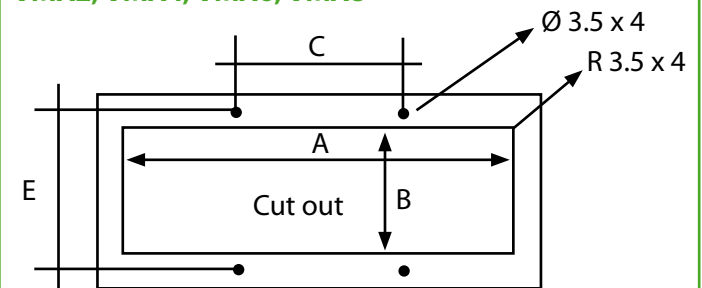
## Cut out, see picture on the right

Product code	A	B
	Width (mm)	High (mm)
VMA2	49	55
VMA4	84	55
VMA6	120	55
VMA8	152	55
VMA10	190	55
VMA12	223	55

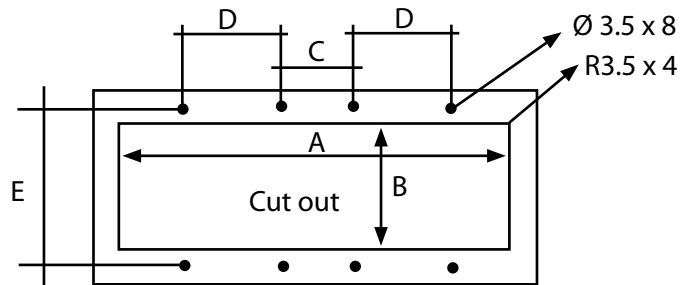
## Screw holes, see picture on the right

Product code	C	D	E
	(mm)	(mm)	(mm)
VMA2	43	-	67
VMA4	70	-	67
VMA6	114	-	67
VMA8	140	-	67
VMA10	35	70	67
VMA12	50	82	67

## VMA2, VMA4, VMA6, VMA8



## VMA10, VMA12



## VMA1519

### Inception window

Product code	Number of modules	Dimensions H x W x D (mm)	Free opening W x H (mm)
VMA1519	-	190 x 150 x 10	113 x 153

### Cut out, see picture on the right

Product code	A	B
	Width (mm)	High (mm)
VMA1519	162	122

### Screw holes, see picture below

Product code	C	D	E
	(mm)	(mm)	(mm)
VMA1519	100	35	130

