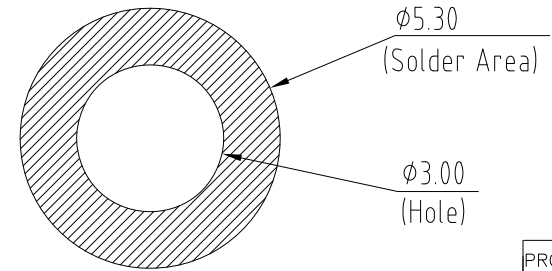
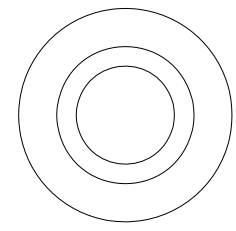
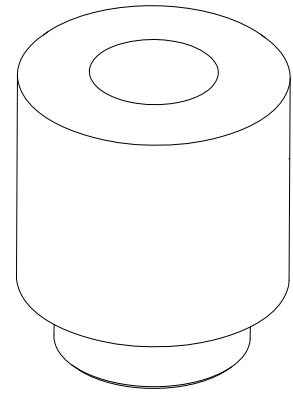
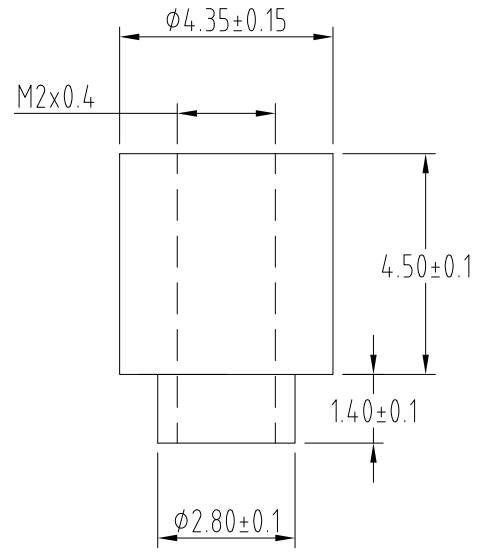



1 2 3 4 5 6 7 8 9 10

A  
B  
C  
D  
E  
F

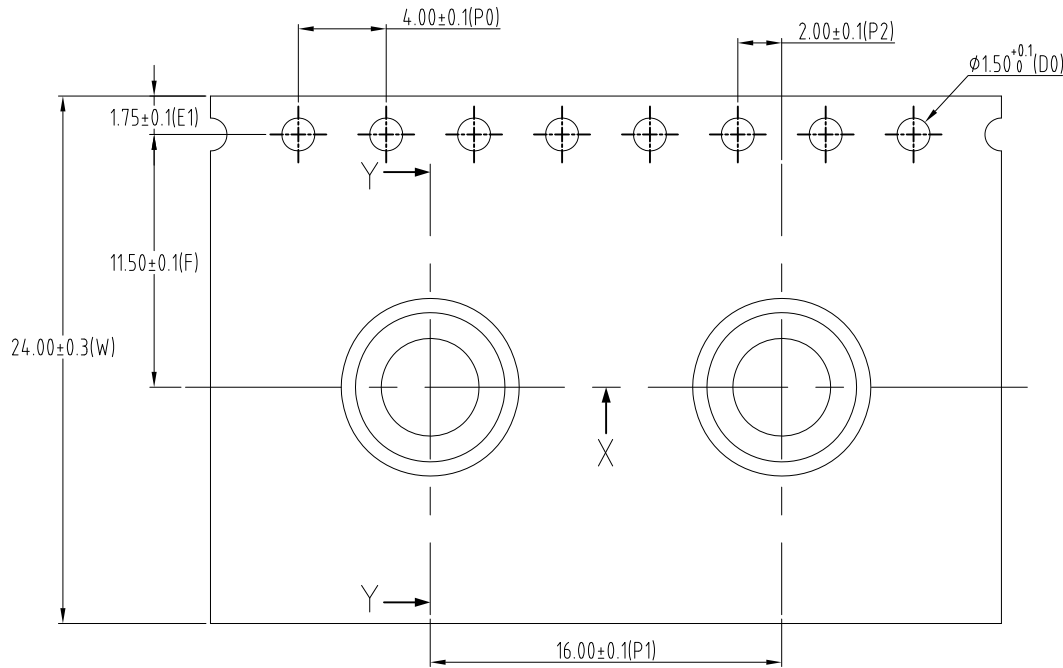
NOTE :  
 1.Material: Brass  
 2.Plate : Tin  
 3.The surface should be clean  
 4.Dimension : 4.5(H)-4.35(φ)-M2



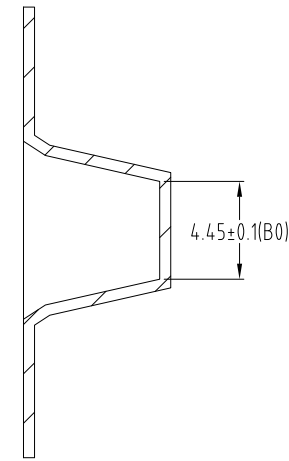
PROPRIETARY NOTE: This document contains confidential information and proprietary to Rego Electronics and shall not be reproduced or disclosed to other documents or used for any purpose other than that for which was obtained without the expressed written consent of Rego Electronics.			
.X ± 0.30	APPROVED: Chris	 <a href="http://www.rego.com.tw">http://www.rego.com.tw</a>	
.XX ± 0.20	CHECKED: Andy		
.XXX ± 0.15	DRAWN: Vic		
X° ± 3'	UNITS: mm	SCALE: NONE	TITLE: Stand Off Ø4.35 x 5.90mm (H:4.5) PART NO: SO-M20H45D435 SHEET: 1 OF 2

A	05.11.2019
REV	DATE

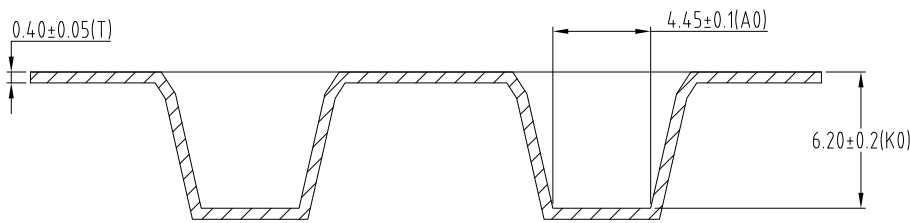
1 2 3 4 5 6 7 8 9 10



1. Part conforms to EIA-481-D standards.
2. All dimensions in millimetres unless otherwise stated.
3. Material : Conductive polystyrene.
4. Packing length for 22" reel : 31.0 Meters. (1:3)
5. Component packing to 13" reel : 600 pcs.



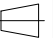


SECTION Y-Y



SECTION X-X

0	21.02.2018
REV	DATE

<b>PROPRIETARY NOTE:</b> This document contains confidential information and proprietary to Rego Electronics and shall not be reproduced or disclosed to other documents or used for any purpose other than that for which was obtained without the expressed written consent of Rego Electronics.		
.X ± 0.30	APPROVED: Chris	 <a href="http://www.rego.com.tw">http://www.rego.com.tw</a>
.XX ± 0.20	CHECKED: Andy	
.XXX ± 0.15	DRAWN: Vic	
X° ± 3°		
  UNITS: mm	SCALE: NONE	TITLE: Stand Off Ø4.35 x 5.90mm (H:4.5) PART NO: SO-M20H45D435 SHEET: 2 OF 2

1 2 3 4 5 6 7 8 9 10

A

B

C

D

E

F

A

B

C

D

E

F

1 2 3 4 5 6 7 8 9 10