

### → 6B/10B/16B/24B

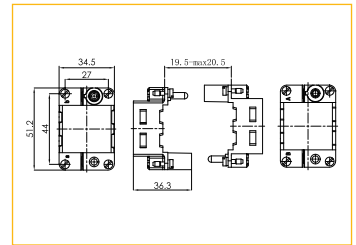
技术参数	Technical Parameter
模块数量	Number of Modules 2, 3, 4, 6
接地线	Ground Wire
功率线	Power Line
	4-10mm <sup>2</sup> 选配 Choosing PE-E16, 可扩展到 Extended To 16mm <sup>2</sup> 选配 Choosing PE-E25, 可扩展到 Extended To 25mm <sup>2</sup> (详见 Page P10-20页), 仅适配高结构外壳或OM Only For High Structure Housings or OM
信号线	The Signal Line
	AWG 12-8 1-2.5mm <sup>2</sup> 18-14
材料	Material 压铸锌合金 Die Cast Zinc Alloy
工作温度范围	Temperature Range -40 C ... +125 C
可拔插次数	Mating Cycles ≥ 500

Identification	Product Model	Order No.	Dimensions mm
----------------	---------------	-----------	---------------

#### 6B 活动框架 / 6B Activity Framework



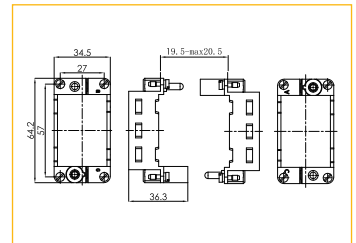
H06B-02-M-1	1 007 05 000001
H06B-02-F-1	1 007 05 000002



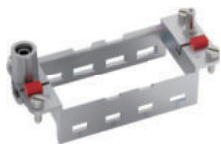
#### 10B 活动框架 / 10B Activity Framework



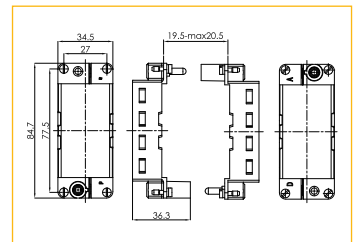
H10B-03-M-1	1 007 05 000003
H10B-03-F-1	1 007 05 000004



#### 16B 活动框架 / 16B Activity Framework



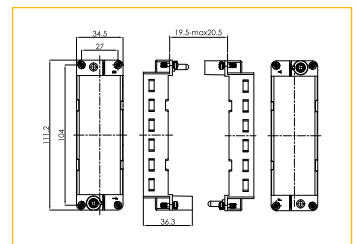
H16B-04-M-1	1 007 05 000005
H16B-04-F-1	1 007 05 000006



#### 24B 活动框架 / 24B Activity Framework



H24B-06-M-1	1 007 05 000007
H24B-06-F-1	1 007 05 000008



## → 6B/10B/16B/24B

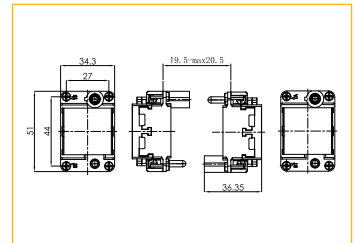
技术参数	Technical Parameter	
模块数量	Number of Modules	2, 3, 4, 6
接地线	Ground Wire	
功率线	Power Line	4-10mm <sup>2</sup> 选配 Choosing PE-E16, 可扩展到 Extended To 16mm <sup>2</sup> 选配 Choosing PE-E25, 可扩展到 Extended To 25mm <sup>2</sup> (详见 Page P10-20页), 仅适配高结构外壳或OM Only For High Structure Housings or OM
		AWG 12-8
信号线	The Signal Line	1-2.5mm <sup>2</sup>
		18-14
材料	Material	压铸锌合金 Die Cast Zinc Alloy
工作温度范围	Temperature Range	-40 C...+125 C
可拔插次数	Mating Cycles)	≥500

Identification	Product Model	Order No.	Dimensions mm
----------------	---------------	-----------	---------------

### 6B 活动框架 / 6B Activity Framework



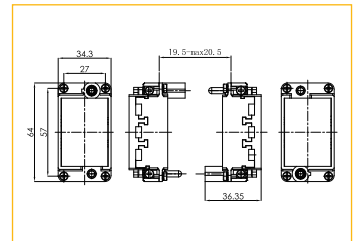
H06B-02-M-2	1 007 05 000009
H06B-02-F-2	1 007 05 000035



### 10B 活动框架 / 10B Activity Framework



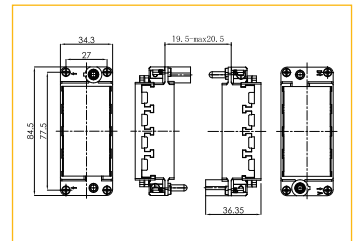
H10B-03-M-2	1 007 05 000010
H10B-03-F-2	1 007 05 000036



### 16B 活动框架 / 16B Activity Framework



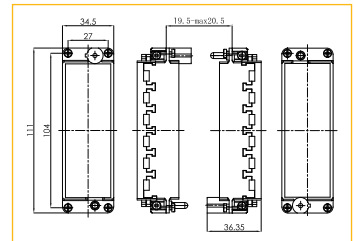
H16B-04-M-2	1 007 05 000011
H16B-04-F-2	1 007 05 000037



### 24B 活动框架 / 24B Activity Framework



H24B-06-M-2	1 007 05 000012
H24B-06-F-2	1 007 05 000038



## → 6B/10B/16B/24B

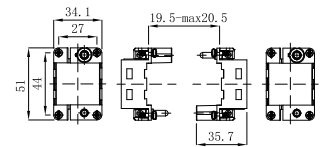
技术参数	Technical Parameter	
模块数量	Number of Modules	2, 3, 4, 6
接地线	Ground Wire	
功率线	Power Line	4-10mm <sup>2</sup> 选配 Choosing PE-E16, 可扩展到 Extended To 16mm <sup>2</sup> 选配 Choosing PE-E25, 可扩展到 Extended To 25mm <sup>2</sup> (详见 Page P10-20页), 仅适配高结构外壳或OM Only For High Structure Housings or OM
		AWG 12-8
信号线	The Signal Line	1-2.5mm <sup>2</sup>
		18-14
材料	Material	压铸锌合金 Die Cast Zinc Alloy
工作温度范围	Temperature Range	-40 C ... +125 C
可拔插次数	Mating Cycles)	≥500

Identification	Product Model	Order No.	Dimensions mm
----------------	---------------	-----------	---------------

### 6B 活动框架 / 6B Activity Framework



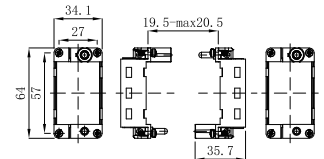
H06B-02-M-3	1 007 05 0000041
H06B-02-F-3	1 007 05 0000042



### 10B 活动框架 / 10B Activity Framework



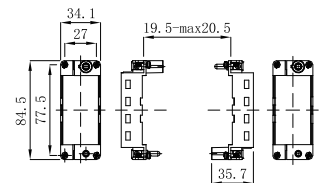
H10B-03-M-3	1 007 05 0000043
H10B-03-F-3	1 007 05 0000044



### 16B 活动框架 / 16B Activity Framework



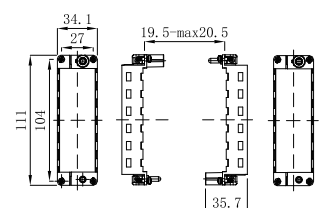
H16B-04-M-3	1 007 05 0000045
H16B-04-F-3	1 007 05 0000046



### 24B 活动框架 / 24B Activity Framework



H24B-06-M-3	1 007 05 0000047
H24B-06-F-3	1 007 05 0000048



→ 10A

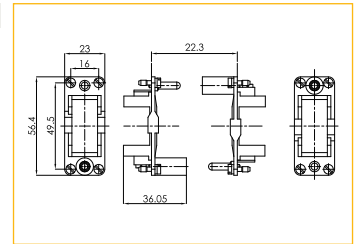
技术参数	Technical Parameter	
模块数量	Number of Modules	适用单个模块 Frame For 1 Module
接地线	Ground Wire	
材料	Material	压铸锌合金 Die Cast Zinc Alloy
工作温度范围	Temperature Range	-40 C...+125 C
可拔插次数	Mating Cycles	≥500

Identification	Product Model	Order No.	Dimensions mm
----------------	---------------	-----------	---------------

10A 活动框架 / 10A Activity Framework



H10A-01-M-1	1 007 05 0000013
H10A-01-F-1	1 007 05 0000014



Filling Module

Polycarbonate

Identification	Product Model	Order No.	Dimensions mm
----------------	---------------	-----------	---------------

Dummy Module



HM-000-N-1	1 007 04 0000118
------------	------------------

