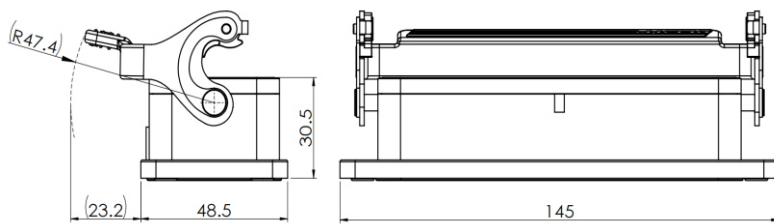


Size 24B Panel mounting base, stainless steel cover with single locking latch



Typecode H24B-OM-1LS
ID 1 007 01 0001026

Technical Data

Product Properties

| | |
|-------------------------|--|
| Series | Size 24B |
| Mating with | HE-024, HEE-046, HDD-064, HDD-108, HK-004/8 |
| Housing type | Panel mounting base |
| Cable outlets direction | Bottom open ends |
| Locking type | Single locking lever |
| Installation mode | Panel mounting |
| Protection Class | IP67 |
| Impact strength | IK08 |
| Temperature range | -40 °C ... 125 °C |
| Standard | DIN EN 175301-801 |

Insert

| | |
|------------------|-------------------|
| Housing material | Die-cast aluminum |
| Color | Gray (RAL 7037) |
| Latch | Stainless steel |
| Seal | NBR, black |

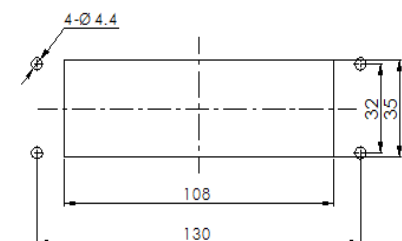
Commercial data

| | |
|-------------------|-------|
| Weight | 168 g |
| Packaging unit | 1 pc |
| Country of origin | CN |

Features

- Die casting of aluminum
- Stainless steel locking latch
- Bottom open ends
- Surface fixed installation
- NBR, black
- Resistant to salt spray
- Approval: UL94-V0
- RoHS-compliant

Mounting-hole Size



*The design data are listed here, and the changes to the product are not described here. For unfinished matters, please contact customer service. It is the user's responsibility to verify functionality, compliance with applicable laws and instructions, and electrical safety in specific applications.