

GK35 series

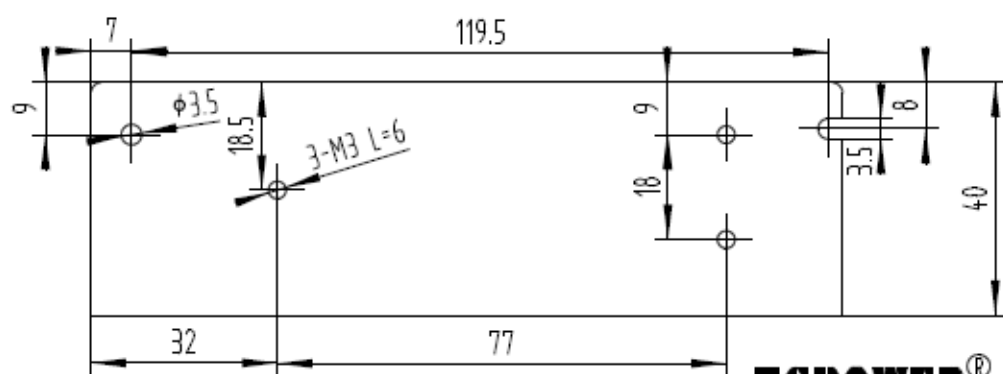
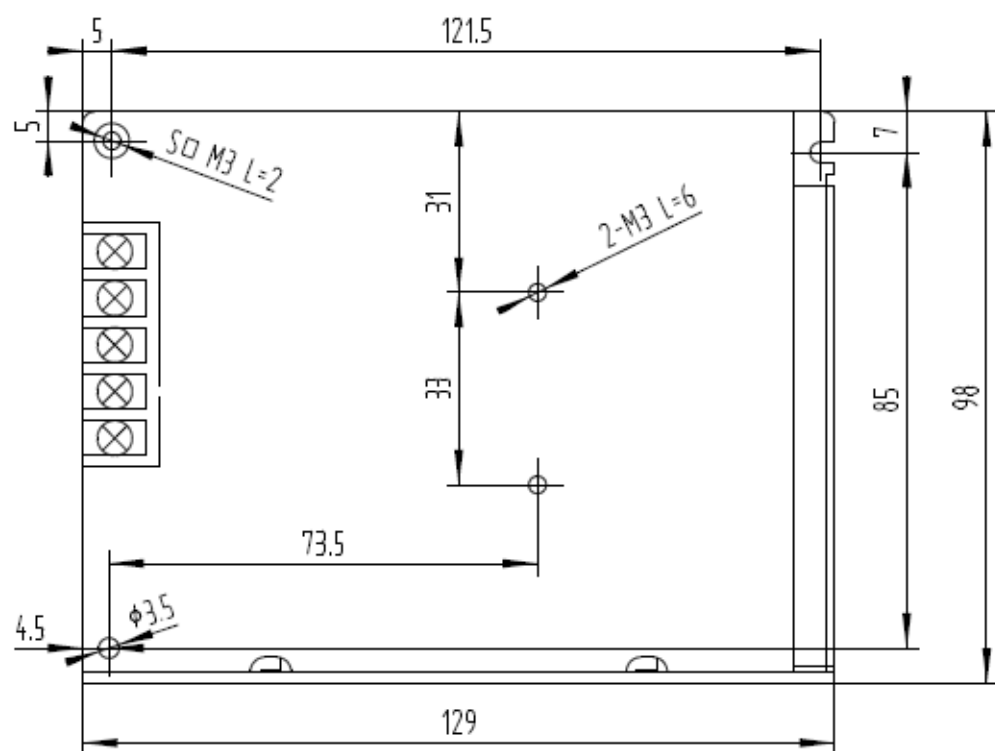
■ Features

- Universal AC input/Full range
- Class II power
- Protections : Short circuit /overload/over voltage
- cooling by free air convection
- 100% full load burn-in test
- Approvals : UL/CE/CCC
- 1 year warranty



SPECIFICATION

Model		GK-35-5	GK-35-12	GK-35-24	GK-35-48
Output	DC Voltage	5V	12V	24V	48V
	Rated Current	7A	3A	1.5A	0.8A
	Current Range	0-7A	0-3A	0-1.5A	0-0.8A
	Rated Power	35W	36W	36W	38.4A
	Ripple & Noise	75mVp-p	100mVp-p	150mVp-p	150mVp-p
	Voltage ADJ. Range	4.75-5.5V	10.8-13.2V	21.6-26.4V	43.2-52.8V
	Voltage Tolerance	±1.5%	±1.0%	±1.0%	±1.0%
	Line Regulation	±0.5%	±0.5%	±0.5%	±0.5%
	Load Regulation	±1.0%	±0.5%	±0.5%	±0.5%
	Set up , rise time	300ms, 50ms/230Vac at full load			
	Hold Time	30ms/230Vac at full load			
Input	Voltage Range	85~264Vac 120~370Vdc			
	Frequency Range	47~63Hz			
	Efficiency	75% 115Vac	81% 115Vac	84% 115Vac	85% 115Vac
	AC current	0.6A/115Vac 0.35A/230Vac			
	Inrush Current	Cold start 18A/115Vac 36A/230Vac			
	Leakage Current	<0.75mA 240Vac			
Protection	Over Load	105%-150% rated output power			
		Hiccup mode, recovers automatically after fault condition is removed .			
	Over Voltage	5.75~6.75V	13.8~16.2V	27.6~32.4V	55.2~64.8V
		Hiccup mode, recovers automatically after fault condition is removed .			
Environment	Working temp.	-10~ +60℃ (refer to output derating curve)			
	Working Humidity	20~90%RH non-condensing			
	Storage Temp., Humidity	-20~+85℃ , 10~95% RH			
	Temp. Coefficient	±0.03%/℃ (0~50℃)			
	Vibration	10~500Hz, 2G 10min./1cycle , period for 60min , each along X, Y, Z axes			
Safety & EMC	Safety Standard	UL1012, ,UL60950-1 approved .			
	Withstand Voltage	I/P-O/P:3KVac , I/P-FG:1.5KVac, O/P-FG:0.5KVac			
	Isolation Resistance	I/P-O/P,I/P-FG,O/P-FG:100M Ohms/500Vdc			
	EMI Conduction& Radiation	Compliance to EN55022 Class B			
	Harmonic Current	Compliance to EN61000-3-2,-3			
	EMS Immunity	Compliance to EN61000-4-2,3,4,5 ,EN55024			
Others	MTBF	50,000hours min at 25℃			
	Dimension	129x98x40			
	Weight	0.39KGS/PC			



HCPOWER®

G K 3 5