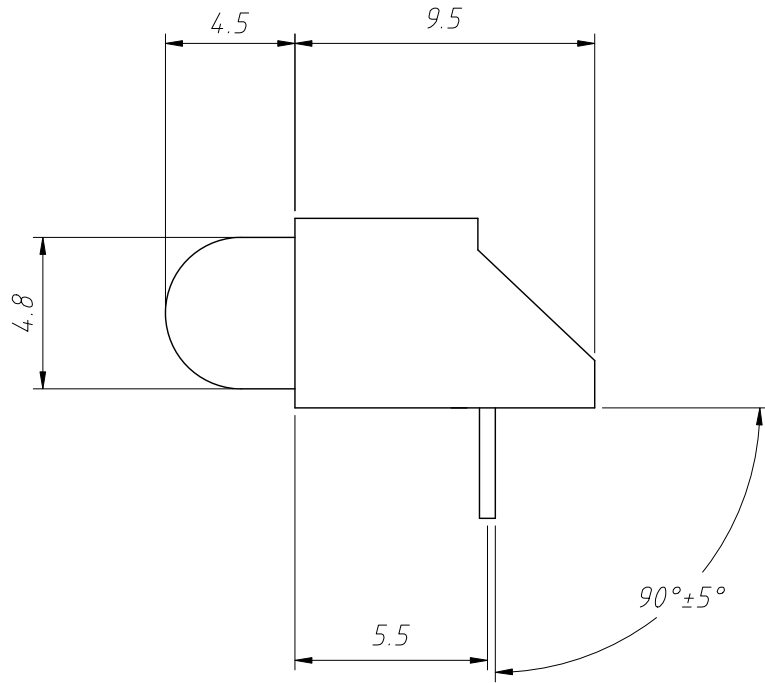
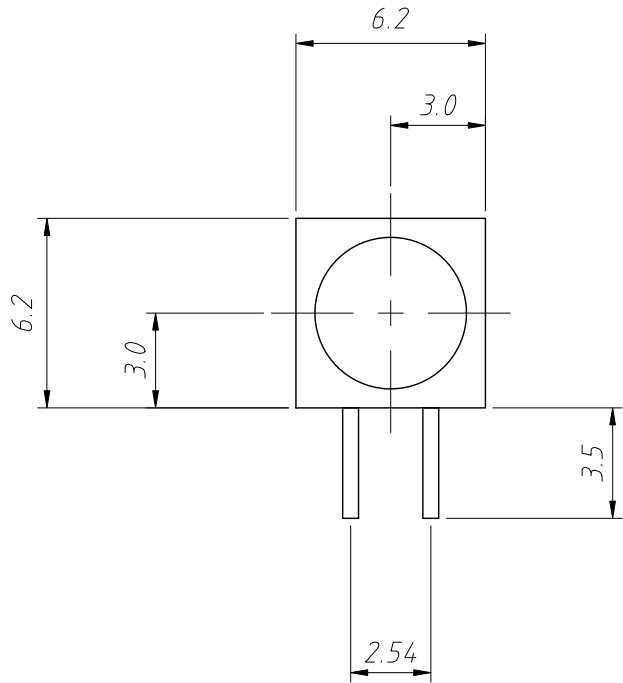


1
RoHS Compliance



Order Information:
 L-KLS9-0131-LED-5-Y

 L: RoHS
 Series
 5mm Round LED
 Emitting color:
 Y=Yellow G=Green R=Red

- Notes:
- 1.All Dimensions are in millimeters
 - 2.Tolerance is $\pm 0.25\text{mm}$ unless otherwise noted
 3. Protruded resin under flange is 1.0mm max
 4. Lead spacing is measured where the leads emerge from the package
 - 5.Specifications are subject to change without notice

Material: InGaN
 Lens: Tinted Diffused Type
 Emitting color: Yellow

ANGLE TOLERANCE	PROJECTION	Description:	
$\pm 3^\circ$		5mm Round LED	
GENERAL TOLERANCE	UNITS	mm	KLS P/N:
x.x ± 0.30	SHEET SIZE	A4	4:1
x.xx ± 0.20	Draw:	Daniel	2022-05-15
x.xxx ± 0.10	Check:	Daniel	2022-05-15
		NingBo KLS ELECTRONIC CO.,L TD.	