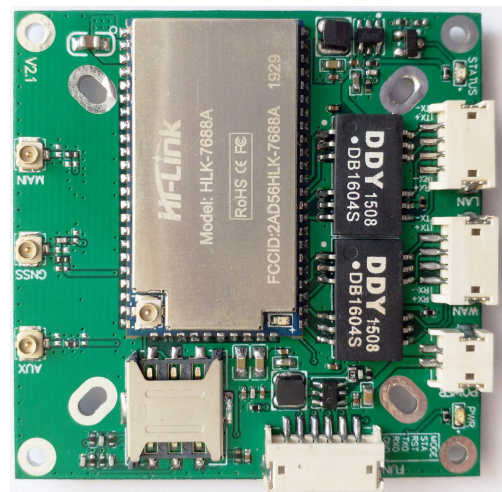




Shenzhen Hi-Link Electronic Co., Ltd.

HLK-GD01 User Manual



Contents

1. Product description	1
2. Application area.....	1
3. Product technical specifications.....	2
4. Hardware description.....	3
5. Network port / 4G working mode.....	4
6. Simple internet usage instructions.....	4

1. Product description

- Internet access: 3G / 4G dial-up Internet access, DHCP / STATIC, IP / PPPOE
- WiFi rate: 300Mbps
- 4G speed: 150Mbps
- Network interface: 2 100M network interfaces
- Number of connections: 32 terminals
- Card: 3G / 4G card can be inserted
- 4G full Netcom
- Routing function
- 4G to network cable
- 4G to WiFi
- SIM card plug and play

2. Application area

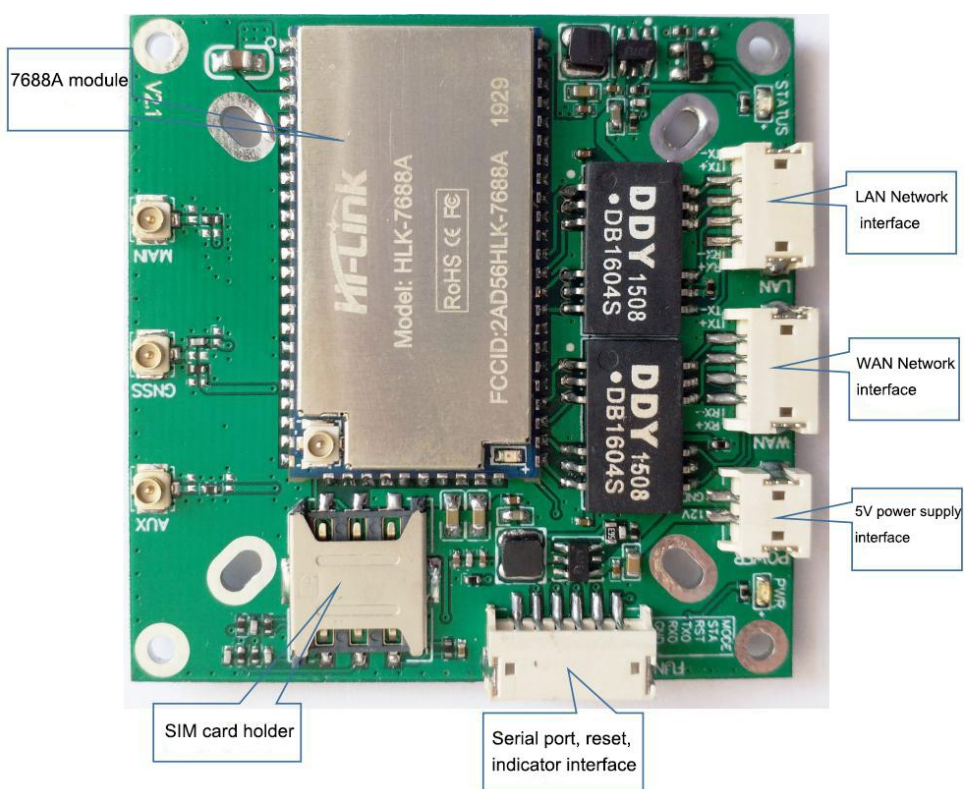
- Smart home equipment
- IoT control
- Industrial control
- Remote camera
- Outdoor Internet
- Network control equipment
- Internet access

3. Product technical specifications

Table 1 Product technical specifications

Product Model	Model	HLK-GD01
WiFi parameters	Wireless standard	IEEE 802.11 b/g/n
	Frequency range	2.412GHz-2.484GHz
	Wifi rate	300Mbps
	Connection	32 terminals
	Transmit power	802.11b: +17 +/-2dBm (@11Mbps)
		802.11g: +17 +/-2dBm (@54Mbps)
		802.11n: +13 +/-2dBm (@HT20,HT40- MCS7)
	Receiving sensitivity	802.11b: <-88.4 dBm (@11Mbps ,CCK)
802.11g: <-75.7dBm (@54Mbps, OFDM)		
802.11n:< -73.6dBm (@HT20, MCS7)		
Antenna type	External rod antenna	
Hardware parameters	Hardware interface	2 100M network interfaces
	Work voltage	4.2-5.5V
	Wireless antenna	Single antenna
	Working temperature	-40℃~80℃
	Storage environment	Temperature: <40℃, Relative humidity: <90%R.H.
4G parameters	Supported network	China Unicom (CUCC): 3G/4G China Mobile (CMCC): 3G/4G China Telecom (CTCC): 3G/4G
	4G Rate	150Mbps
	Supported frequency	China Unicom (CUCC): Full frequency China Mobile (CMCC): Full frequency China Telecom (CTCC): Full frequency
Router function	Function	Firewall PPPOE / static IP / DHCP MAC / IP / PORT filtering DMZ settings

4. Hardware description

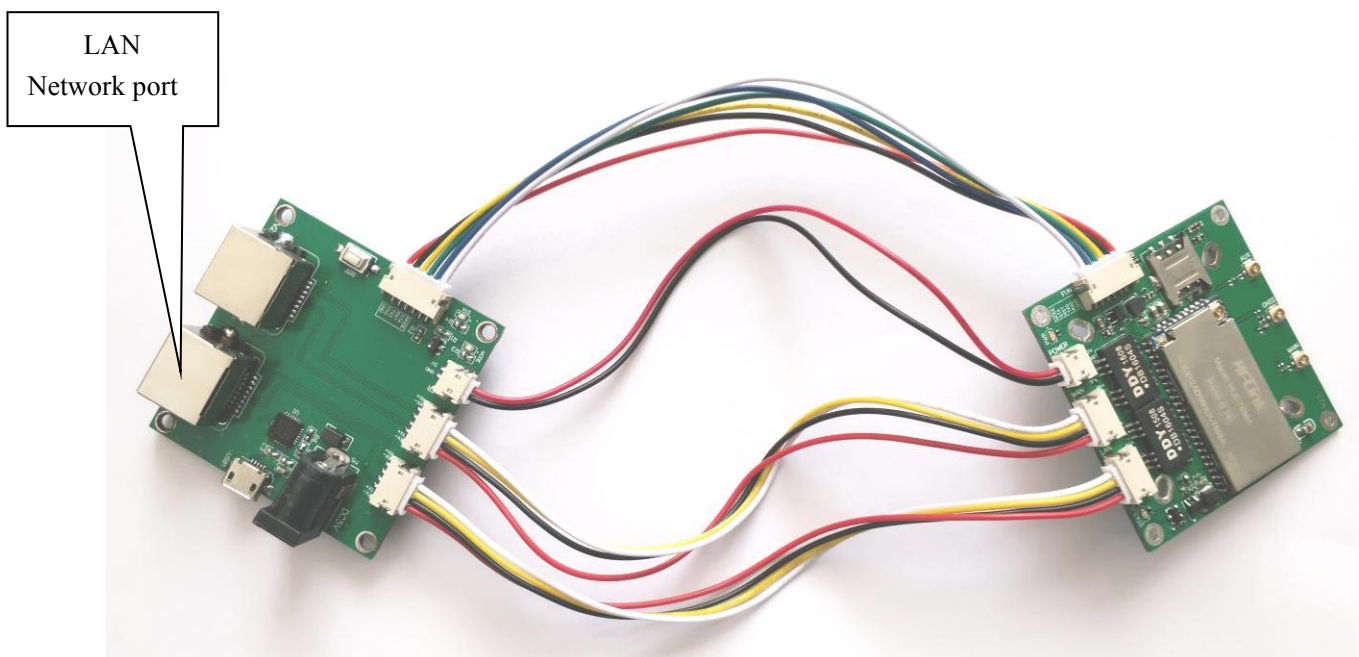


5. Network port / 4G working mode

When the WAN port of the router is connected to the network cable and obtained the IP of the superior route, the router will automatically disconnect the 4G network and use the network port to access the Internet to save 4G traffic of traffic card; when the WAN port is not connected to the network cable, the router will automatically open 4G Function to use 4G network for Internet access.

6. Simple internet usage instructions

- Insert the SIM card that can access the Internet into the SIM card holder in the correct direction, and insert the antenna into the IPX socket of MAIN
- Connect a 5V power supply to 5V power supply interface
- Connect the LAN network port to surf the internet by computer or Internet equipment



Status display description of STATUS lamp

Slow flashing (200ms high / 1800ms low)	Finding Network Status
Slow flashing (1800ms high / 200ms low)	Standby Status
Fast flashing (125ms high / 125ms low)	Data transmission mode