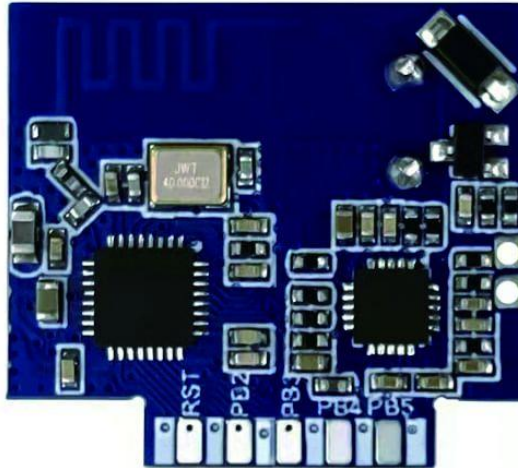


HLK-VB10

Local Voice+WIFI Bluetooth Module

multilingual language + local voice control + remote control



Introduction:

HLK-VB10 is a small size, high-performance local voice control + WiFi module , which launched by Hi-link Electronics for a large number of voice + WiFi remote control scenarios and products. It supports manual control, voice switch, voice control network distribution, WiFi remote control, etc. The module can be widely and quickly applied to smart home, all kinds of smart home appliances, sockets, 86 boxes, lamps, security and lighting products. The program supports local voice command recognition in multiple languages, and can freely customize wake-up words and command words in various languages.

Features:

- Support up to 8 GPIO
- 3 UART
- Support 1 Mic input (1.0mm pitch connector)
- Support 1 passive buzzer (onboard)
- Reliable recognition at a distance of 5 meters in the home environment, with a comprehensive recognition rate of 95%
- Support multi-languauge
- Support Bluetooth distribution network

Multilingual Language

At present, HLK-VB10 support 17 kinds of language, and the language will be continue to be updated. Chinese / Cantonese / English / Brazilian Portuguese / South American Spanish / Arabic / Russian / Ukrainian / German / Japanese / Korean / Vietnamese / Thai / Indonesian / Hindi / Indian English / Australian English are supported.

English

- wake up words: Tuya Smart
- Distribution network words: Start pairing
- Command words: Turn on the plug / turn off the plug

Brazilian Portuguese

- wake up words: Tuya Smart
- Distribution network word: Comece o emparelhamento
- Command words: Ligue o plugue / Desligue o plugue

South American Spanish

- wake up words: Tuya Smart
- Distribution network word: Empieza a emparejar
- Command words: Enciende el enchufe / Apaga el enchufe

Japanese

- wake up words: トゥヤスマート
- Distribution network word: ペ어링を開始します
- Command words: プラグをオンにします / プラグをオフにします

Korean

- wake up words: 투야 스마트
- Distribution network word: 페어링 시작
- Command words: 소켓을 엽니다 / 소켓을 끕니다

Vietnamese

- wake up words: Tuya Smart
- Distribution network word: Bắt đầu ghép nối
- Command words: Bật ổ cắm / Tắt ổ cắm

Pin Function

3.3V	Power supply
PB5	UART2_CTS/UART4_RX
GND	Power ground
PB4	UART2_RTS/UART4_TX
PB7	UART1_RX
PB3	PWM3/UART2_RX
PB6	UART1_TX
PB2	PWM2/UART2_TX
PB1	PWM1/UART3_RX
RST	Reset (internally pulled up)
PB0	PWM0/UART3_TX

Product Feature



Adopting the well-known voice algorithm program, the home environment recognition rate reaches **more than 95%**



UART *3 / GPIO * 8 / Analog MIC * 1 / Passive buzzer * 1



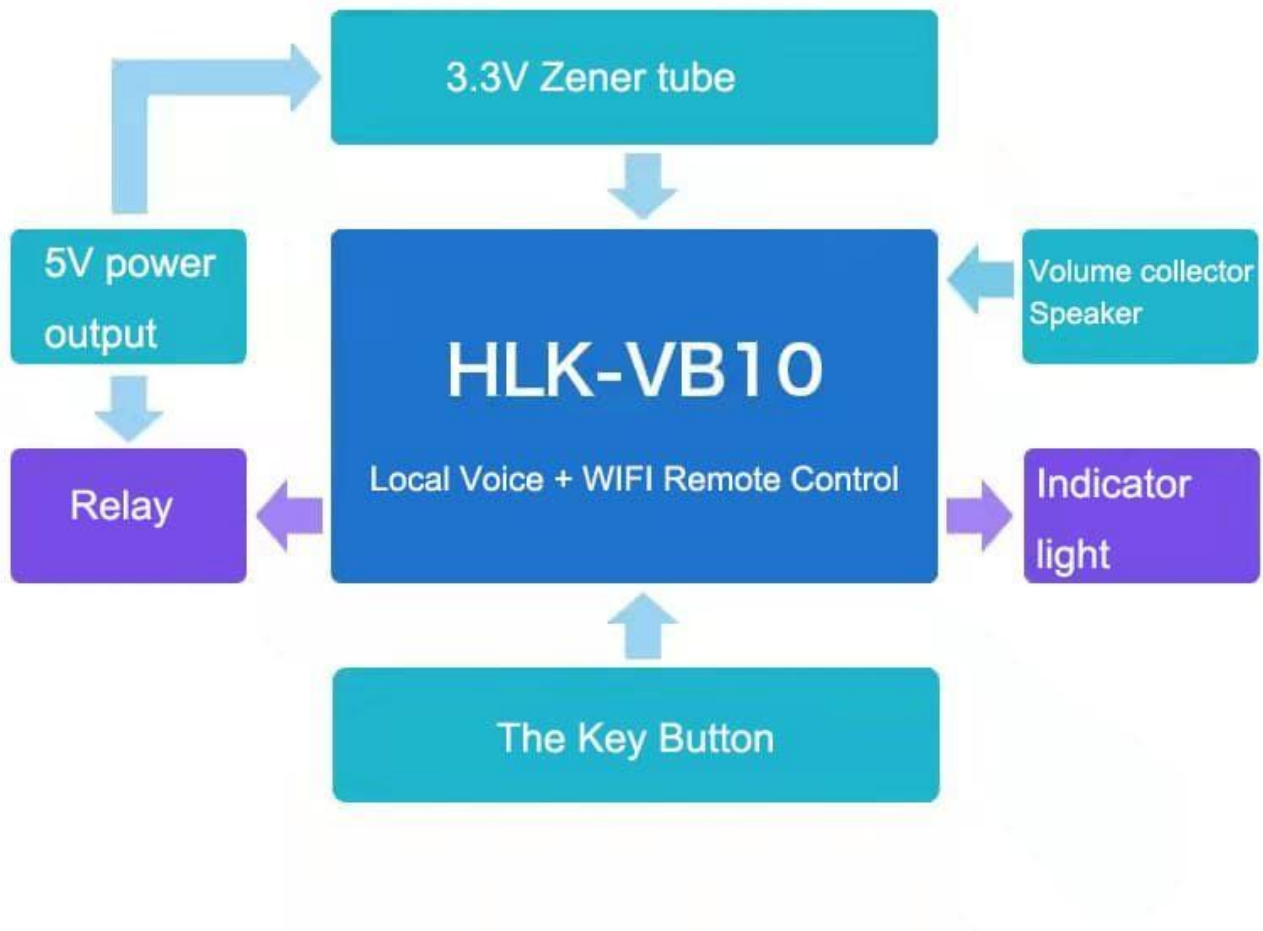
Support **voice and Bluetooth** network configuration
Support **remote** control



Compeletly compatable with Tuya **E2S/WB2S/CB2S**

Product Application Examples

Local Voice +WiFi control relay switch and other scenes



Function schematic

