



SPEC NO.: RFS-007M

Specification

TO:STE516

Model Name: RF SAW FILTER

PART NO: SSF1590W01S3030

CUSTOMER PART NO.:

STRONG ELECTRONICS&TECHNOLOGY LIMITED

Tel:86-510-89881001 Fax: 86-755-84528986 510-89881001-68

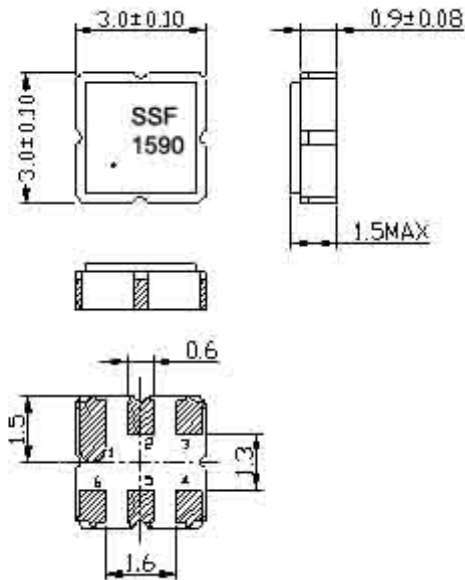
Email:info@strongelectronics.net

www.sawfilter.cn

1. Range:

This specification shall cover the characteristics of SAW filter with Strong's P/N: SSF1590W01S3030

2.Package Dimension



Pin No.	Function
Pin 2	Input
Pin 5	Output
Other	Ground

3. Performance

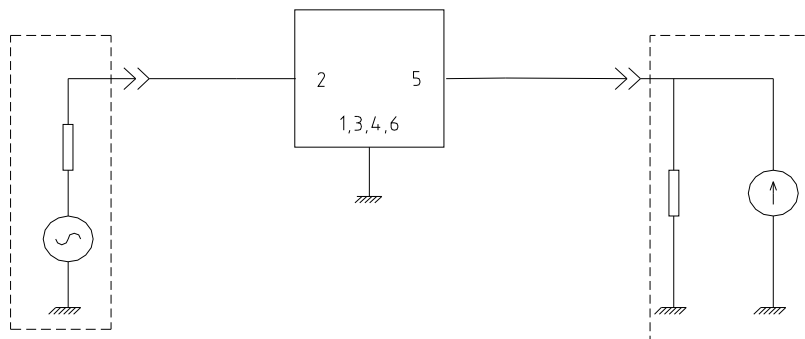
3.1 Maximum:

Item	Value
Operation Temperature Range	-55°C to + 85 °C
Storage Temperature Range	-55°C to + 95 °C
DC Permissive Voltage	3V DC Max.
Maximum Input Power	10 dB

3.2 Electronic Specification:

Item	Min.	Typ.	MAX.
Center Frequency (fc)	-	1590MHz	-
Insertion Loss	-	2.2 dB	4.0 dB
Amplitude ripple	-	1.0 dB	1.7 dB
Bandwidth @ -1dB	55MHz	59 MHz	65MHz
Bandwidth @ -20dB	-	97 MHz	125 MHz
Ultimate Rejection	-	50 dB	-
Source impedance	50 Ω		
Load impedance	50 Ω		

3.3 Test Circuit



3.3 Frequency Response

