



SPEC NO.: SFS-109M

SPECIFICATION

TO:STE685

Model Name: SAW FILTER

PART NO: SSF224W02S5050

CUSTOMER PART NO.:

STRONG ELECTRONICS&TECHNOLOGY LIMITED

Tel:86-510-89881001 Fax: 86-755-84528986 510-89881001-68

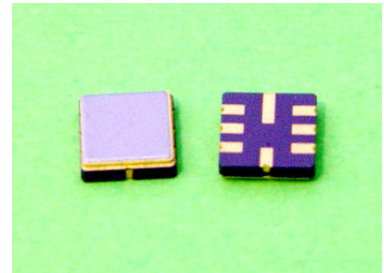
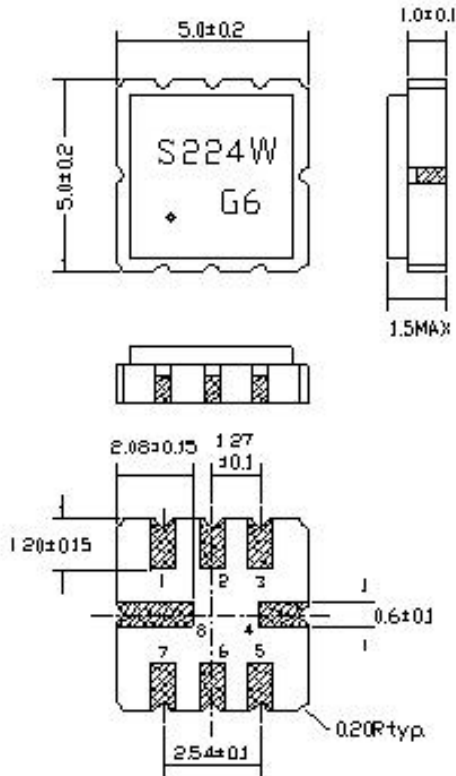
Email:info@strongelectronics.net

www.sawfilter.cn

1. Package Dimension

(S5050)

Unit: mm



Pin No.	Function
Pin 2	Input
Pin 6	Output
Other	Ground

2. Marking

S224W

• G6

(1) Ink Marking or Laser Marking

(2) S: Product code

(3) 224: Model code

(4) W: Series code

(5) • : Pin 1 Identifier

(6) G6: Date code

3. Performance

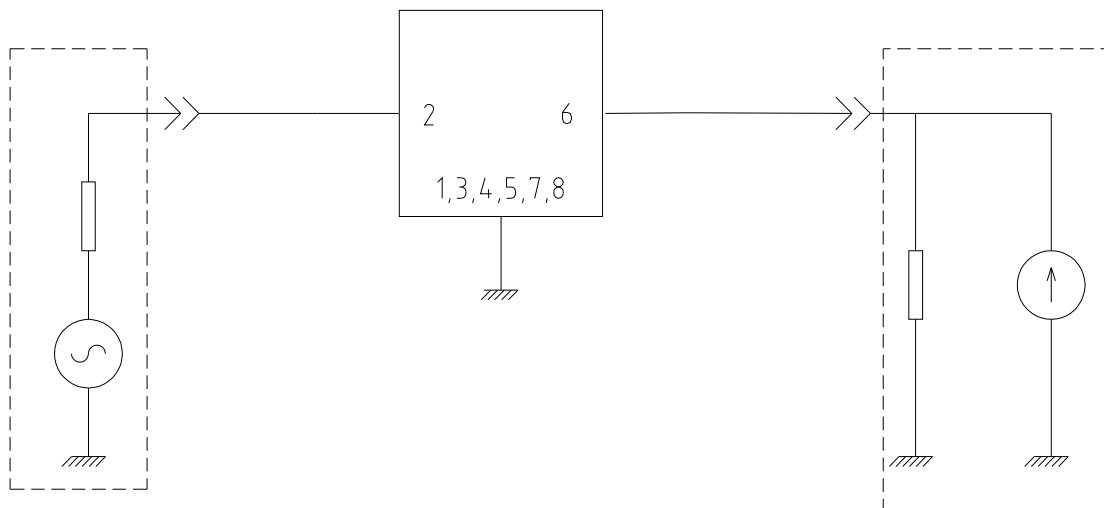
3.1 Maximum Rating

Item	Value
Operation Temperature Range	-10°C to +50°C
Storage Temperature Range	-40°C to +85°C
DC Permissive Voltage	10V DC max.
Maximum Input Power	0 dBm

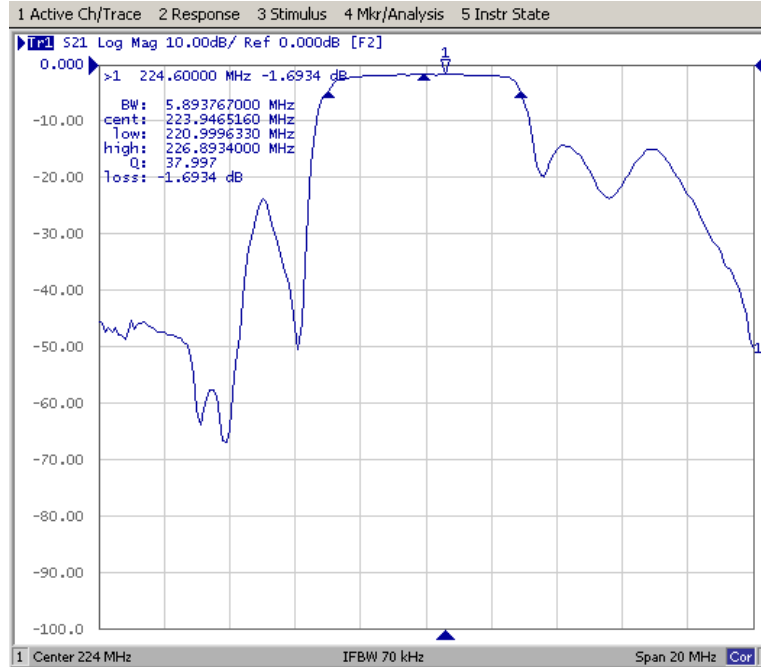
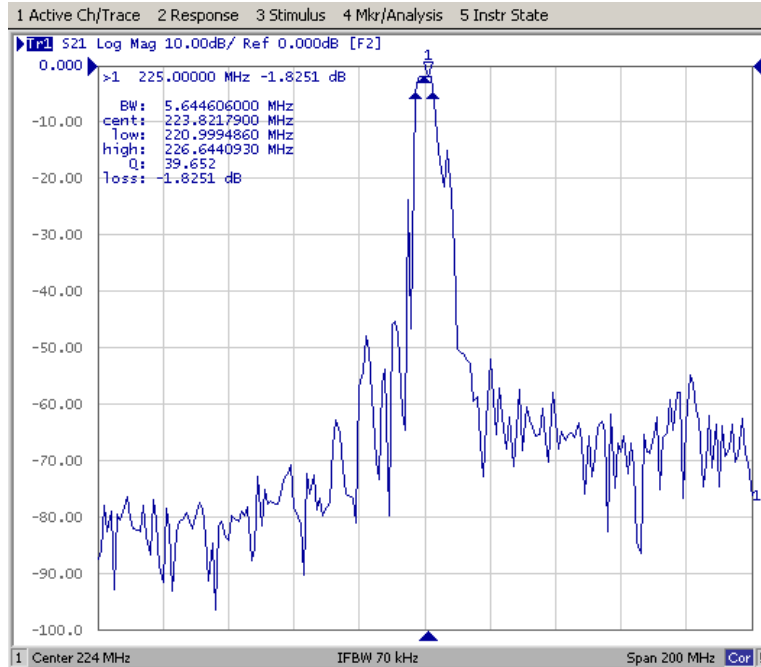
3.2 Electronic Characteristics

Item	Frequency (MHz)	Specification
Center Frequency (fo)	224	
Passband Width	$f_o \pm 2$	
Insertion Loss	Passband	4.5dB Max.
Passband Ripple	Passband	1.5dB Max.
Stop Band Attenuation	$f_o - 100 \sim f_o - 40.8$	50dB Min.
	$f_o + 40.8 \sim f_o + 100$	50dB Min.
Terminating Impedance		50 Ω // 0pF

3.3 Test Circuit



3.3 Frequency Characteristics



© Copyright 2006 STRONG, All Rights Reserved