



SPEC NO.: SFS-008M

SPECIFICATION

TO:STE685

Model Name: SAW FILTER

PART NO: SSF235W02S5050

CUSTOMER PART NO.:

STRONG ELECTRONICS&TECHNOLOGY LIMITED

Tel:86-510-89881001 Fax: 86-755-84528986 510-89881001-68

Email:info@strongelectronics.net

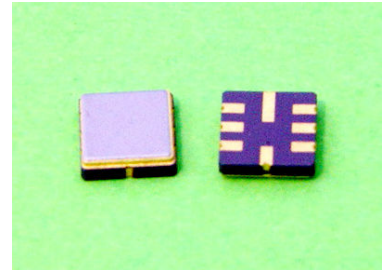
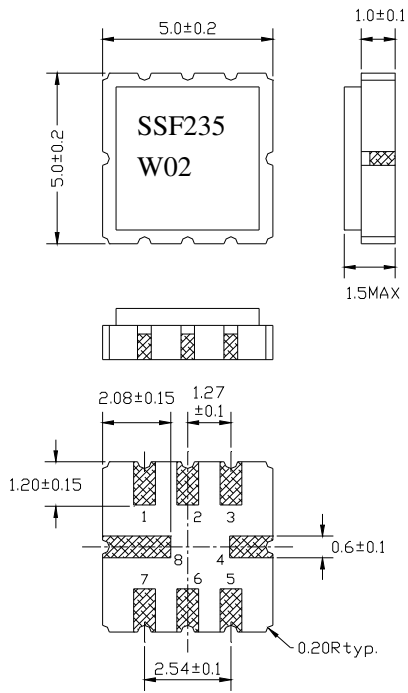
www.sawfilter.cn

1. Package Dimension

2.

(S5050)

Unit: mm



Pin No.	Function
Pin 2	Input
Pin 6	Output
Other	Ground

2. Marking

SSF235
W02
• G6

- (1) SSF: Product Code
- (2) 235: Model code
- (3) 02: Series code
- (4) • : Pin 1 Identifier
- (5) G6: Date code

3. Performance

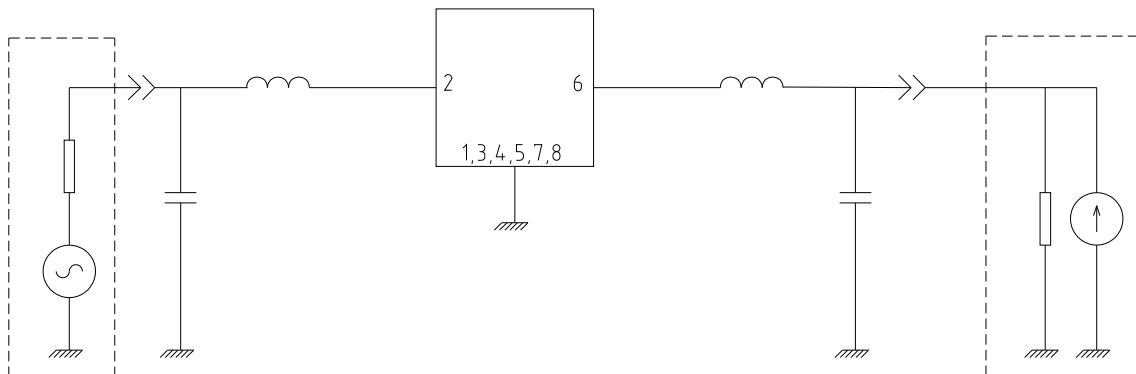
3.1 Maximum Rating

Item	Value
Operation Temperature Range	-10°C to +50°C
Storage Temperature Range	-40°C to +85°C
DC Permissive Voltage	10V DC max.
Maximum Input Power	0 dBm

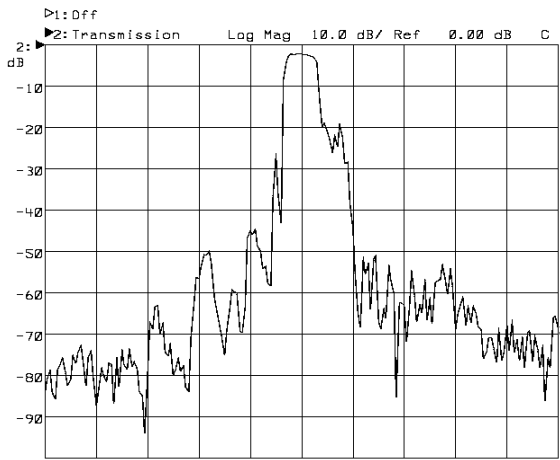
3.2 Electronic Characteristics

Item	Frequency (MHz)	Specification
Center Frequency (fo)	235	
Passband Width	$f_o \pm 2$	
Insertion Loss	Passband	4.5dB Max.
Passband Ripple	Passband	1.5dB Max.
Stop Band Attenuation	$f_o - 100 \sim f_o - 40.8$	50dB Min.
	$f_o - 40.8 \sim f_o + 100$	50dB Min.
Terminating Impedance		50 Ω / 0pF

3.3 Test Circuit

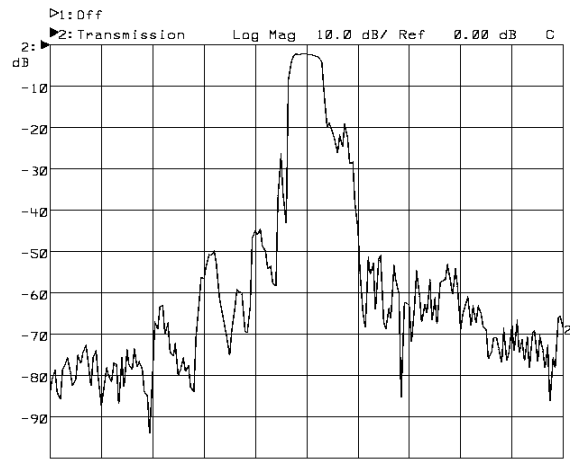


3.3 Frequency Characteristics



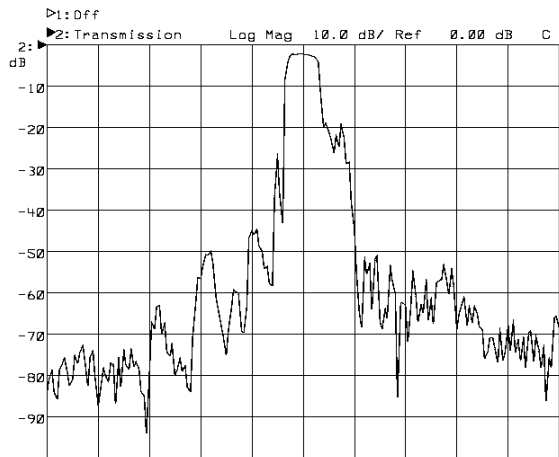
Center 235.000 MHz

Span 100.000 MHz



Center 235.000 MHz

Span 100.000 MHz



Center 235.000 MHz

Span 100.000 MHz