



SPEC NO.: RFS-012M

Specification

TO:STE620

Model Name: RF SAW FILTER

PART NO: SSF869W02S3838

CUSTOMER PART NO.: Murata P/N: SAFCH869MAMOT00R11

STRONG ELECTRONICS&TECHNOLOGY LIMITED

Tel:86-510-89881001 Fax: 86 755-84528986 86-510-89881001-68

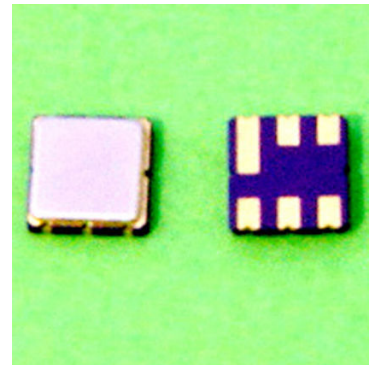
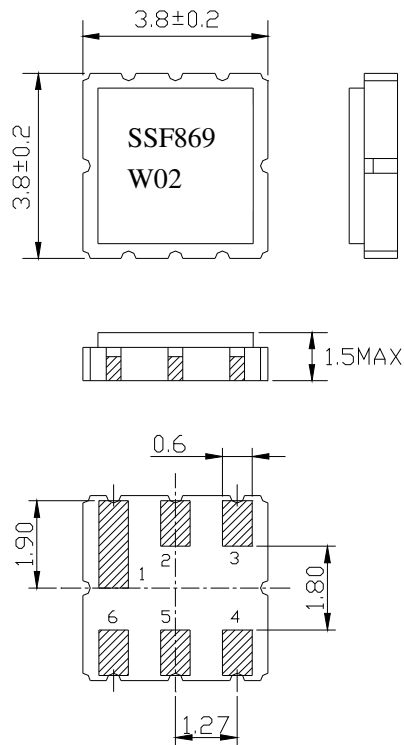
Email:info@strongelectronics.net

www.sawfilter.cn

1. Package Dimension

(S33838)

Unit: mm



Pin No.	Function
Pin 2	Signal
Pin 5	Signal
Other	Ground

2. Marking

SSF869

W02

• G6

(1) S Marking:STRONG

(2) SF869W02: Model code

(3) • : Pin 1 Identifier

(4) G6: Date code

3. Performance

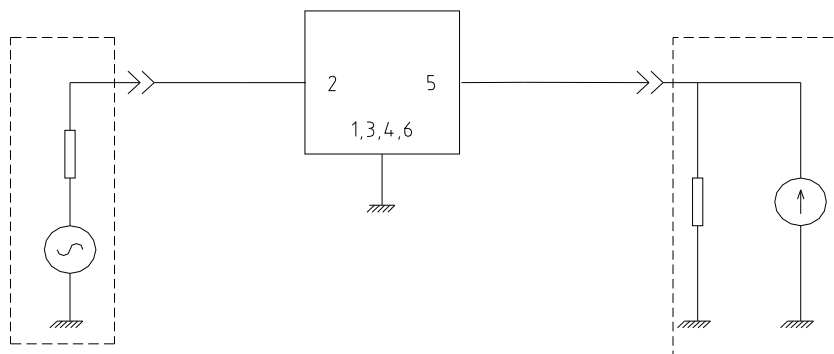
3.1 Maximum Rating

Item	Value
Operation Temperature Range	-40°C to +85°C
Storage Temperature Range	-40°C to +85°C
DC Permissive Voltage	10V DC max.
Maximum Input Power	27 dBm

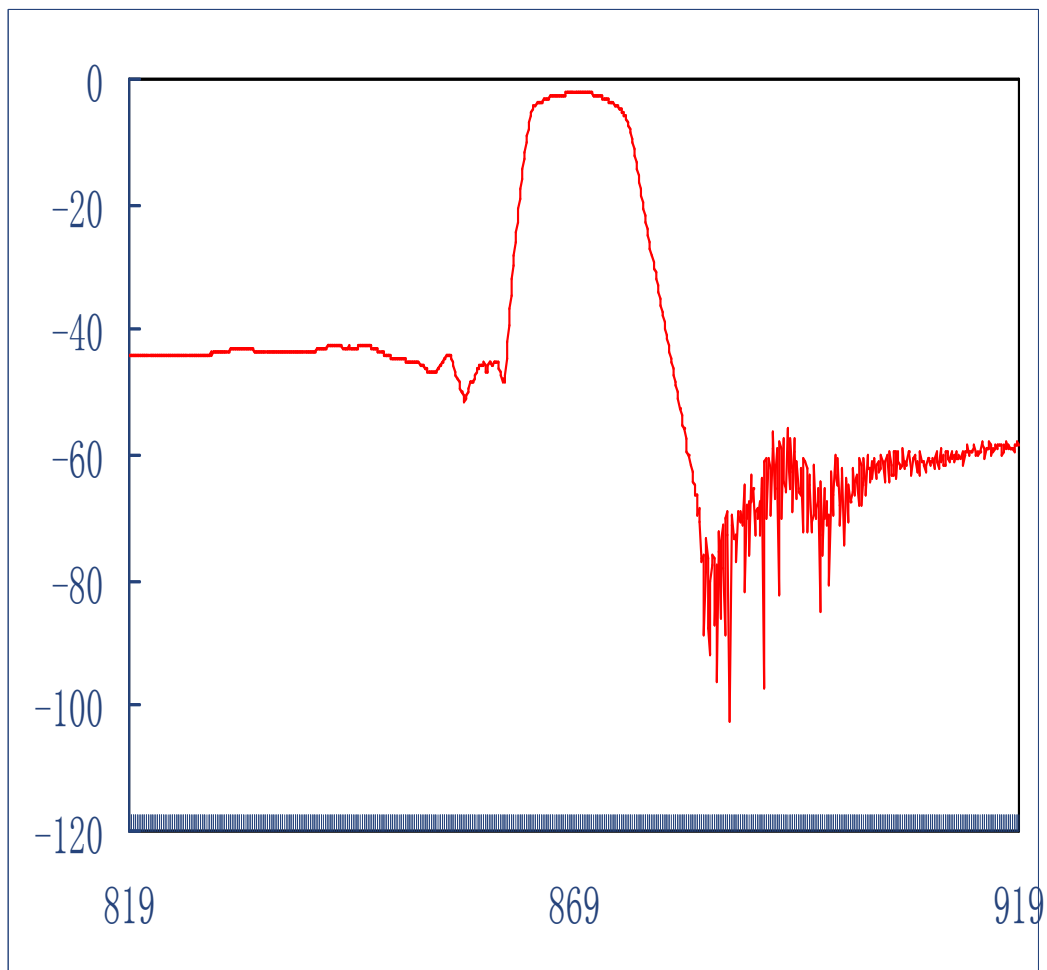
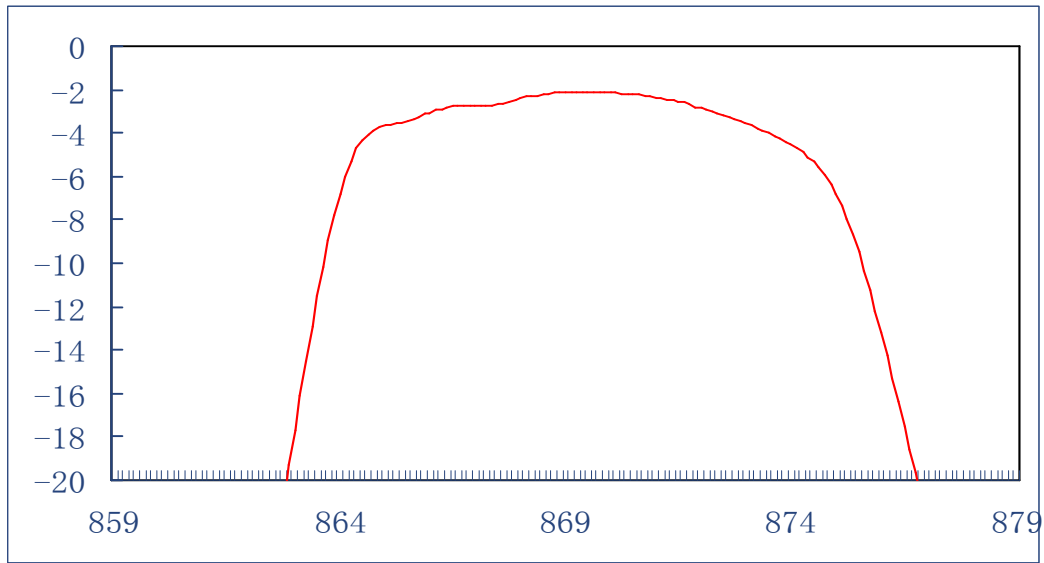
3.2 Electronic Characteristics

Item	Frequency (MHz)	Specification
Center Frequency (fo)	869.0	
Pass Band	868.0 ~ 870.0	
Insertion Loss	868.0 ~ 870.0	3.5 dB max.
Ripple Deviation	868.0 ~ 870.0	1.8 dB max.
Rejection	0 ~ 300.0	45 dB min.
	300.0 ~ 856.0	40 dB min.
	856.0 ~ 858.0	15 dB min.
	879.0 ~ 885.0	15 dB min.
	885.0 ~ 1500.0	48 dB min.
	1500.0 ~ 2000.0	35 dB min.
Temperature Coefficient of Frequency		-31.0 ppm/K
Input Impedance		50 Ω
Output Impedance		50 Ω

3.3 Test Circuit



3.3 Frequency Characteristics



© Copyright 2006 STRONG, All Rights Reserved