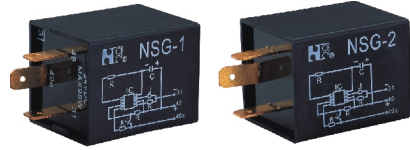


# NSG-1 & NSG-2



30.5×30.5×40

### Features

- Stable electronic timing.
- Wide operating voltage and temperature range.
- Suitable for flash light during car turning.

### Ordering Information

**NSG-1** **A** **Z**  
1 2 3

1 Part number: NSG-1 NSG-2      3 Enclosure: Z: Dust cover  
2 Contact arrangement: A:1A; B:1B

### Contact Data

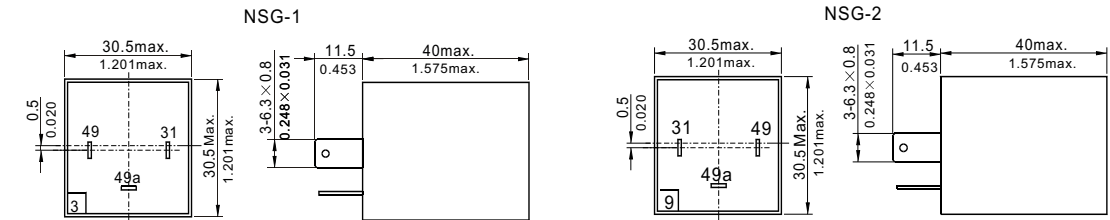
Rated voltage	12VDC,24VDC
Operating voltage drop	<0.4VDC at rated turn signal load
Device voltage drop	<0.45VDC at rated hazard signal load
Initial turn-on	50ms
Sound pressure level	70dB
Upper limit temperature for the coil	125°C

### Characteristics

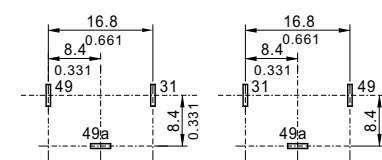
Contact Arrangement	1A (SPSTNO)		
Max output power	98W		
Shock Resistance	200m/s <sup>2</sup> 10ms Half sine wave pulse	IEC 68-2-27 Test Ea	
Vibration Resistance	10Hz~40Hz Double amplitude 1.27mm	IEC 68-2-6 Test Fc	
	40Hz~70Hz 50m/s <sup>2</sup>		
	70Hz~100Hz Double amplitude 0.5mm	IEC 68-2-6 Test Fc	
Drop test	Capable of meeting specifications		
	1m drop onto concrete	IEC 68-2-32 Test Ed method 1	
Contact data: Load requirements at 12.8VDC	Loads	2Lamp system	3Lamp system
	Turn signal mode:Rated loads Outage loads 2×21W	2×21W +1×5W +1×1.2W 1×21W +1×5W +1×1.2W	3×21W +1×5W +1×1.2W 2×21W +1×5W +1×1.2W
	Hazard mode: Rated loads	4×21W +2×5W +2×1.2W	6×21W +2×5W +2×1.2W
Ambient temperature	-40°C~70°C		
Relative humidity	20%~50% at 23°C		
Mass	35g Approx		

### Dimensions

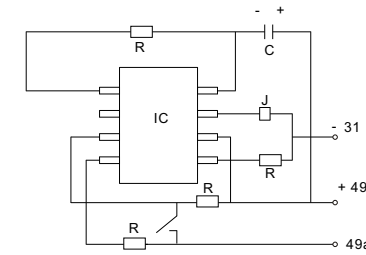
mm /inch



Dimensions



Mounting (Bottom view)



Wiring diagram

NOTES 1).Dimensions are in millimeters.  
2).Inch equivalents are given for general information only.