

# NSG-3



30×30×40

### Features

- Stable electronic timing.
- Wide operating voltage and temperature range.
- Suitable for flash light during car turning.

### Ordering Information

**NSG-3 A Z**  
 1 2 3

1 Part number: NSG-3  
 2 Contact arrangement: A:1A

3 Enclosure: Z: Dust cover

### Contact Data

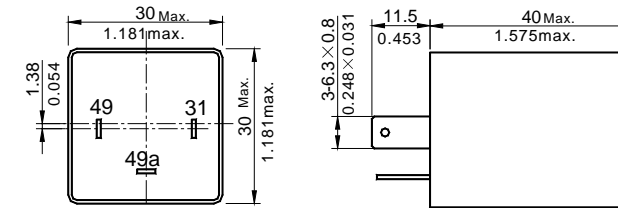
Rated voltage	12VDC
Operating voltage drop	<0.4VDC at rated turn signal load
Device voltage drop	<0.45VDC at rated hazard signal load
Initial turn-on	50ms
Sound pressure level	70dB
Upper limit temperature for the coil	125°C

### Characteristics

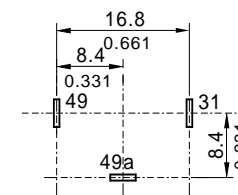
Contact Arrangement	1A (SPSTNO)	
Max output power	100W	
Shock Resistance	200m/s <sup>2</sup> 10ms Half sine wave pulse	IEC68-2-27 Test Ea
Vibration Resistance	10~40Hz Double amplitude 1.27mm	IEC68-2-6 Test Fc
	40~70Hz 50m/s <sup>2</sup>	
	70~100Hz Double amplitude 0.5mm	IEC68-2-6 Test Fc
	100~500Hz 100m/s <sup>2</sup>	
Drop test	Capable of meeting specifications 1m drop onto concrete IEC68-2-32 Test Ed method 1	
Contact data: Load requirements at 12.8VDC	Loads	2Lamp system
	Turn signal mode:Rated loads Outage loads 2×21W	2×21W +1×5W +1×1.2W 1×21W +1×5W +1×1.2W
	Hazard mode: Rated loads	4×21W +2×5W +2×1.2W
Ambient temperature	-40~70°C	
Relative humidity	20~50% at23°C	
Mass	40gApprox	

### Dimensions

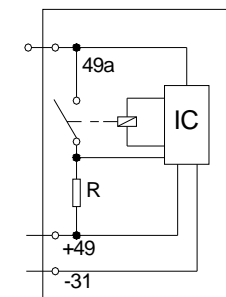
mm /inch



Dimensions



Mounting (Bottom view)



Wiring diagram

NOTES 1).Dimensions are in millimeters.  
 2).Inch equivalents are given for general information only.