

检测报告
Test Report

报告编号 ECL03J004805002E
Report No. ECL03J004805002E

第 1 页 共 8 页
Page 1 of 8

以下测试之样品及样品信息由申请者提供并确认
The following sample(s) and sample information was/were submitted and identified by/on the behalf of the client

样品名称 Sample Name	拨动杆 ACTUATOR
样品型号 Part No.	DS2 DS2
样品颜色 Color	白 white
材料名称 Material	POM POM
样品接收日期 Sample Received Date	2017.08.16 Aug. 16, 2017
样品检测日期 Testing Period	2017.08.16—2017.08.19 Aug. 16, 2017 to Aug. 19, 2017
检测要求 Test Requested	请参见下页。 Please refer to the following page(s).
检测依据/检测结果 Test Method/Test Result(s)	请参见下页。 Please refer to the following page(s).

主 检 蒋 磊 庆
Tested by

张 琳
Approved by

张琳

授权签字人 Approved Signatory

审 核 陈 沙
Reviewed by

日 期 2017.08.19
Date

No. R138204638

宁波市华测检测技术有限公司
Inspection & Testing Services
Centre Testing International (Ningbo) Co., Ltd. 1-2F, Eastern Factory, No.76, Jinghua Road, High-Tech Zone, Ningbo, Zhejiang, China
宁波高新区菁华路76号厂区东首第一、二层

检测报告 Test Report

报告编号 ECL03J004805002E
Report No. ECL03J004805002E

第 2 页 共 8 页
Page 2 of 8

结论 Conclusion

测试样品 Tested Sample	依据指令 According to directive	结果 Result
提交样品 Submitted Sample	2011/65/EU	符合 Pass

符合表示检测结果满足欧盟RoHS指令2011/65/EU要求的限值。

Pass means that the results shown on the report comply with the limits set by RoHS Directive 2011/65/EU.

检测报告 Test Report

报告编号 ECL03J004805002E
Report No. ECL03J004805002E

第 3 页 共 8 页
Page 3 of 8

检测要求

根据客户要求，对所提交样品中的铅(Pb)，镉(Cd)，汞(Hg)，六价铬(Cr(VI))，多溴联苯(PBBs)，多溴二苯醚(PBDEs)进行测试。

Test Requested

As specified by client, to test Lead (Pb), Cadmium (Cd), Mercury (Hg), Hexavalent Chromium(Cr(VI)), Polybrominated Biphenyls(PBBs), Polybrominated Diphenyl Ethers(PBDEs) in the submitted sample(s).

检测依据 Test Method

测试项目 Test Item(s)	测试方法 Test Method	测试仪器 Measured Equipment(s)
铅(Pb) Lead (Pb)	IEC 62321-5: 2013 Ed. 1.0	ICP-OES
镉(Cd) Cadmium (Cd)	IEC 62321-5: 2013 Ed. 1.0	ICP-OES
汞(Hg) Mercury (Hg)	IEC 62321-4: 2013 Ed. 1.0	ICP-OES
六价铬(Cr(VI)) Hexavalent Chromium(Cr(VI))	IEC 62321-7-2: 2017和/或IEC 62321-5: 2013 Ed. 1.0测试总铬含量 IEC 62321-7-2:2017 and/or determination of Total Chromium by IEC 62321-5:2013 Ed.1.0	UV-Vis/ICP-OES
多溴联苯(PBBs) Polybrominated Biphenyls(PBBs)	IEC 62321-6: 2015	GC-MS
多溴二苯醚(PBDEs) Polybrominated Diphenyl Ethers(PBDEs)	IEC 62321-6: 2015	GC-MS

检测报告 Test Report

报告编号 ECL03J004805002E
Report No. ECL03J004805002E

第 4 页 共 8 页
Page 4 of 8

检测结果 Test Result(s)

测试项目 Tested Item(s)	结果 Result	方法检出限 MDL	限值 Limit
铅(Pb) Lead (Pb)	N.D.	2 mg/kg	1000 mg/kg
镉(Cd) Cadmium (Cd)	N.D.	2 mg/kg	100 mg/kg
汞(Hg) Mercury (Hg)	N.D.	2 mg/kg	1000 mg/kg
六价铬(Cr(VI)) Hexavalent Chromium (Cr(VI))	N.D.	8 mg/kg	1000 mg/kg

测试项目 Tested Item(s)	结果 Result	方法检出限 MDL	限值 Limit
多溴联苯(PBBs) Polybrominated Biphenyls(PBBs)			
一溴联苯 Monobromobiphenyl	N.D.	5 mg/kg	1000 mg/kg
二溴联苯 Dibromobiphenyl	N.D.	5 mg/kg	
三溴联苯 Tribromobiphenyl	N.D.	5 mg/kg	
四溴联苯 Tetrabromobiphenyl	N.D.	5 mg/kg	
五溴联苯 Pentabromobiphenyl	N.D.	5 mg/kg	
六溴联苯 Hexabromobiphenyl	N.D.	5 mg/kg	
七溴联苯 Heptabromobiphenyl	N.D.	5 mg/kg	
八溴联苯 Octabromobiphenyl	N.D.	5 mg/kg	
九溴联苯 Nonabromobiphenyl	N.D.	5 mg/kg	
十溴联苯 Decabromobiphenyl	N.D.	5 mg/kg	

检测报告 Test Report

报告编号 ECL03J004805002E
Report No. ECL03J004805002E

第 5 页 共 8 页
Page 5 of 8

测试项目 Tested Item(s)	结果 Result	方法检出限 MDL	限值 Limit
多溴二苯醚 (PBDEs) Polybrominated Diphenyl Ethers (PBDEs)			
一溴二苯醚 Monobromodiphenyl ether	N.D.	5 mg/kg	1000 mg/kg
二溴二苯醚 Dibromodiphenyl ether	N.D.	5 mg/kg	
三溴二苯醚 Tribromodiphenyl ether	N.D.	5 mg/kg	
四溴二苯醚 Tetrabromodiphenyl ether	N.D.	5 mg/kg	
五溴二苯醚 Pentabromodiphenyl ether	N.D.	5 mg/kg	
六溴二苯醚 Hexabromodiphenyl ether	N.D.	5 mg/kg	
七溴二苯醚 Heptabromodiphenyl ether	N.D.	5 mg/kg	
八溴二苯醚 Octabromodiphenyl ether	N.D.	5 mg/kg	
九溴二苯醚 Nonabromodiphenyl ether	N.D.	5 mg/kg	
十溴二苯醚 Decabromodiphenyl ether	N.D.	5 mg/kg	

测试样品/部位描述 白色塑料
Tested Sample/Part Description White plastic

备注: 对于检测铅, 镉, 汞之样品已完全溶解。
-N.D. = 未检出 (小于方法检出限)
-mg/kg = ppm = 百万分之一

Remark: The sample(s) had been dissolved totally tested for Lead, Cadmium, Mercury.
-MDL = Method Detection Limit
-N.D. = Not Detected (<MDL)
-mg/kg = ppm = parts per million

检测报告 Test Report

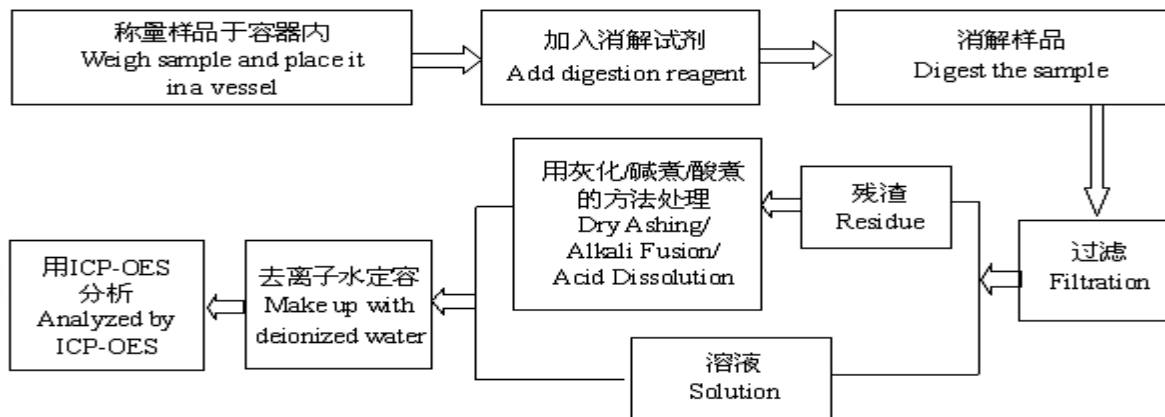
报告编号 ECL03J004805002E
Report No. ECL03J004805002E

第 6 页 共 8 页
Page 6 of 8

检测流程 Test Process

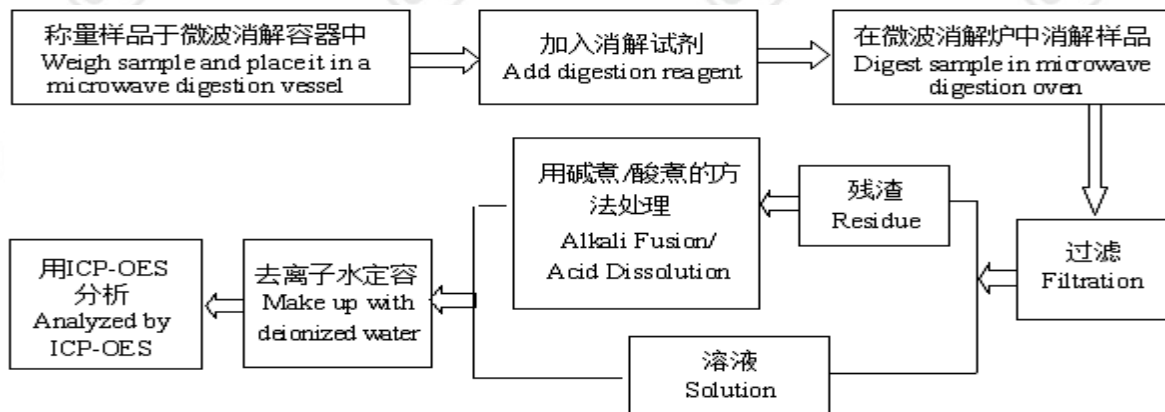
1. 铅(Pb), 镉(Cd), 铬(Cr)

Lead (Pb), Cadmium (Cd), Chromium (Cr)



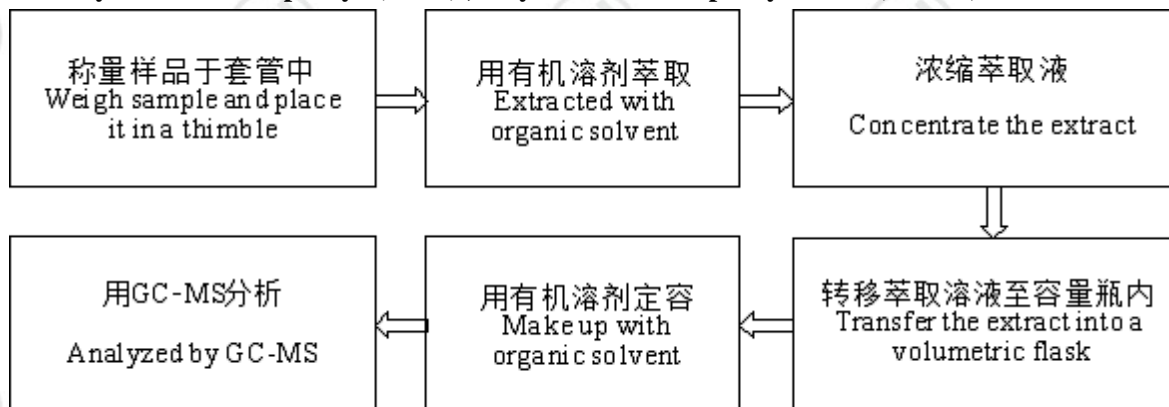
2. 汞(Hg)

Mercury (Hg)



3. 多溴联苯(PBBs), 多溴二苯醚(PBDEs)

Polybrominated Biphenyls(PBBs), Polybrominated Diphenyl Ethers(PBDEs)

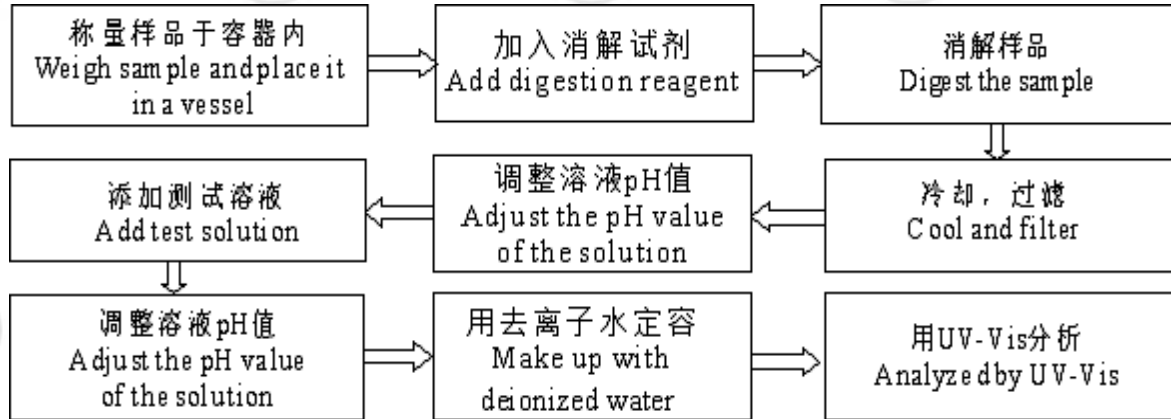


检测报告 Test Report

报告编号 ECL03J004805002E
Report No. ECL03J004805002E

第 7 页 共 8 页
Page 7 of 8

4. 六价铬(Cr(VI)) Hexavalent Chromium(Cr(VI))

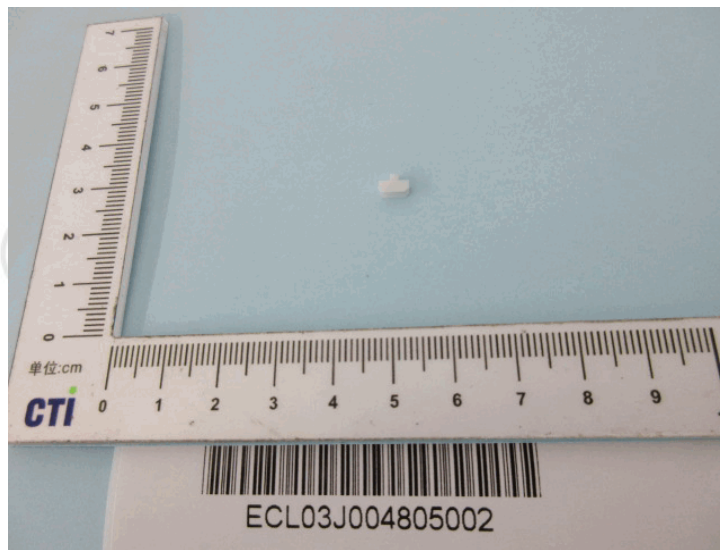


检测报告 Test Report

报告编号 ECL03J004805002E
Report No. ECL03J004805002E

第 8 页 共 8 页
Page 8 of 8

样品图片 Photo(s) of the sample(s)



报告结束
*** End of report ***

检测报告无批准人签字及加盖公司报告章无效，本报告检测结果仅对受测样品负责。未经CTI书面同意，不得部分复制本报告。

The test report is effective only with both signature and specialized stamp. The result(s) shown in this report refer only to the sample(s) tested. Without written approval of CTI, this report can't be reproduced except in full.