

Test Report

Report No. ECL01J072676029

Page 1 of 7

Applicant CYG WAYON CIRCUIT PROTECTION CO.,LTD

Address 1001 SHIWAN 7TH ROAD, SHANGHAI, 201207 P.R. CHINA

The following sample(s) and sample information was/were submitted and identified by/on the behalf of the client

Sample Name Epoxy

Sample Received Date Nov. 20, 2017

Testing Period Nov. 20, 2017 to Nov. 28, 2017

Test Requested

As specified by client, to test Lead (Pb), Cadmium (Cd), Mercury (Hg), Hexavalent Chromium(Cr(VI)), Polybrominated Biphenyls(PBBs), Polybrominated Diphenyl Ethers(PBDEs), Phthalates(DBP, BBP, DEHP, DIBP), Chlorine(Cl), Bromine(Br), Antimony(Sb), Beryllium(Be) in the submitted sample(s).

Test Method

Please refer to the following page(s).

Test Result(s)

Please refer to the following page(s).

Tested by

Liu Jie
Su Hongwei

Approved by

Su Hongwei

Senior Laboratory Manager

Centre Testing International Pinbiao(Shanghai) Co., Ltd.

Reviewed by

Taoying

Date

Nov. 28, 2017

No. R131279013

No.1996,Xinqinqiao Road, Pudong New District,Shanghai,China

Test Report

Report No. ECL01J072676029

Page 2 of 7

Test Method

Tested Item(s)	Test Method	Measured Equipment(s)
Lead(Pb)	IEC 62321-5:2013 Ed.1.0	ICP-OES
Cadmium(Cd)	IEC 62321-5:2013 Ed.1.0	ICP-OES
Mercury(Hg)	IEC 62321-4:2013 Ed.1.0	ICP-OES
Hexavalent Chromium(Cr(VI))	IEC 62321-7-2:2017 and/or determination of Total Chromium by IEC 62321-5:2013 Ed.1.0	UV-Vis/ICP-OES
Polybrominated Biphenyls(PBBs)	IEC 62321-6:2015	GC-MS
Polybrominated Diphenyl Ethers (PBDEs)	IEC 62321-6:2015	GC-MS
Phthalates(DBP, BBP, DEHP, DIBP)	IEC 62321-8:2017	GC-MS
Chlorine (Cl)	Refer to EN 14582:2016	IC
Bromine (Br)	Refer to EN 14582:2016	IC
Antimony(Sb)	Refer to US EPA 3052:1996 &US EPA 6010D:2014	ICP-OES
Beryllium(Be)	Refer to US EPA 3052:1996 &US EPA 6010D:2014	ICP-OES

Test Report

Report No. ECL01J072676029

Page 3 of 7

Test Result(s)

Tested Item(s)	Result	MDL
Lead (Pb)	N.D.	2 mg/kg
Cadmium (Cd)	N.D.	2 mg/kg
Mercury (Hg)	N.D.	2 mg/kg
Hexavalent Chromium (Cr(VI))	N.D.	8 mg/kg

Tested Item(s)	Result	MDL
Polybrominated Biphenyls(PBBs)		
Monobromobiphenyl	N.D.	5 mg/kg
Dibromobiphenyl	N.D.	5 mg/kg
Tribromobiphenyl	N.D.	5 mg/kg
Tetrabromobiphenyl	N.D.	5 mg/kg
Pentabromobiphenyl	N.D.	5 mg/kg
Hexabromobiphenyl	N.D.	5 mg/kg
Heptabromobiphenyl	N.D.	5 mg/kg
Octabromobiphenyl	N.D.	5 mg/kg
Nonabromobiphenyl	N.D.	5 mg/kg
Decabromobiphenyl	N.D.	5 mg/kg

Tested Item(s)	Result	MDL
Polybrominated Diphenyl Ethers(PBDEs)		
Monobromodiphenyl ether	N.D.	5 mg/kg
Dibromodiphenyl ether	N.D.	5 mg/kg
Tribromodiphenyl ether	N.D.	5 mg/kg
Tetrabromodiphenyl ether	N.D.	5 mg/kg
Pentabromodiphenyl ether	N.D.	5 mg/kg
Hexabromodiphenyl ether	N.D.	5 mg/kg
Heptabromodiphenyl ether	N.D.	5 mg/kg
Octabromodiphenyl ether	N.D.	5 mg/kg
Nonabromodiphenyl ether	N.D.	5 mg/kg
Decabromodiphenyl ether	N.D.	5 mg/kg

Test Report

Report No. ECL01J072676029

Page 4 of 7

Tested Item(s)	Result	MDL
Phthalates		
Dibutyl phthalate(DBP) CAS#:84-74-2	N.D.	50 mg/kg
Butylbenzyl phthalate(BBP) CAS#:85-68-7	N.D.	50 mg/kg
Di-2-ethylhexyl phthalate(DEHP) CAS#:117-81-7	N.D.	50 mg/kg
Diisobutyl phthalate(DIBP) CAS#:84-69-5	N.D.	50 mg/kg

Tested Item(s)	Result	MDL
Halogen		
Chlorine (Cl)	599 mg/kg	10mg/kg
Bromine (Br)	N.D.	10mg/kg

Tested Item(s)	Result	MDL
Antimony(Sb)	N.D.	5 mg/kg
Beryllium(Be)	N.D.	10 mg/kg

Tested Sample/Part Description Yellow powder

Remark: The sample(s) had been dissolved totally tested for Lead, Cadmium, Mercury, Antimony, Beryllium.

-MDL = Method Detection Limit

-N.D. = Not Detected (<MDL)

-mg/kg = ppm = parts per million

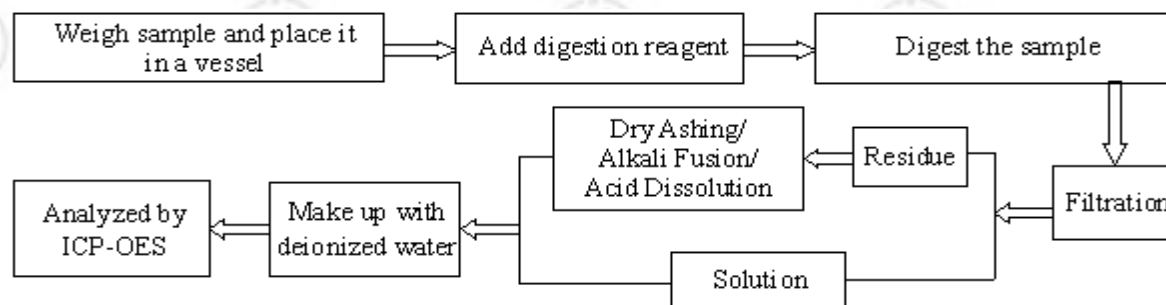
Test Report

Report No. ECL01J072676029

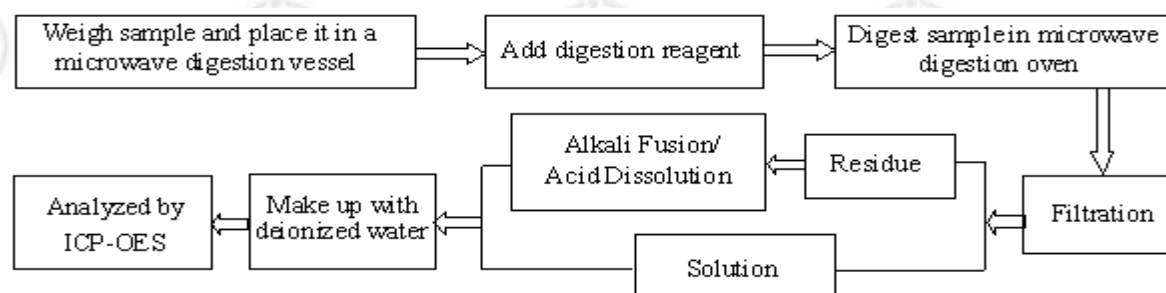
Page 5 of 7

Test Process

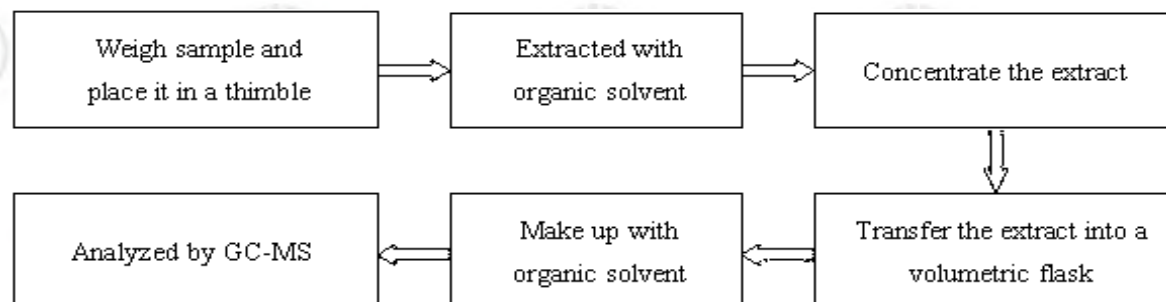
1. Lead (Pb), Cadmium (Cd), Chromium (Cr)



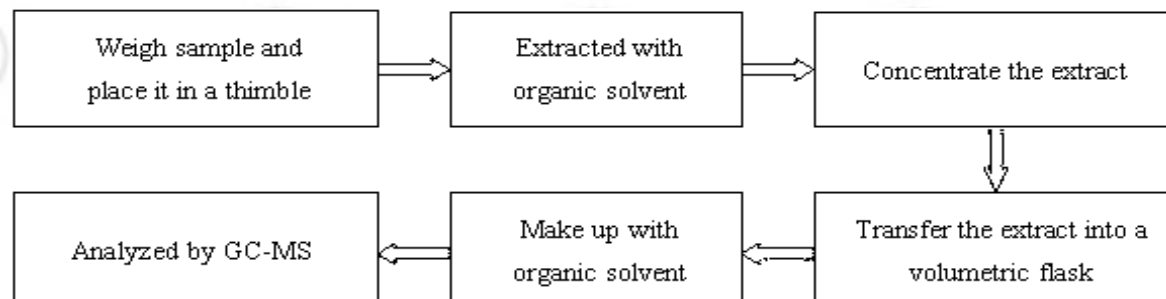
2. Mercury (Hg)



3. Polybrominated Biphenyls(PBBs) , Polybrominated Diphenyl Ethers(PBDEs)



4. Phthalates(DBP, BBP, DEHP, DIBP)

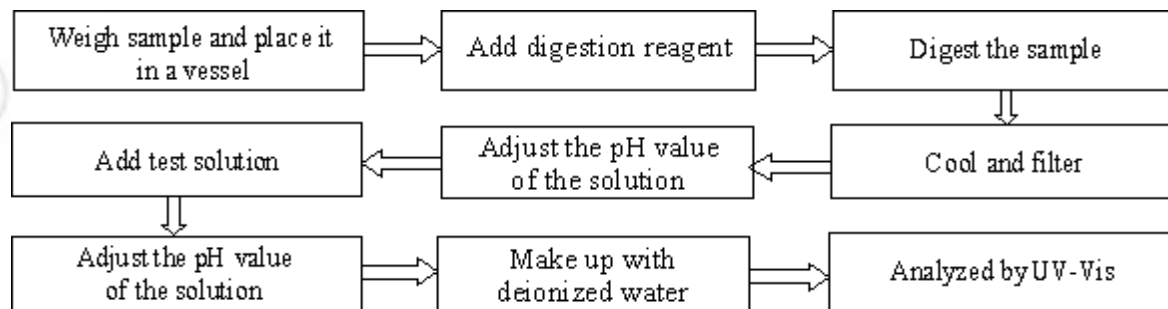


Test Report

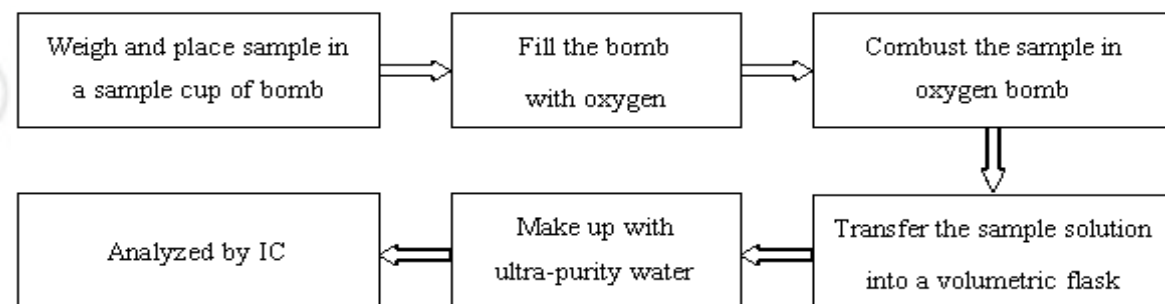
Report No. ECL01J072676029

Page 6 of 7

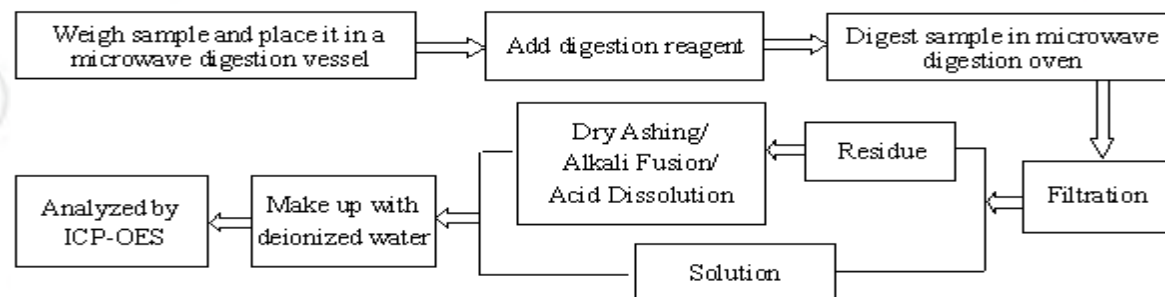
5. Hexavalent Chromium(Cr(VI))



6. Bromine(Br), Chlorine(Cl)



7. Antimony(Sb), Beryllium(Be)

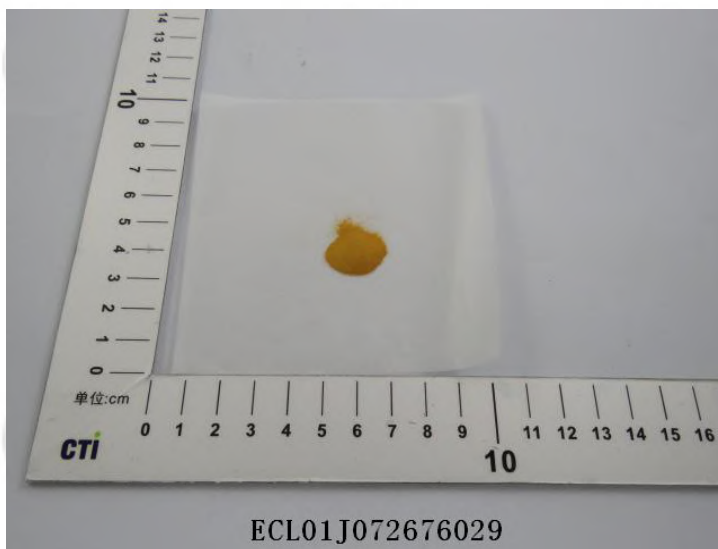


Test Report

Report No. ECL01J072676029

Page 7 of 7

Photo(s) of the sample(s)



*** End of report ***

The test report is effective only with both signature and specialized stamp. The result(s) shown in this report refer only to the sample(s) tested. Without written approval of CTI, this report can't be reproduced except in full.